

Experiential Routine

Enhancing experience within daily transitional spaces

Amit Sadik
M.Arch Final Project | 2021

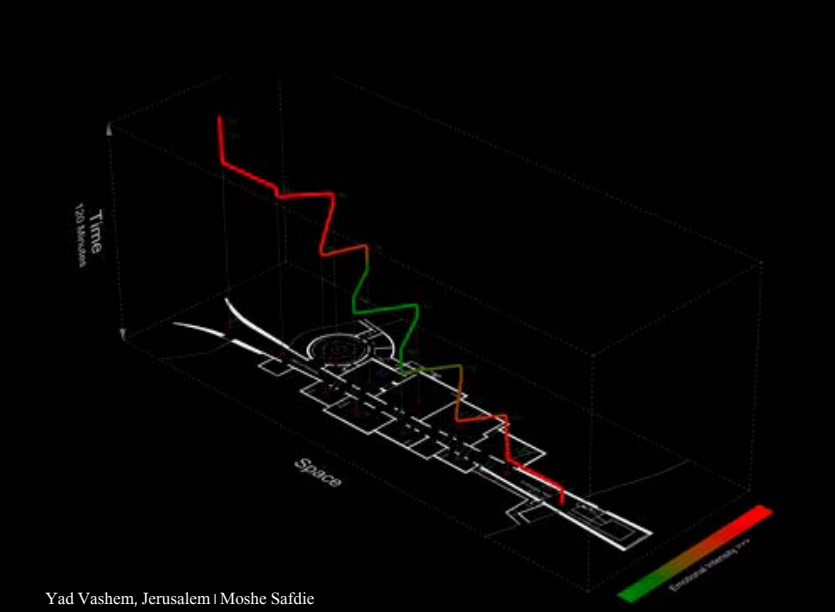
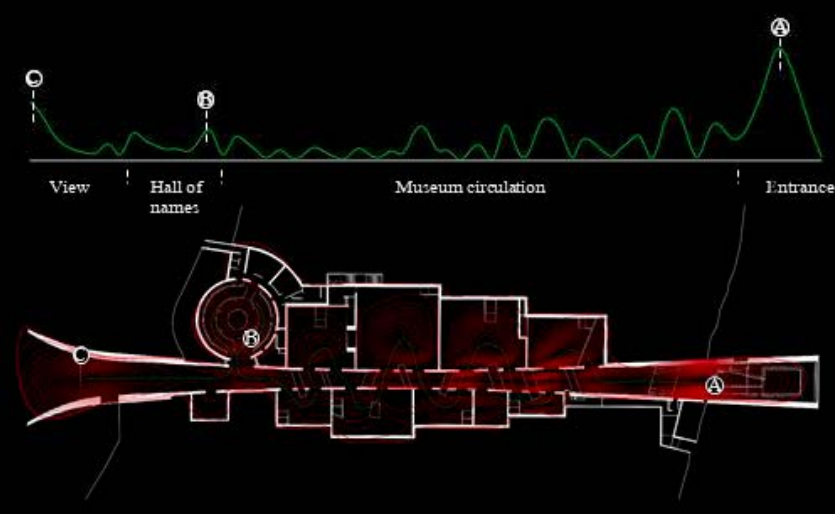
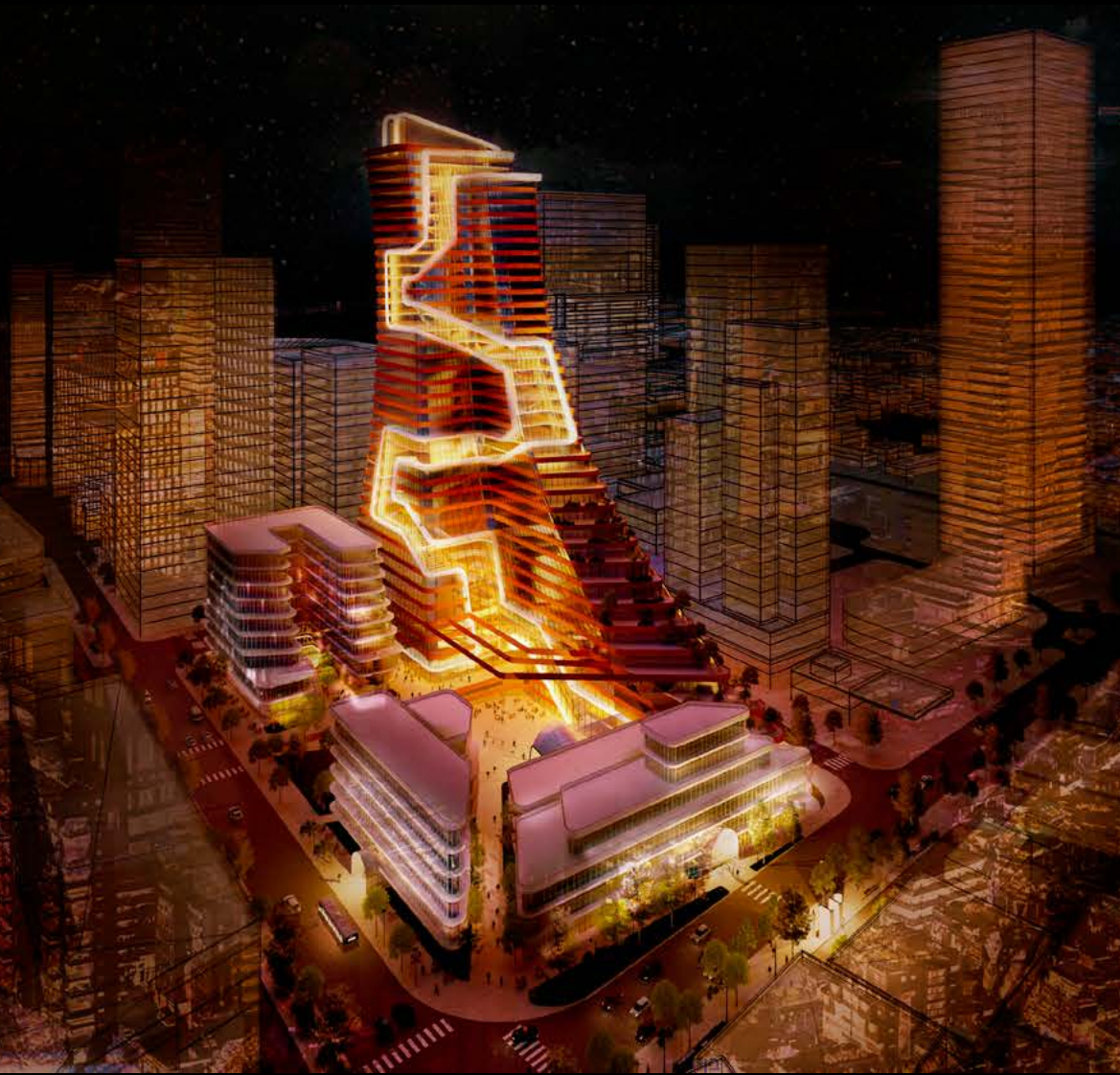
Where can we find built spaces that evoke feelings of curiosity, novelty, or even euphoria? Museums, places of worship, and cultural sites create these memorable multi-sensorial experiences; yet rarely can we say the same for our everyday environment.

A commonality amongst these extremely experiential sites is the idea of a curated path, a design strategy that can be applied to how we move in a typical everyday commute. Focusing on the potential of circulation, the project seeks to enhance experience in our daily spaces.

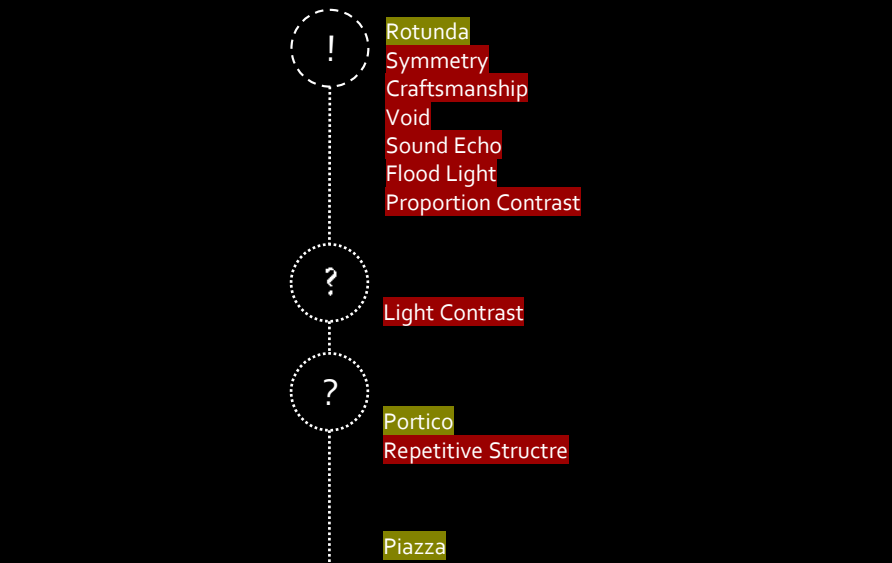
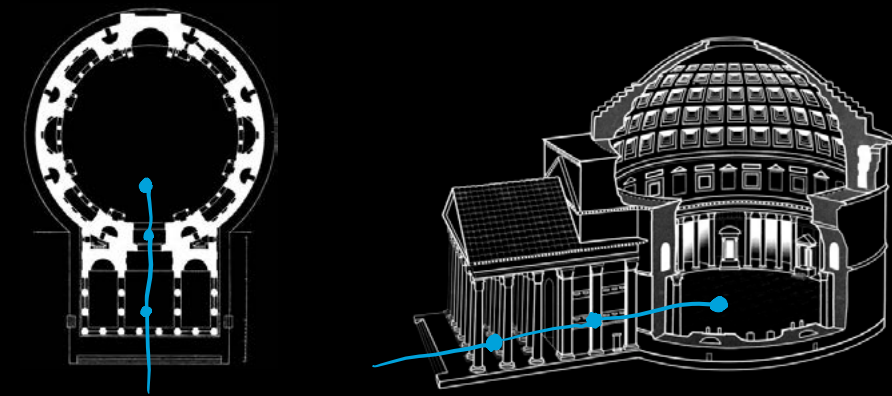
By relying on design principles that prioritize change, the project reimagines the circulation of a commute to

break the monotony of a daily routine. The strategies include - the option to choose by multiplying routes, integrating programs that encourage interaction, and implementing time-based elements that evolve throughout the day.

The Ben Gurion planned light rail station in Bnei Brak is expected to receive 30,000 commuters a day who will disperse to the immediate surrounding offices, residential, and commercial buildings. This site becomes a case study for incorporating change-based design principles where circulation acts as the anchor for creating an experiential routine.

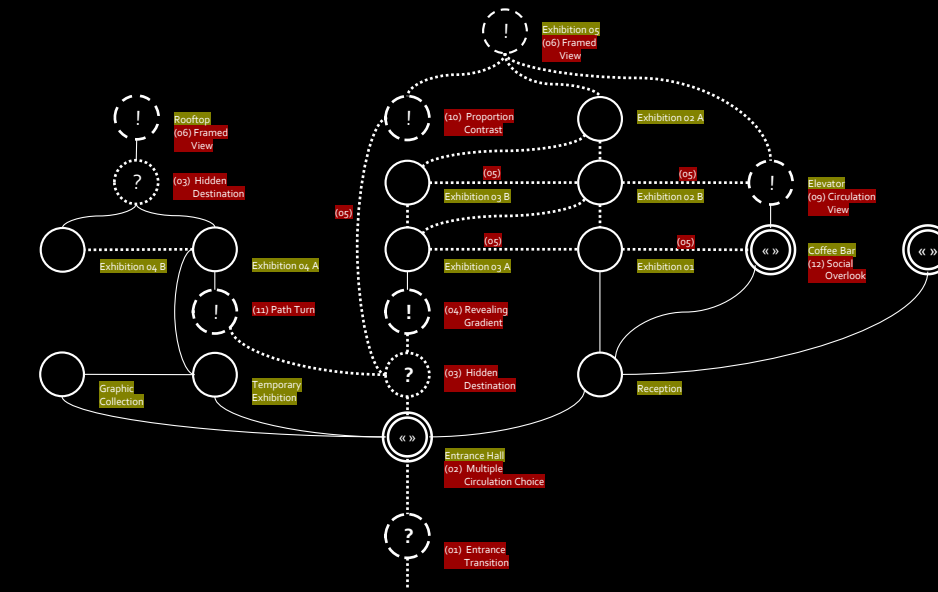
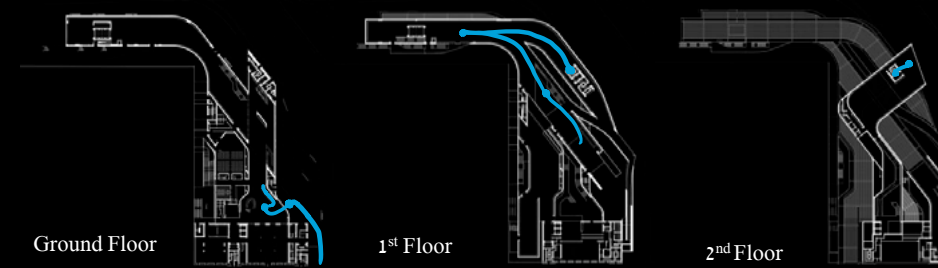


Yad Vashem, Jerusalem / Moshe Safdie



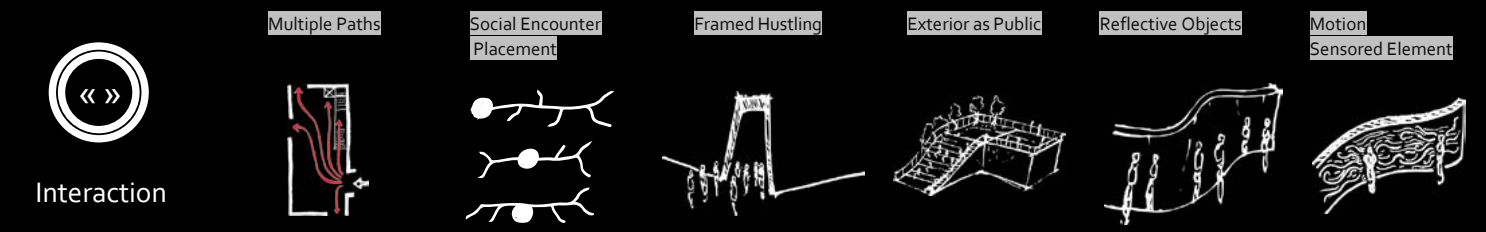
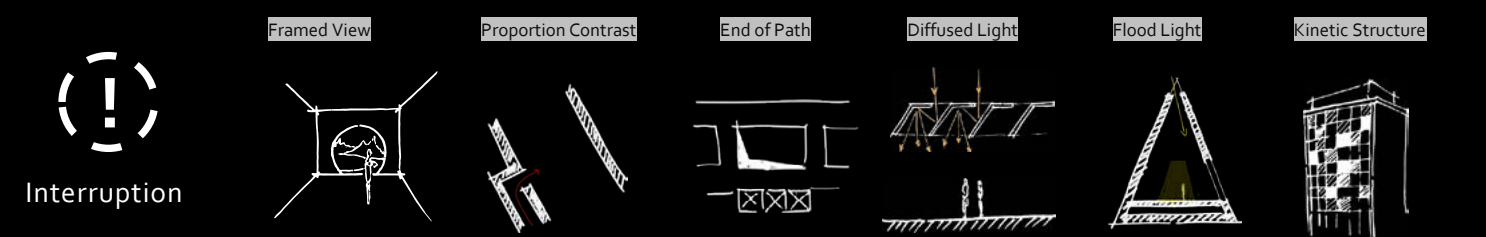
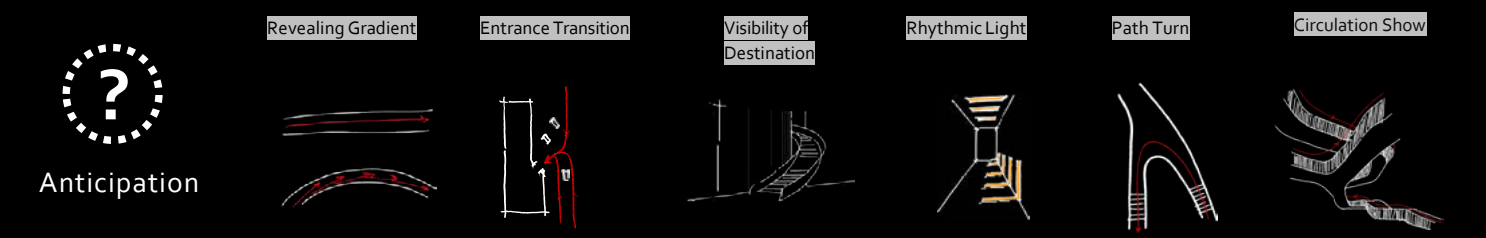
Pantheon, Rome

○ Program ? Anticipation ! Interruption ⦿ Interaction ● Current Position



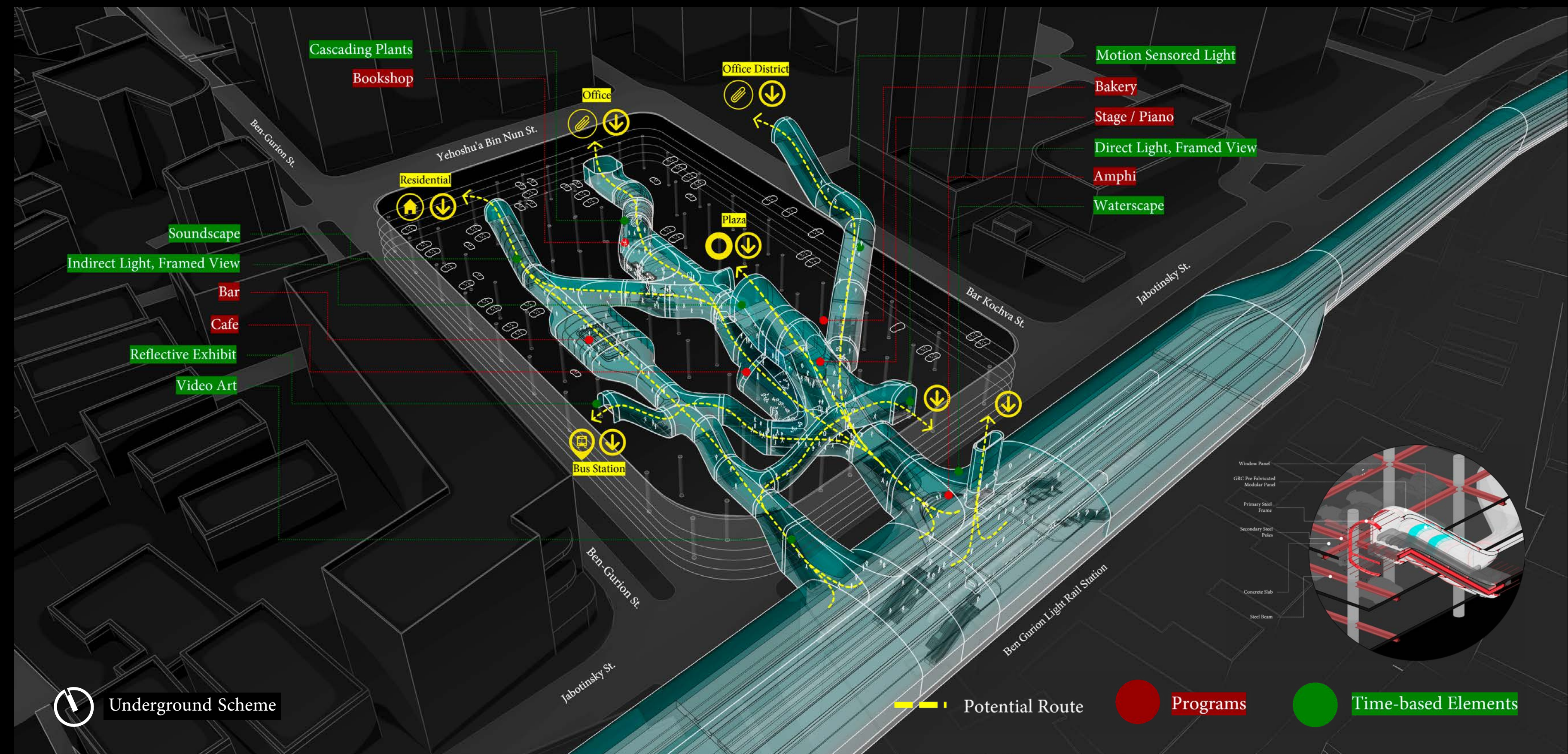
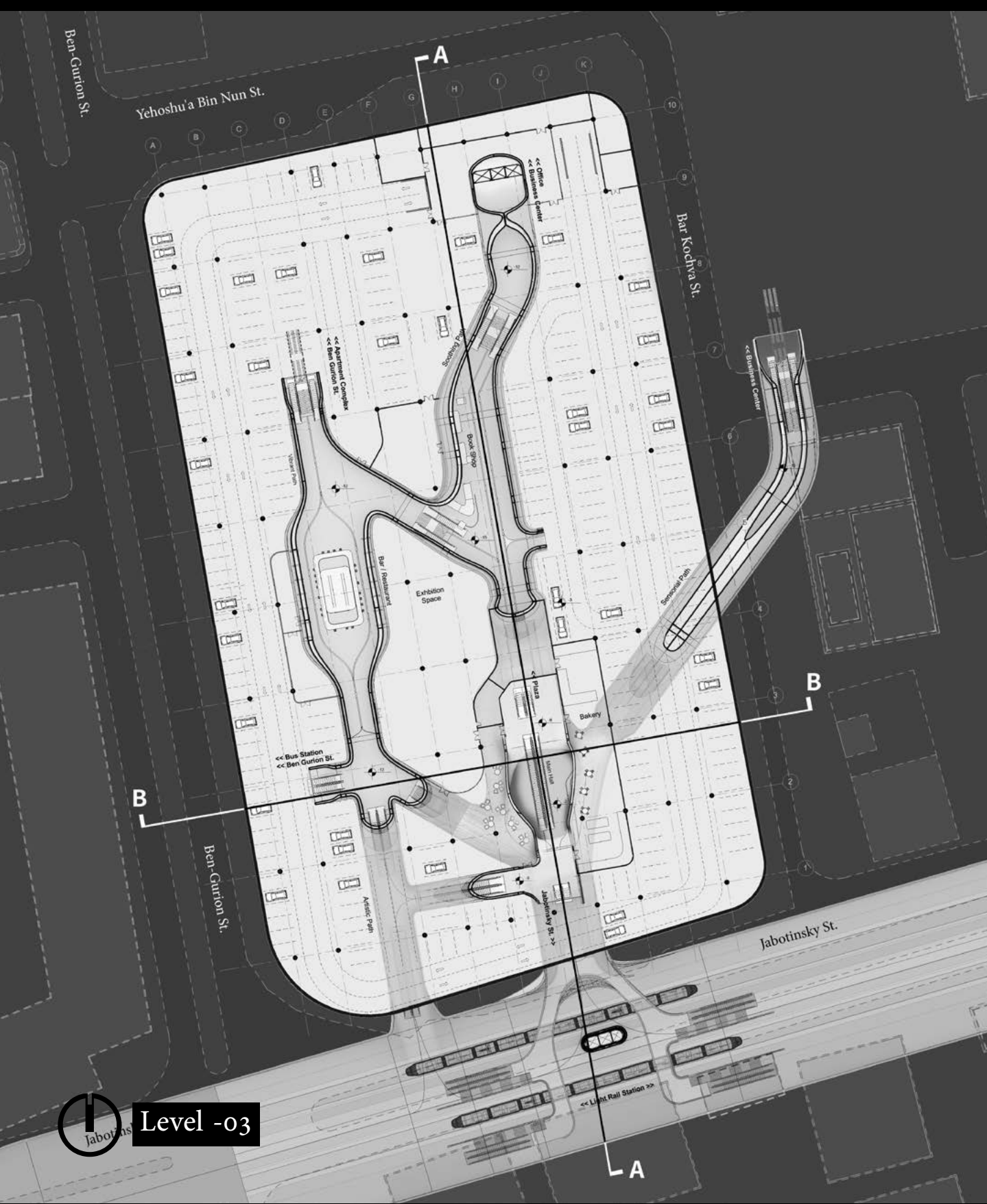
Maxii Musuem, Rome / Zaha Hadid

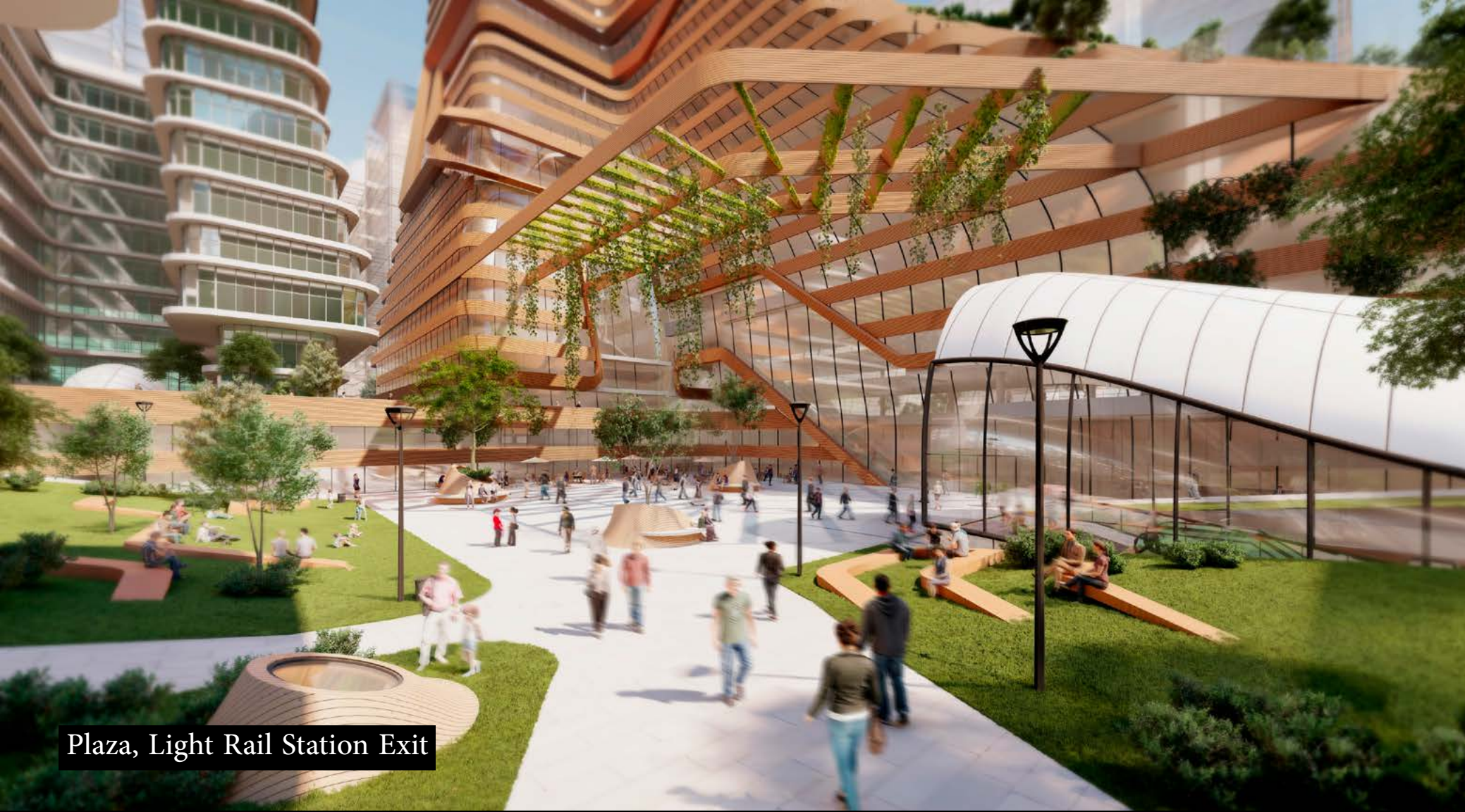
○ Program ? Anticipation ! Interruption ⦿ Interaction ● Current Position



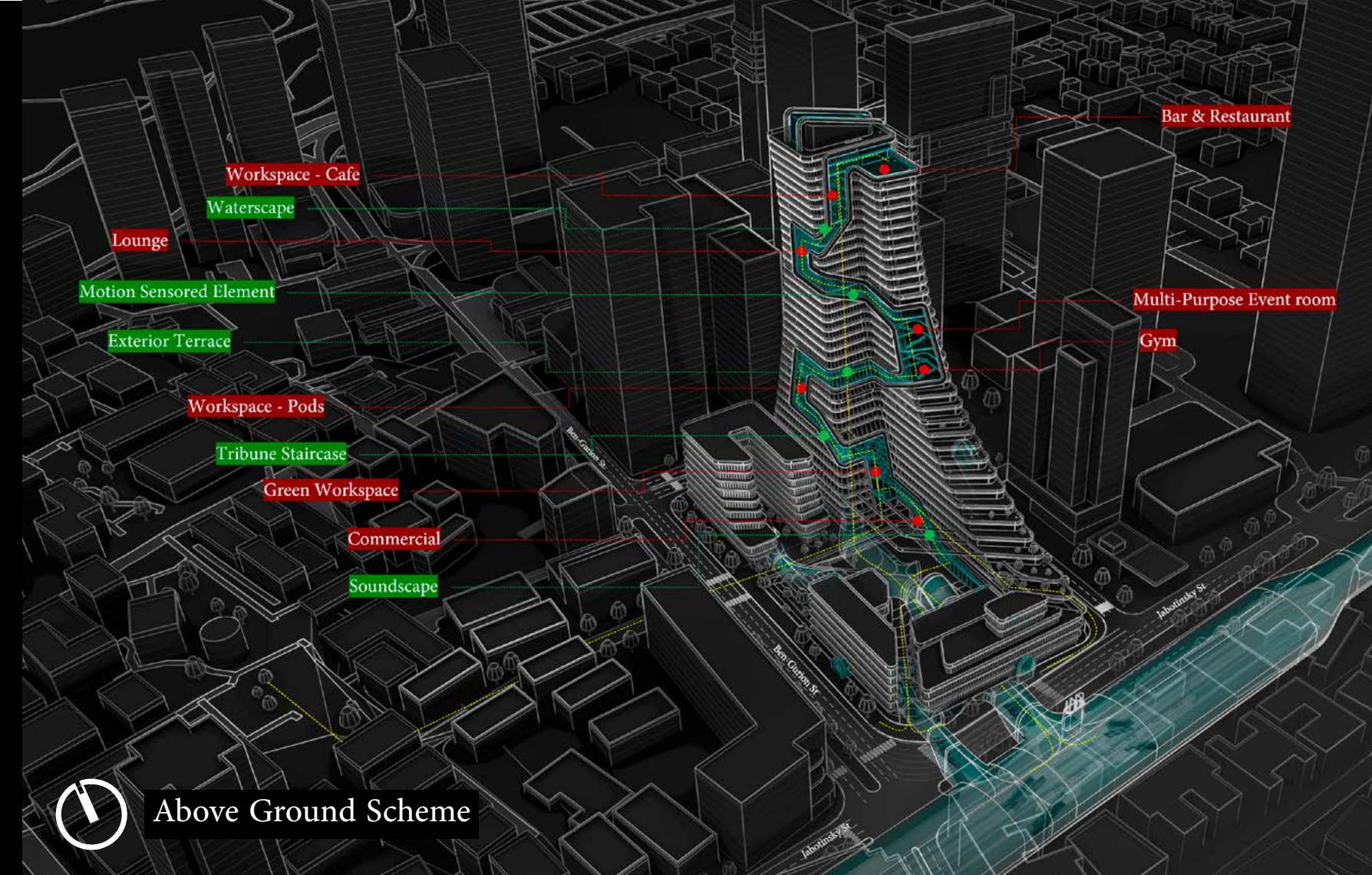
Experiential Patterns

Circulation & Movement Analysis

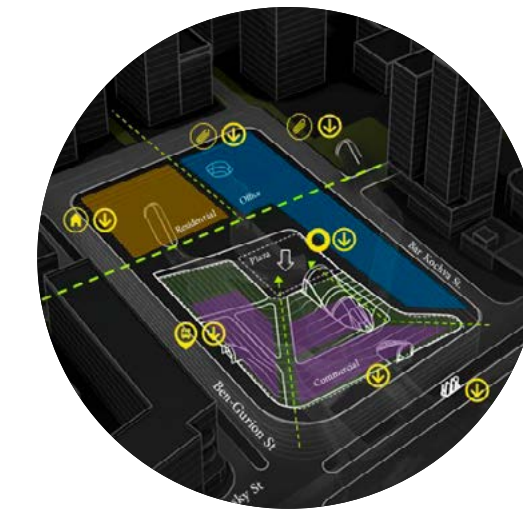




Plaza, Light Rail Station Exit



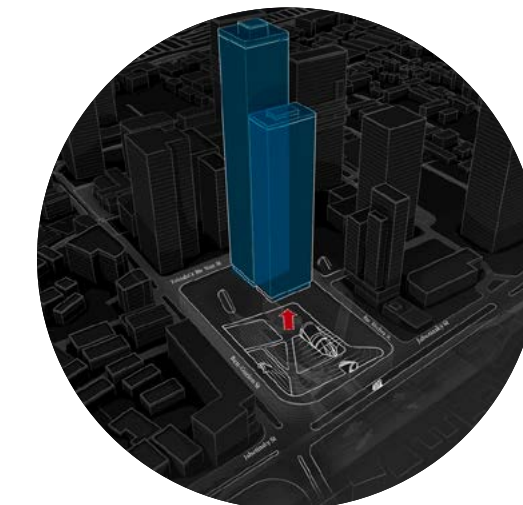
Above Ground Scheme



Programs

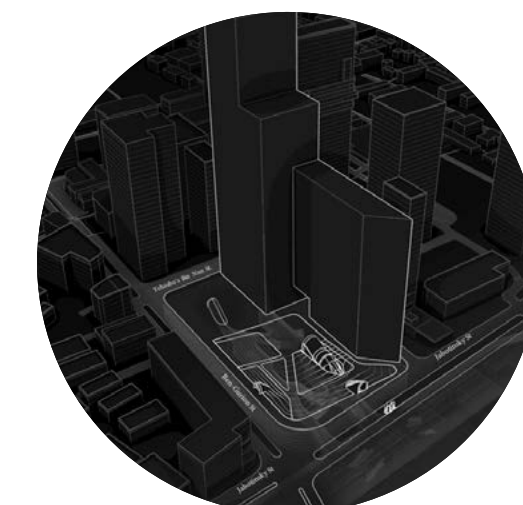
Proposed location of programs and underground exits.

- Commercial
- Residential
- Office



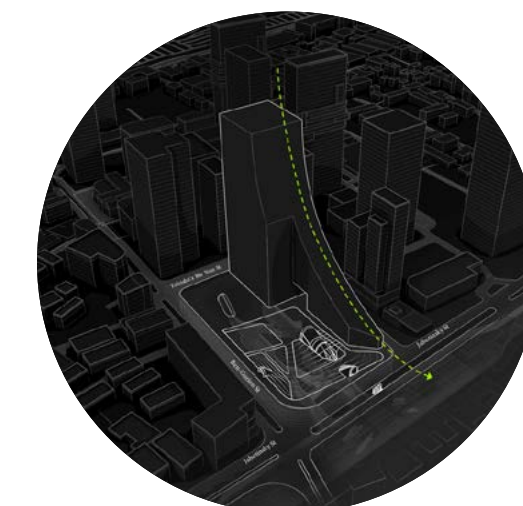
Relocation

Relocation of the two office towers planned to be built in the site.



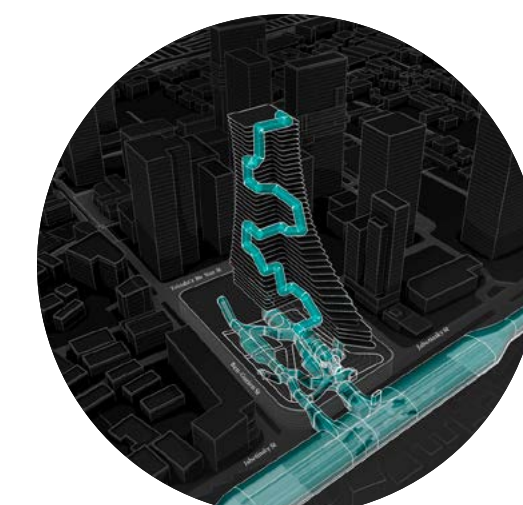
Additive Mass

Combining the masses in order to gain a larger office floor area and to define the central plaza.



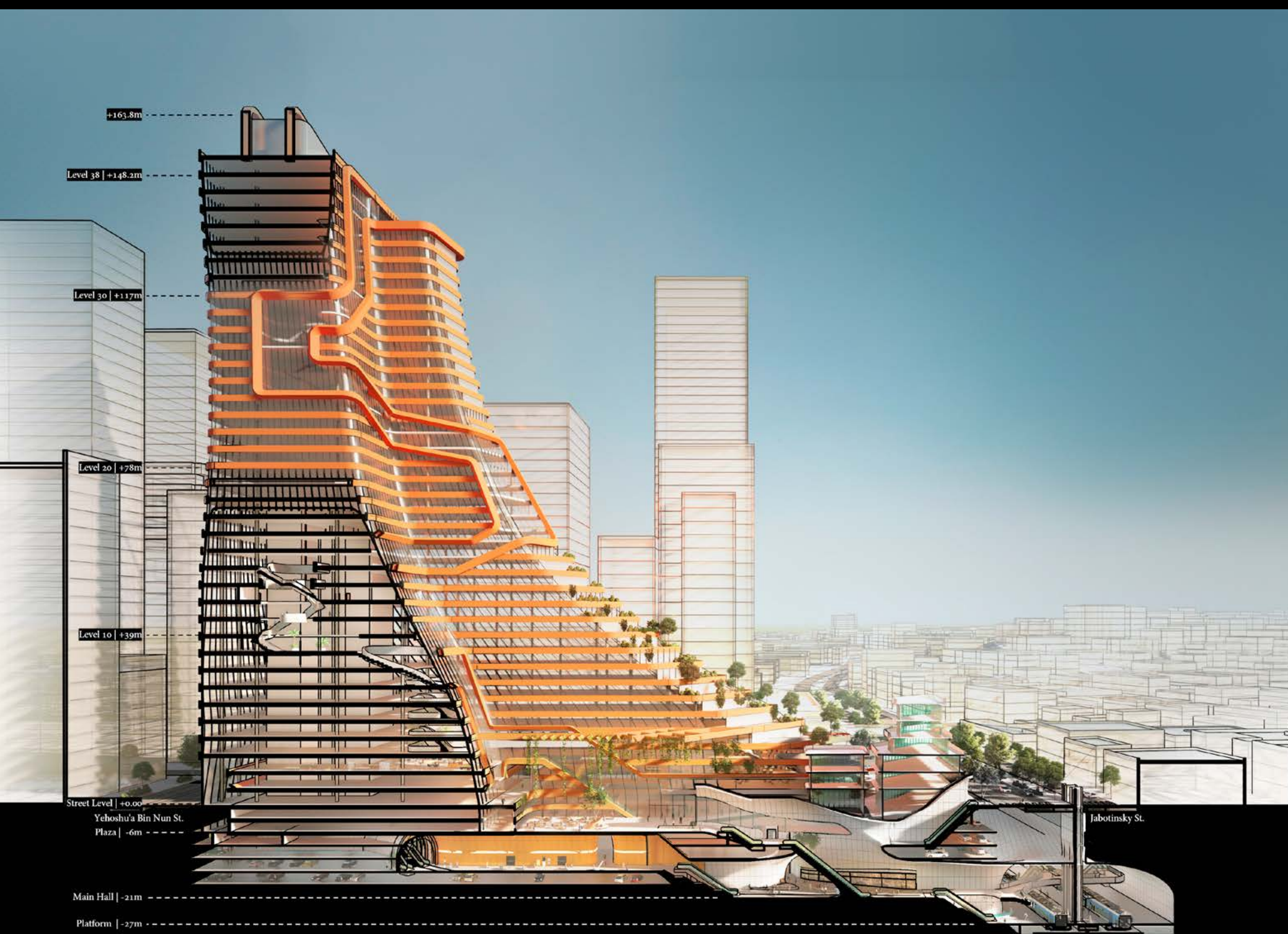
Subtractive Mass

Creating a gradual heightening from the low-rise buildings in the south to the high-rise towers in the north of the site. The terraces act as open work spaces and balconies for the office.



Slab Penetration

The pipe penetrates both the parking slabs and the office tower floors. This creates a connected path of semi-public atriums containing various programs and work environments.



Section AA



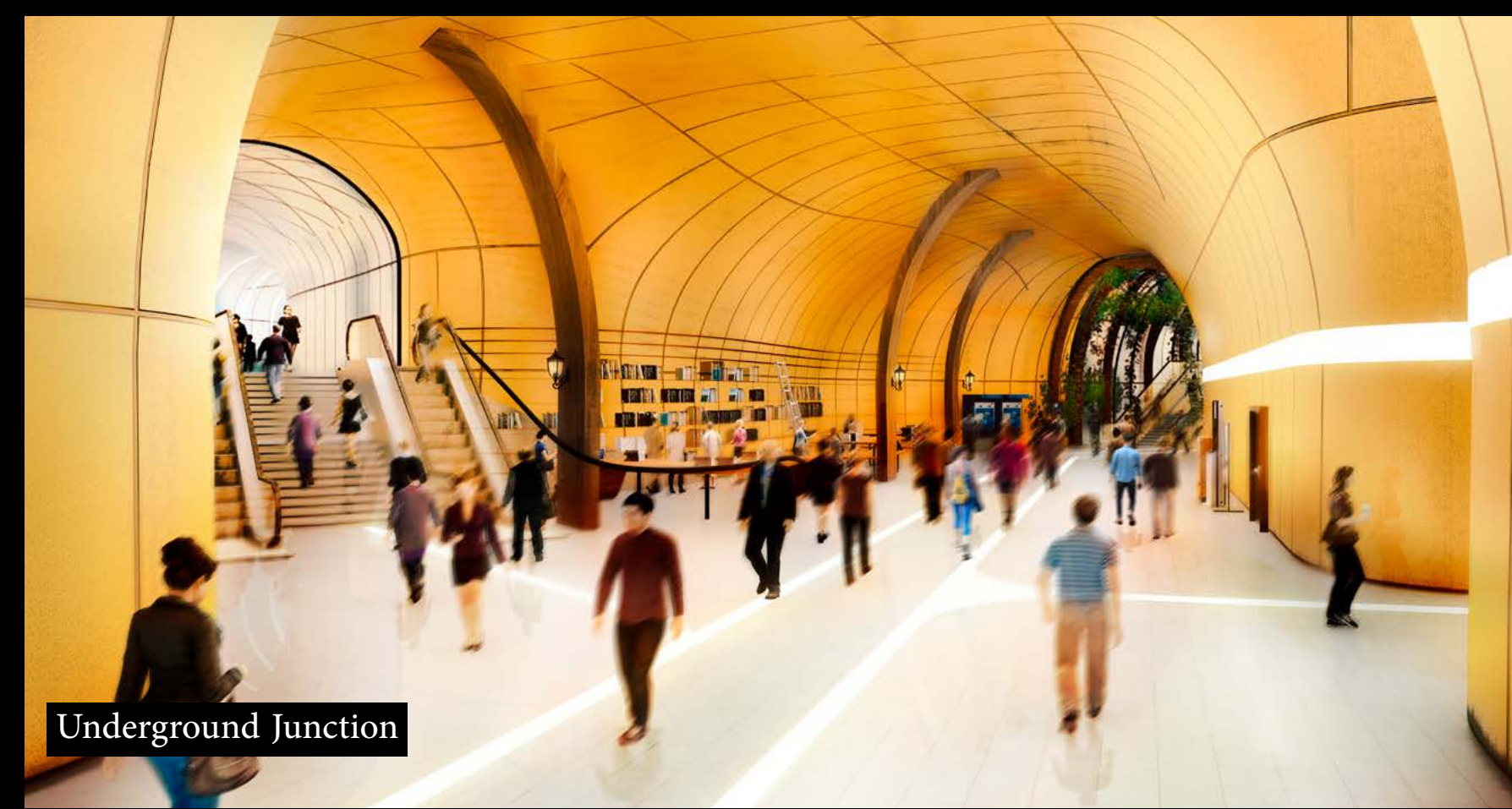
South Atrium



Level 11



Roof Plan



Underground Junction