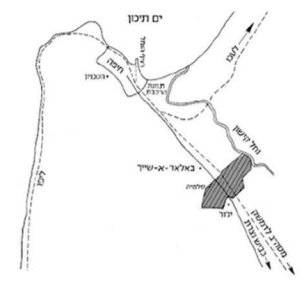


NESHER 2.0

the FACTORY

the CITY



חברת לים פורטלנד ישראלי
THE PORTLAND CEMENT COMPANY "NESHER" LIMITED



- Cement discovery 17 56
- Herzl's Zionist vision for an Israeli cement factory 19 02
- Establishment of the Portland Cement Syndicate of Israel 19 19
- Construction of the factory 19 25
- Exporting cement to neighboring countries 19 26
- The cessation of quarrying at 'Nesher' Quarry 19 40
- As a result of immigration from other countries, construction rates and cement demand increase 19 48
- Opening a new 'Nesher' factory in central Israel-Ramla 19 53
- The residents' fight for clean air and the installation of dust filters in all 19 76
- New record consumption of cement - the production line at the Ramla factory becomes the main one 19 90
- the furnaces shut down in haifas plant 20 06
- Entry of cement importers into the market and decline of Nesher's position as a monopoly 20 15
- The cement plant in Haifa has ceased production 20 20
- A residential neighborhood will replace the factory and quarry 20 22

Historic Timeline

19 25 The first workers' shacks neighborhood

19 30 The beginning of community life and the establishment of auxiliary farms

19 47 Factory workers' neighborhood 'Givat Nesher' established

19 48 the Palestine war

19 50 Absentee Property Law: 'Balad a-Sheikh' is inhabited by Jews and is called 'Tel Hanan' in the same way as 'Hawasa' to 'Ben-Dor'

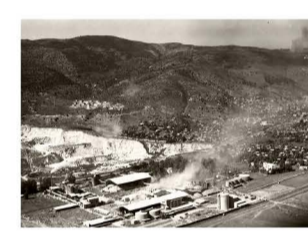
19 52 Tel Hanan, Ben Dor and Givat Nesher unite into a local council - Nesher

19 71 An attempt to rehabilitate the 'Nesher Quarry'. Project by the artist Yitzhak Danziger

19 90 The immigration from the Soviet Union and the establishment of Ramot Yitzhak neighborhood

19 95 Nesher officially becomes a city

20 22 The new master plan approved, which includes an addition of 10,500 units

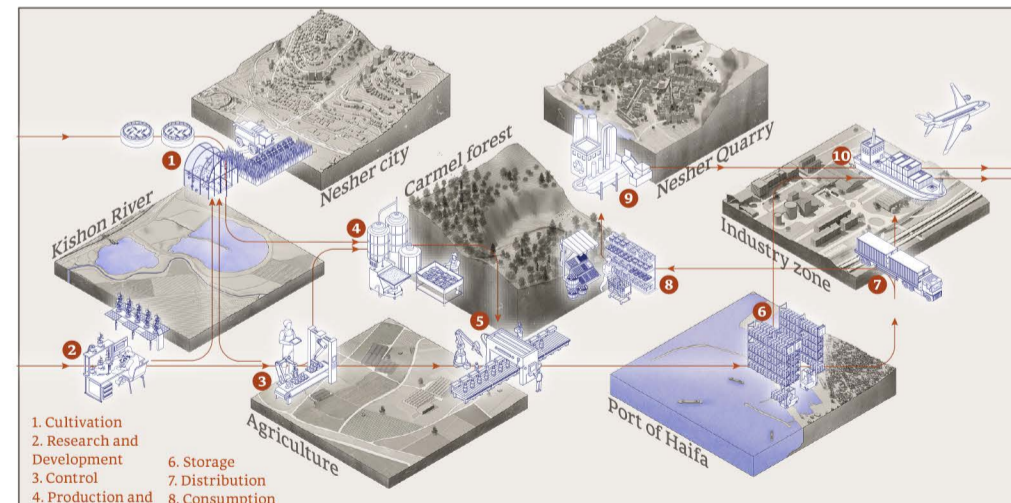


The renowned "Nesher" cement plant was the first cement plant in the entire Middle East and a cornerstone in the development of construction and infrastructure in Israel. As of 2000, the furnaces were shut down, quarrying stopped, and the area was left desolate. Due to urban renewal processes in the area, the remaining buildings are expected to be replaced by a new residential neighborhood without leaving any trace of the factory's story.

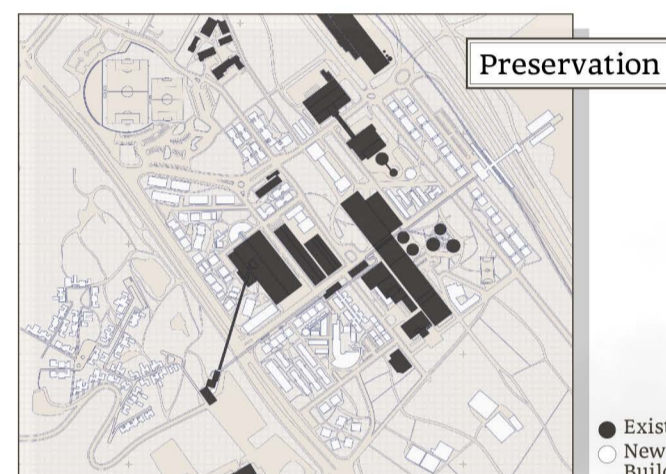
The proposed plan restores the area to its original industrial purpose, but as an integral part of the urban fabric and the existing natural-artificial environment due to the understanding that clean industry can be integrated into the city and can even contribute to its economic prosperity. The new district combines residences, academia and industry and draws architectural values from the historical factory in its design to emphasize the uniqueness of the place and its character.



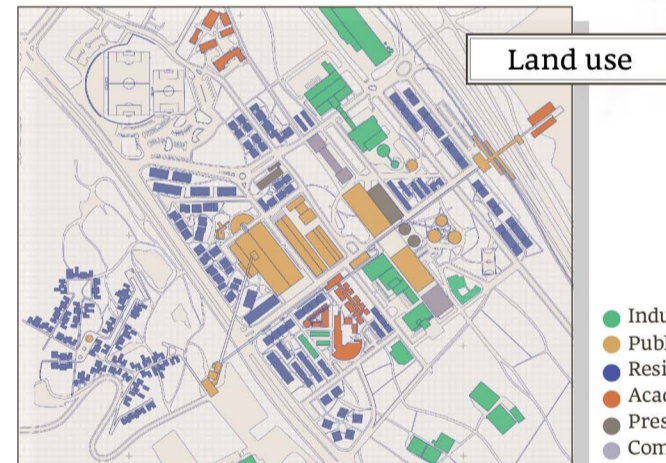
Site Plan



Concept



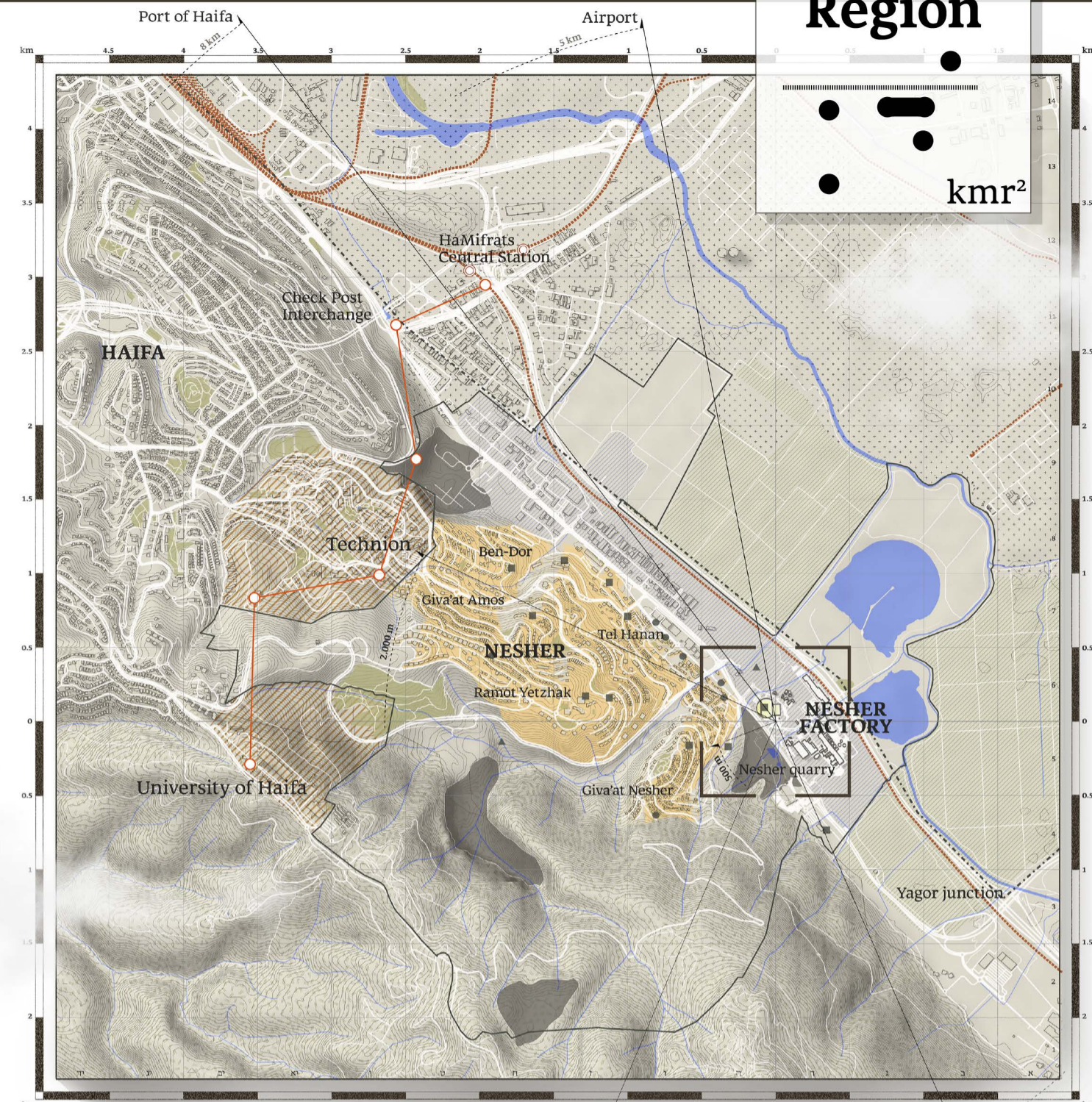
Preservation



Land use



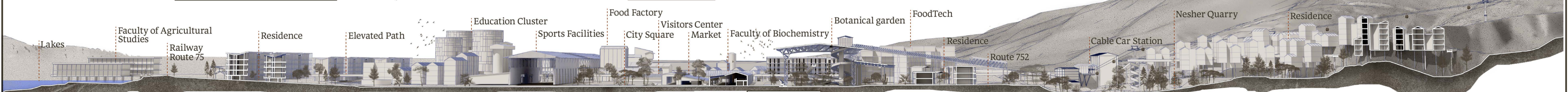
Green Space




Region

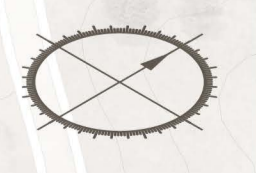
Location

- Nesher Factory
- Nesher Jurisdiction
- Residence
- Industry
- Academic institution
- Agricultural areas
- 'Carmel' forests
- Quarry
- Open public spaces
- Haifa's Industrial Zone
- National Outline Plan 30
- Railway
- Train Station
- Cable car line
- Cable car station
- Water
- Public institutions
- Education, sports & leisure
- Cemetery



Section

City

 mr²



- | | | | | | | | | | | |
|----------------------|----------------------|-----------------------|-----------------------------|------------------------------------|-----------------------|------------------------------|----------------------------|--------------|------------------------|------------------------|
| 1. Neshar stadium | 5. Public building | 9. High-tech industry | 13. Visitor center | 16. Edible garden | 18. Botanical garden | 20. Faculty Food Engineering | 23. Auditorium | 26. offices | 30. Route 752 | 34. Residential type C |
| 2. Science park | 6. Train station | 10. Food factory | 14. Faculty of Biochemistry | 17. Environmental Sciences faculty | 19. Cable car station | 21. Food-tech | 24. Academic staff offices | 27. lakes | 31. Agricultural area | 35. Residential type D |
| 3. Packaging factory | 7. Agronomy faculty | 11. Sports fields | 15. Urban market | | | 22. Library | 25. Preservation | 28. Route 75 | 32. Residential type A | 36. Residential type E |
| 4. Paper factory | 8. Education cluster | 12. Urban Park | | | | | | 29. Railway | 33. Residential type B | 37. Residential type F |

Top View

Food Factory

Plan

Section

Elevation

existing factory structure that changed its floor plan to a food production line. In the past this building was used as a cement station. The movement of the raw material to the finished product goes horizontally, separated from people of hygienic purposes. An elevated path runs inside the factory, through which reveal the production processes reveal to the residents.

Botanical Garden

Plan

Section

Elevation

The garden built inside an existing shed that was previously used as a limestone warehouse. A new circulation was added. The bridge that connected the quarry to the shed was preserved. The garden contains natural vegetation, spices, vegetables and a botanical garden. The garden is connected to the green areas and paths, so it has educational properties beyond tourism.

Residence A

Plan

Section

Elevation

Residential typology A consists of 2-5 buildings cluster, each with 2-6 floors. there are two-room apartments (55 sqm) and a three-room apartment (75 sqm). The buildings built on columns and connected by a constructive concrete bridge. Along the bridge there are observation points.

Academy

Plan

Section

Elevation

The building is part of a group of buildings for food studies such as food engineering, biotechnology and agronomy. The building contains 10 classrooms, 10 laboratories and administration building, the building is connected to the academic staff offices.

Cable Car Station

Plan

Section

Elevation

The cable car station is a new station in an existing building. The former building was used for limestone crush. The station connects between the neighborhood and Haifa by creating continues line from Technion station of the existing line.

Library

Plan

Section

Elevation

Library building contains quiet and shared learning spaces, computer rooms, open reading areas, and an auditorium with 620 seats. An external entrance leads to the auditors and shops are located on the ground floor.

Residence B

Plan

Section

Elevation

Typology B contains between 8-12 apartments. Four room apartments (about 90 sqm) and five room apartments (about 115 sqm). The ground floor is commercial. The apartments are built of light steel construction and have a sloped roof.

Education Cluster

Plan

Section

Elevation

The education cluster reuses three existing concrete silos and contains an elementary school, kindergartens and a after-school classes. The elementary school is designed vertically. Each floor contains two classrooms with a common space. management floors and playgrounds are connected by bridges to the classrooms.



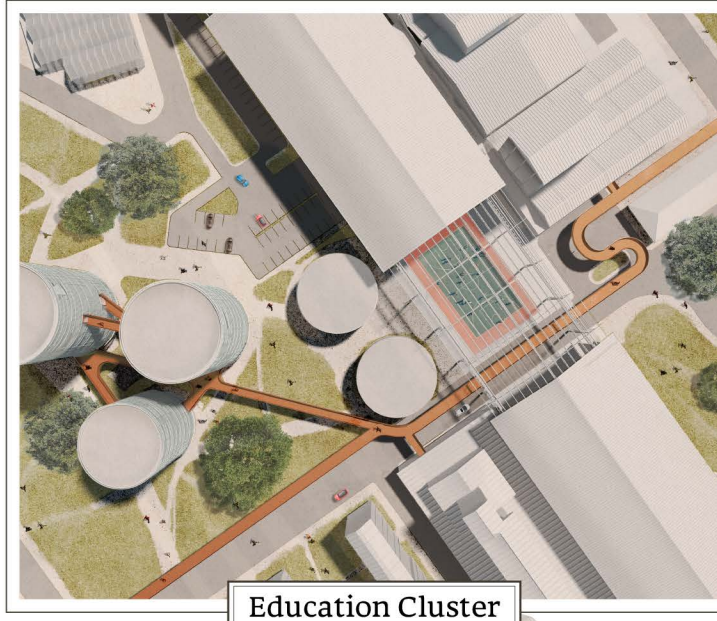
Botanical Gardens



Food Factory



Main Street



Education Cluster



View from the field



Nesher Quarry

