

**Continuous Urban Public
Sequenc;** Focusing on Two
Different Sites

STATE-SQUARE

HISTADRUT
LABOR
FEDERATION

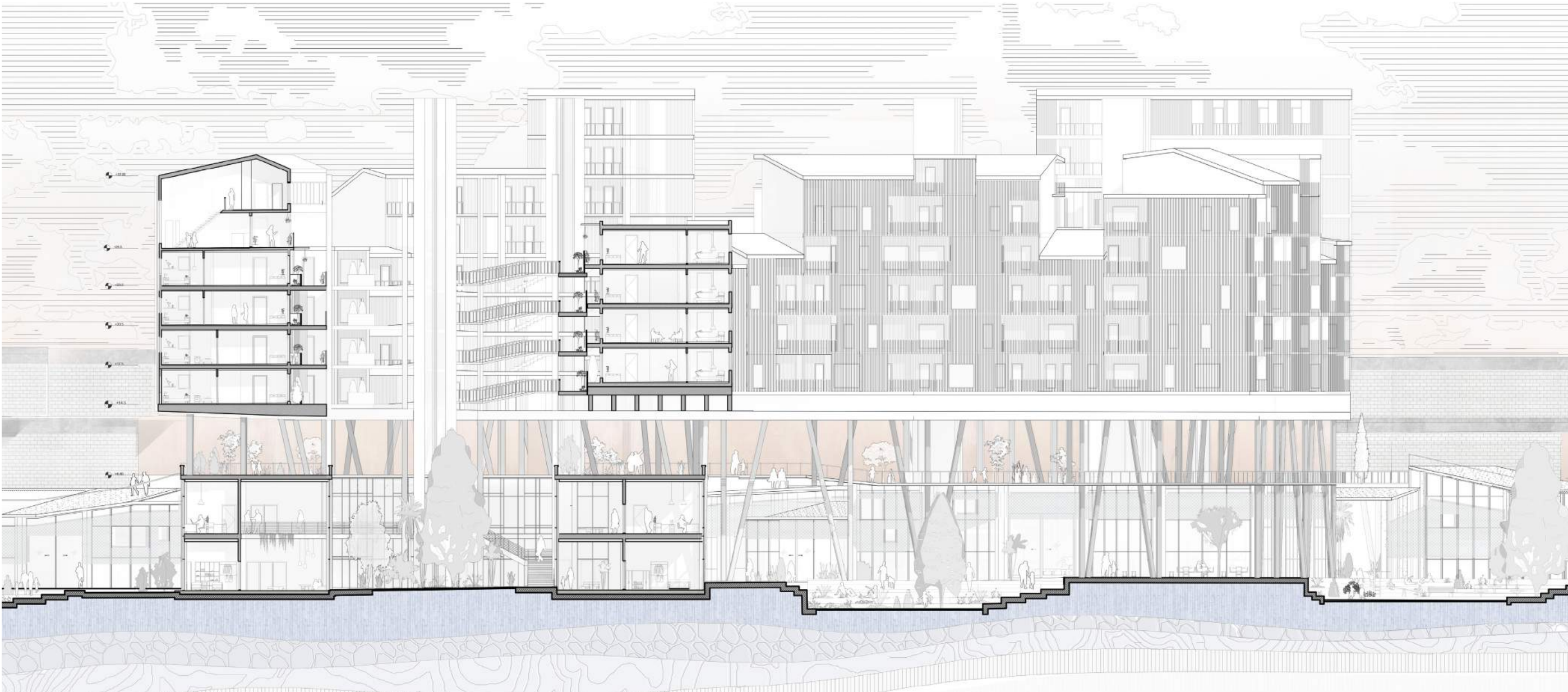
DISTRICT 4
The old north of Tel Aviv

PUBLIC SPACE 3.0

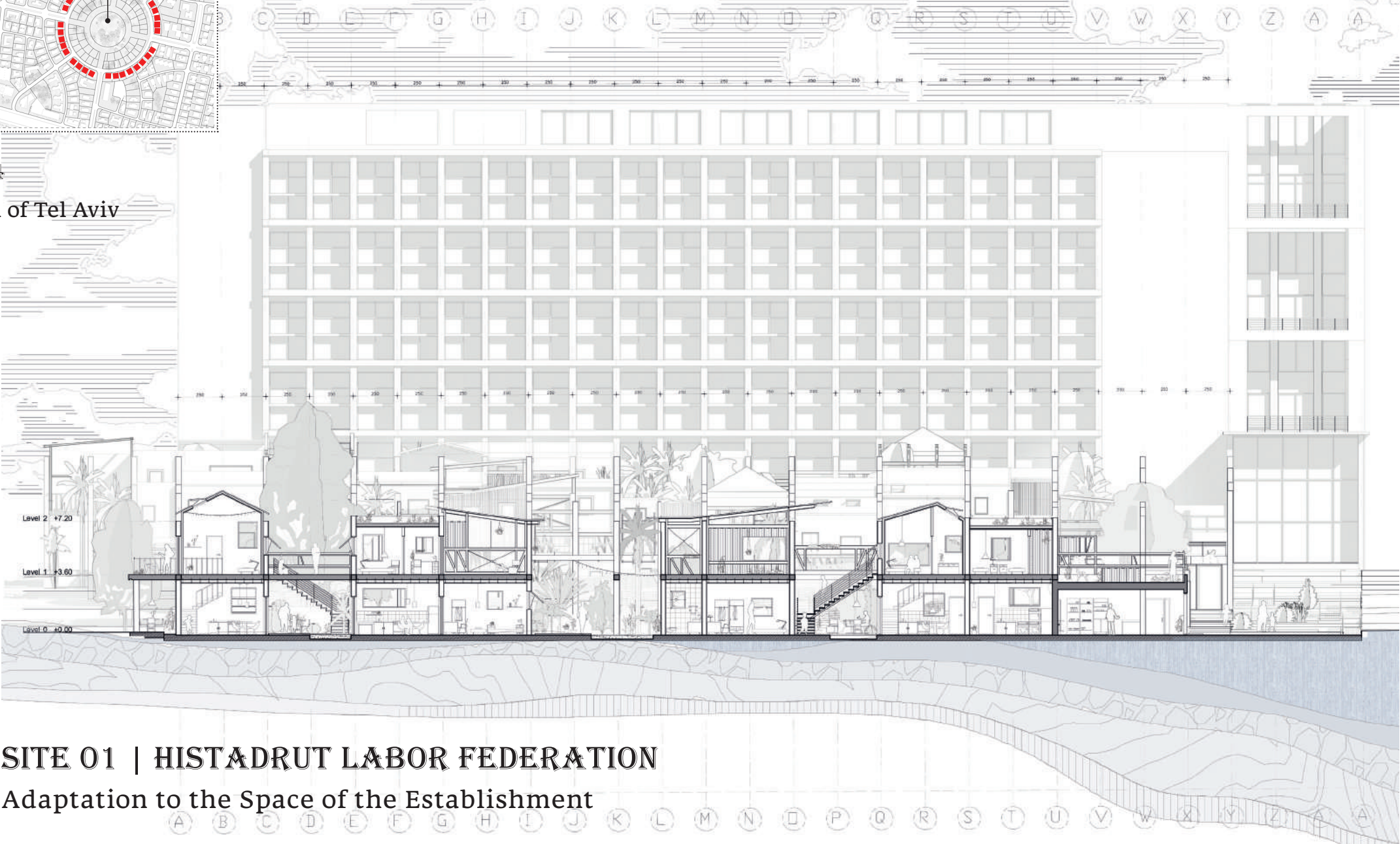
A new type of public space;

In light of its weakening today and in response
to its' manifestation in the past

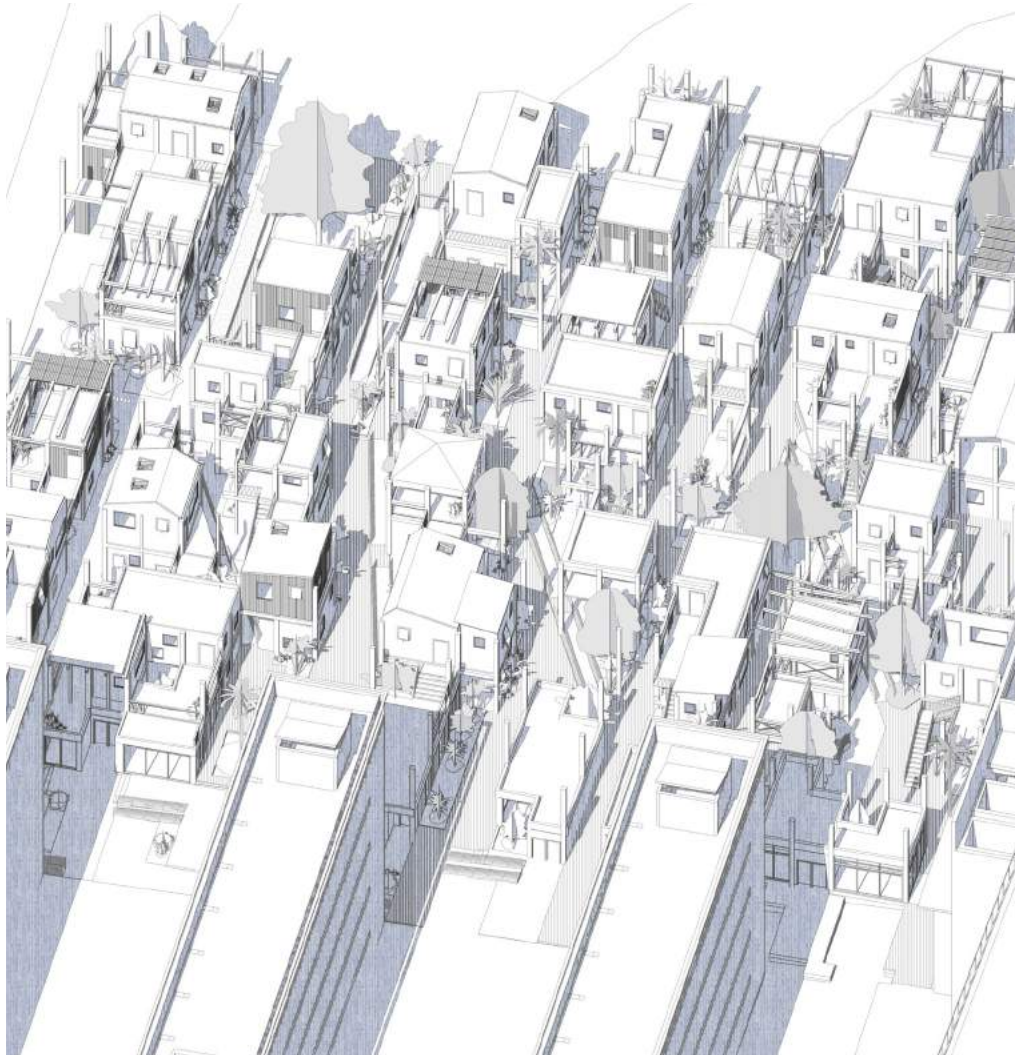
In the era of neoliberal urbanism, the public space is declining. Operating
between two layers that represent two different types of public spaces – the social-
establishment space and its remnants, and the economy and commercially-
driven space of the present, the project suggests an alternative reading and the
creation of a third type of public space.



SITE 02 | STATE-SQUARE
Reshaping the space designed
by the economy



SITE 01 | HISTADRUT LABOR FEDERATION
Adaptation to the Space of the Establishment

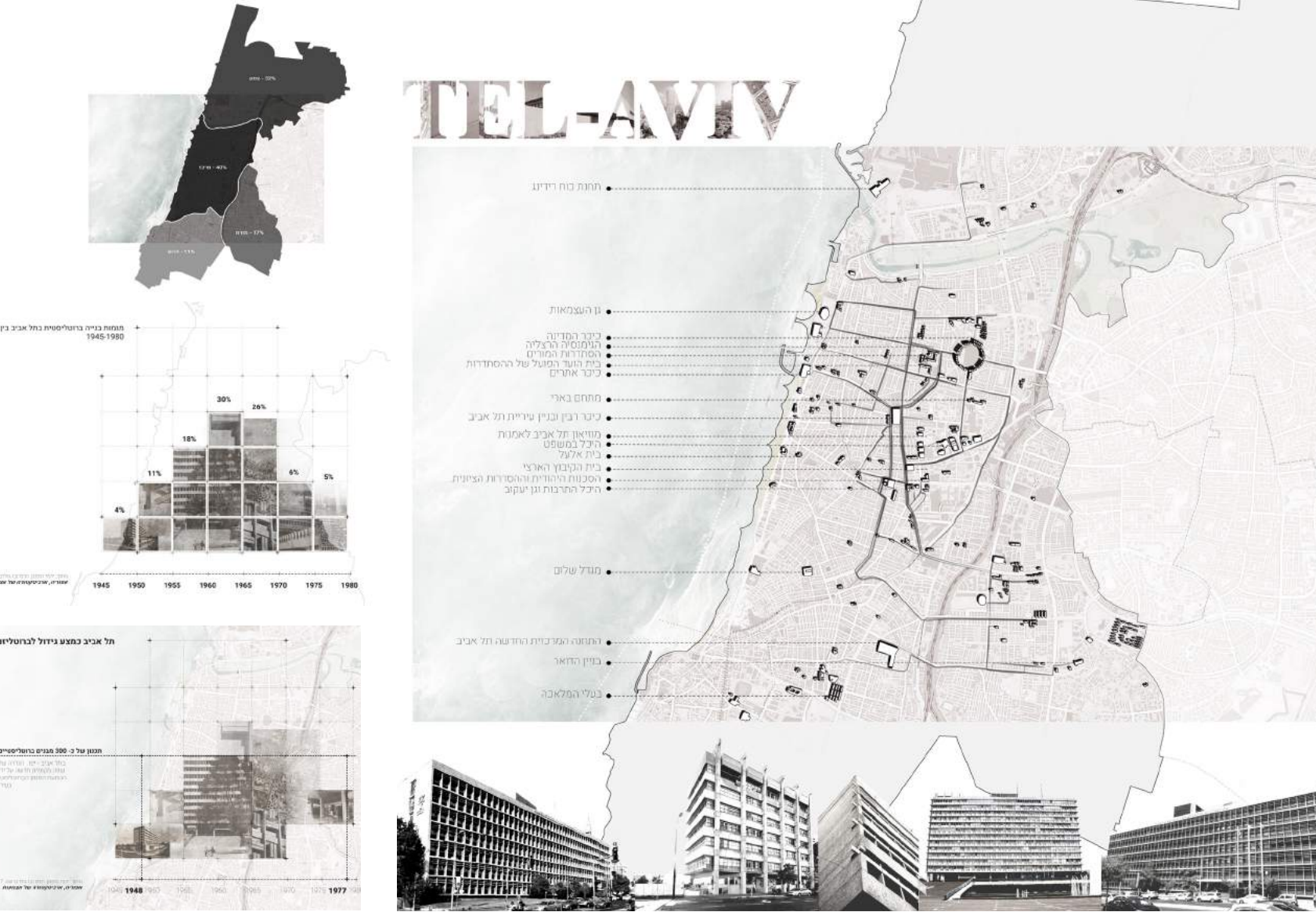


DUAL SPACE

Dissonance between two spatial-historical layers

PAST;
THE PUBLIC DOMAIN OF THE NATION-STATE

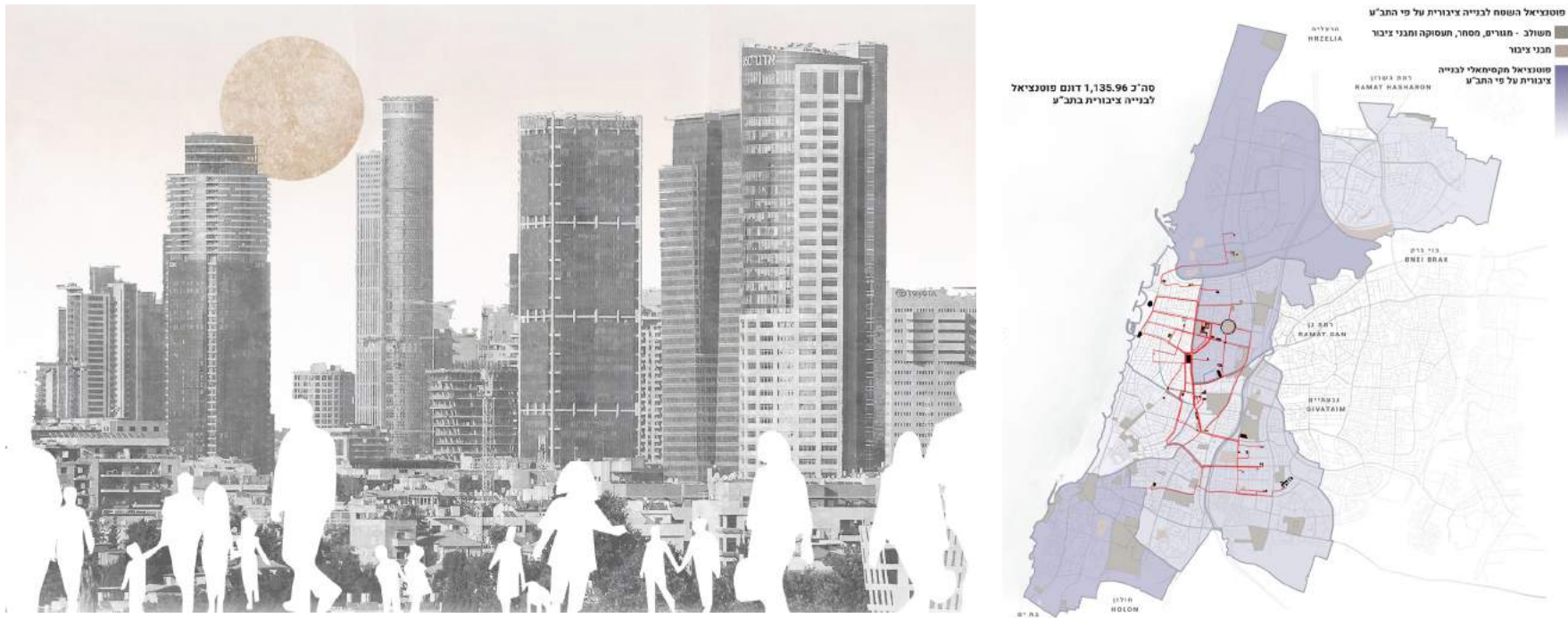
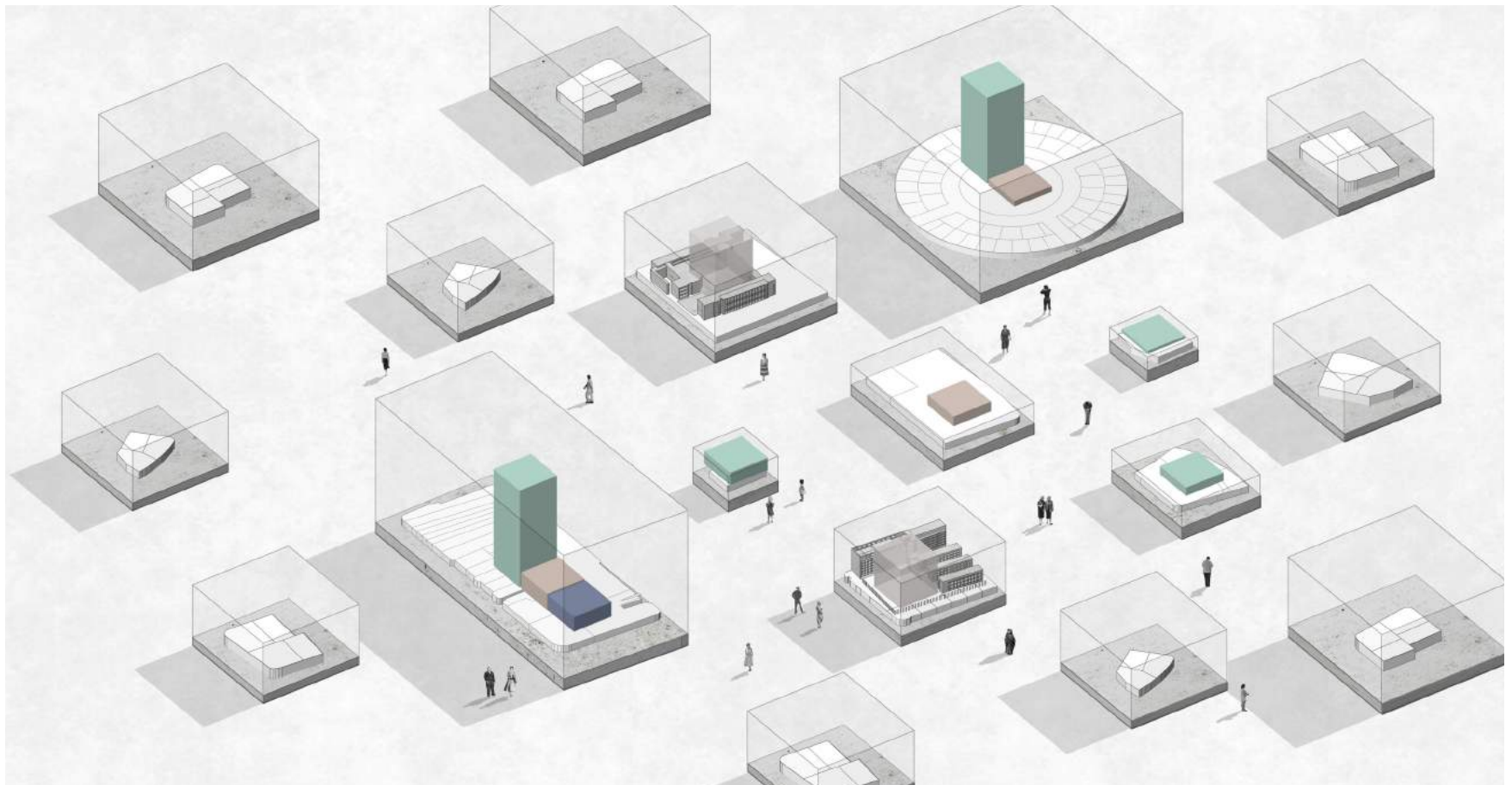
In the years following the foundation of Israel, the Nation-State and the Eestablishment were the two dominant forces shaping space. As a part of the process of shaping the national consciousness, Architecture was harnessed, specifically in the form of the Brutalism. Many public buildings and establishments were constructed, corresponding to this style's characteristics. The public component was inherent in this Architecture which was characterized by national-institutional monumentality.



BRUTALISM; As an architectural tool in the hands of the establishment

PRESENT;
COMMERCIAL-ECONOMIC TYPE
OF PUBLIC DOMAIN

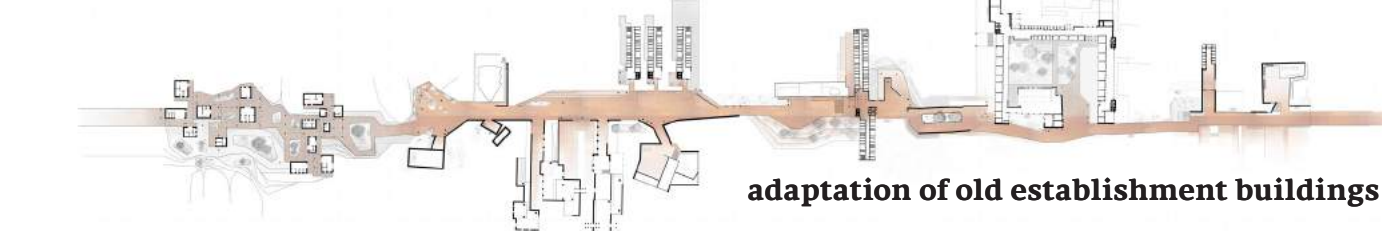
Globalization and the economy have replaced the nation-state in the formative role of space and, together with privatization processes and the adoption of the consumerism culture, have altered the merits of public spaces. The economy that governs most planning processes nowadays lead to a decrease in the quality and quantity of urban public space.



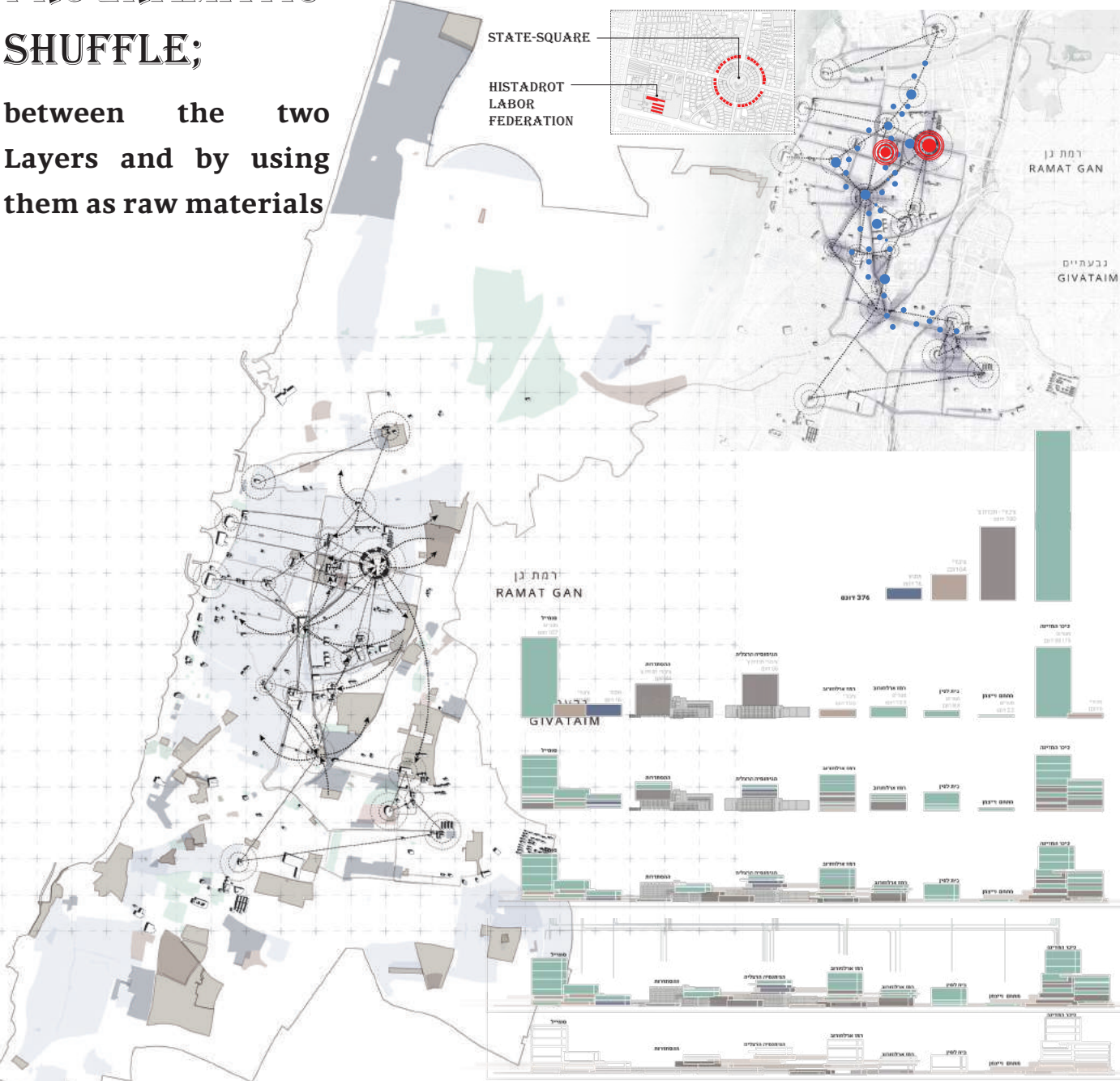
EXCLUSION; A common characteristic of the two layers - their tendency to exclude certain populations or audiences

FUTURE ?
A THIRD TYPE OF PUBLIC SPACE

a proposed alternative both to the nation-state space of the past and to the global-commercial one thriving today. In an urban scale, a shuffling act is proposed, in which both of the layers are used as raw material from which a new type of public domain is to be made, experienced as a continuous urban, public space.



PROGRAMATIC
SHUFFLE;
between the two
Layers and by using
them as raw materials

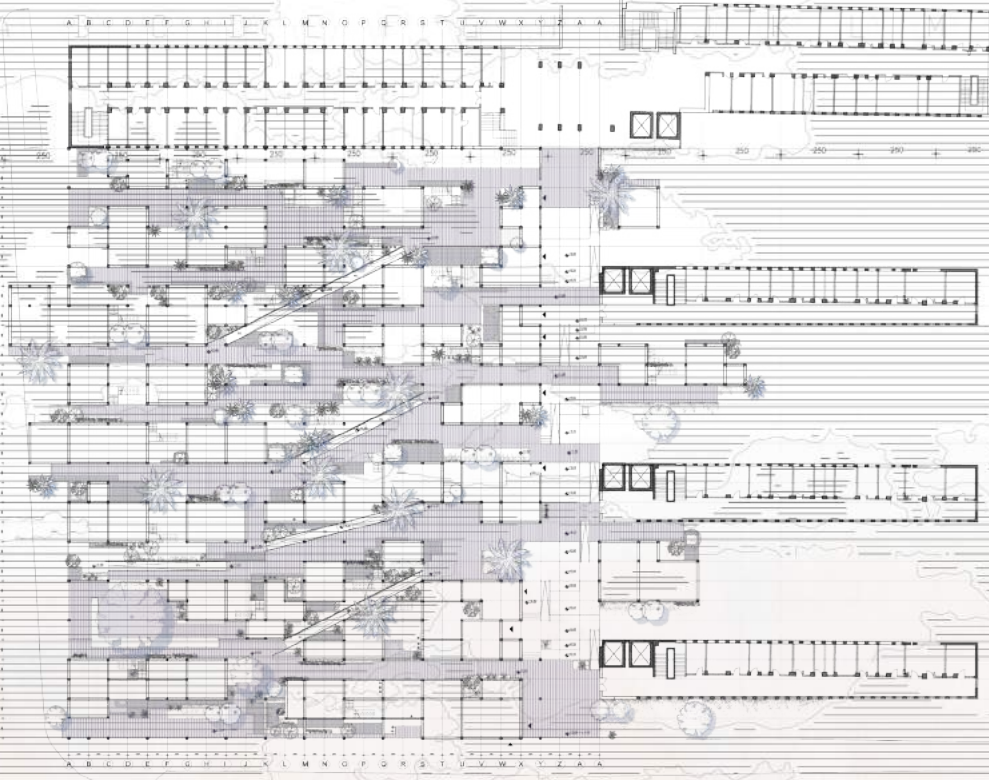
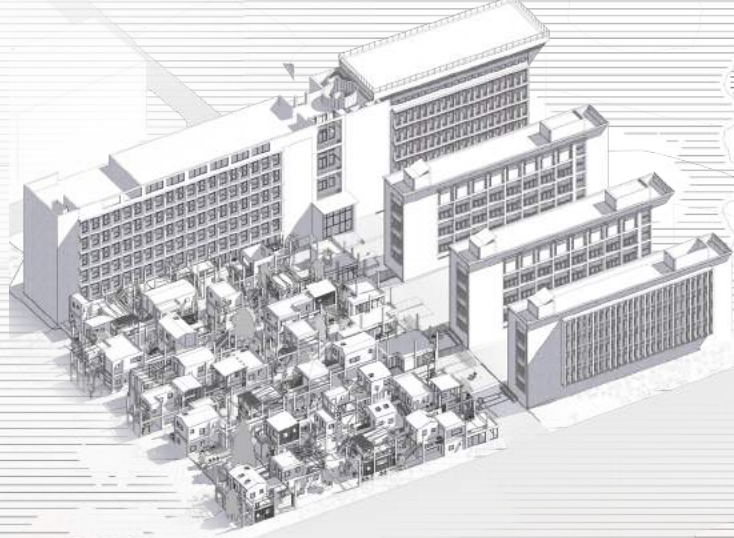
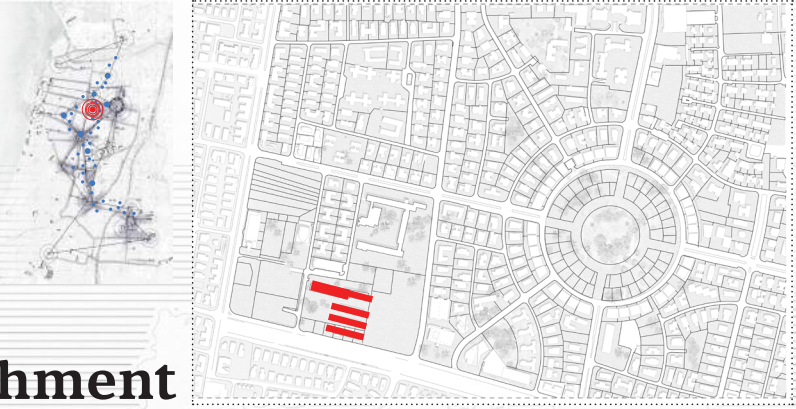


URBAN STRATEGIC PLAN; Mobilizing Future Building Rights- via an alternative mechanism

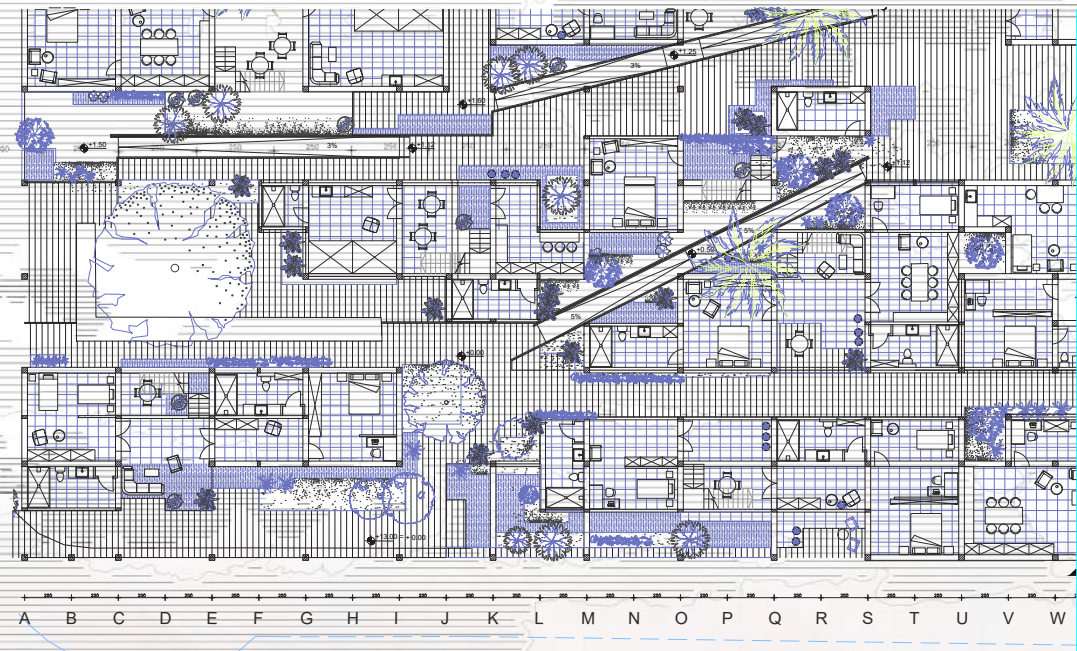
SITE 01 | HISTADRUT LABOR FEDERATION BUILDING

The past public domain,
produced by the establishment

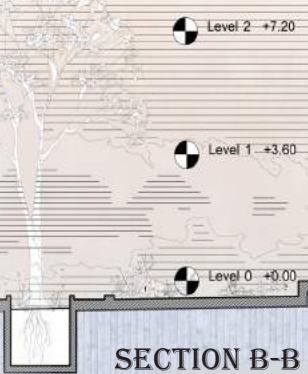
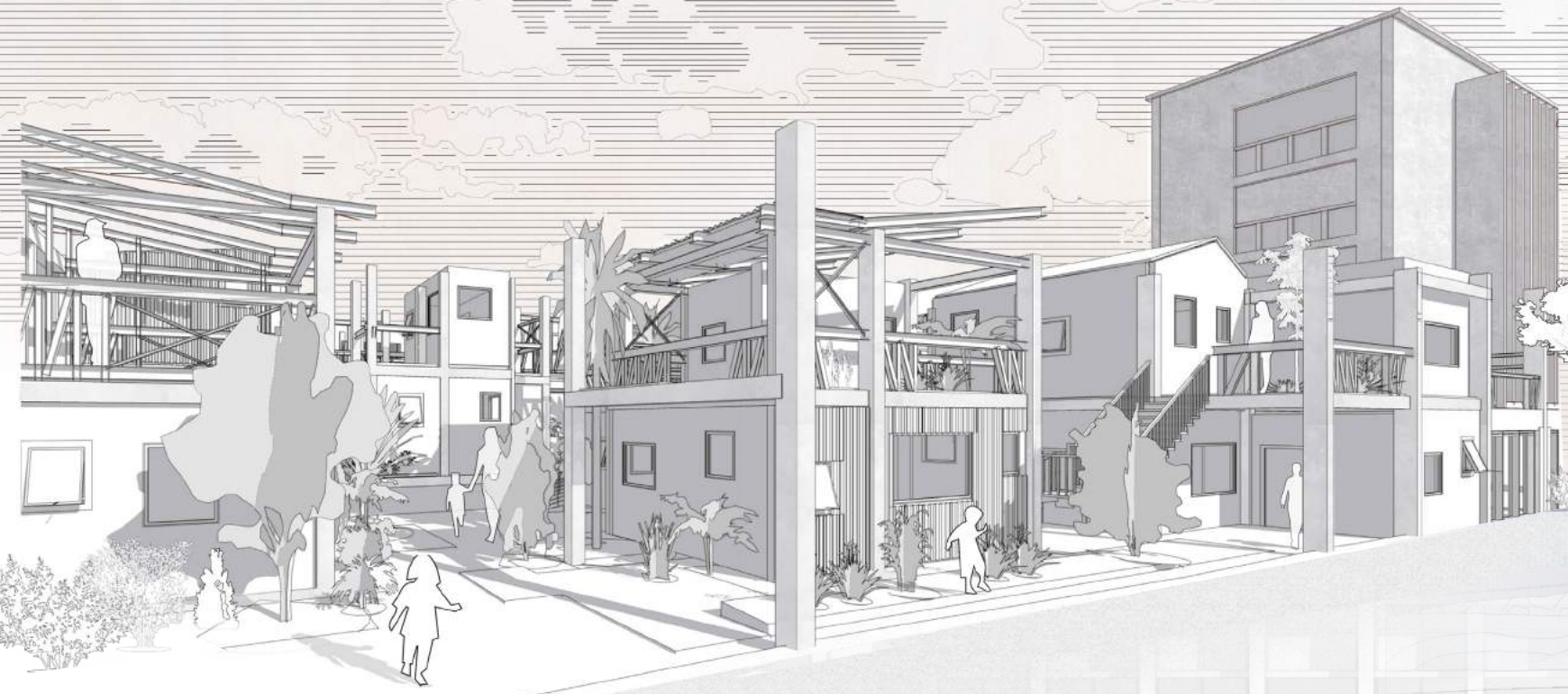
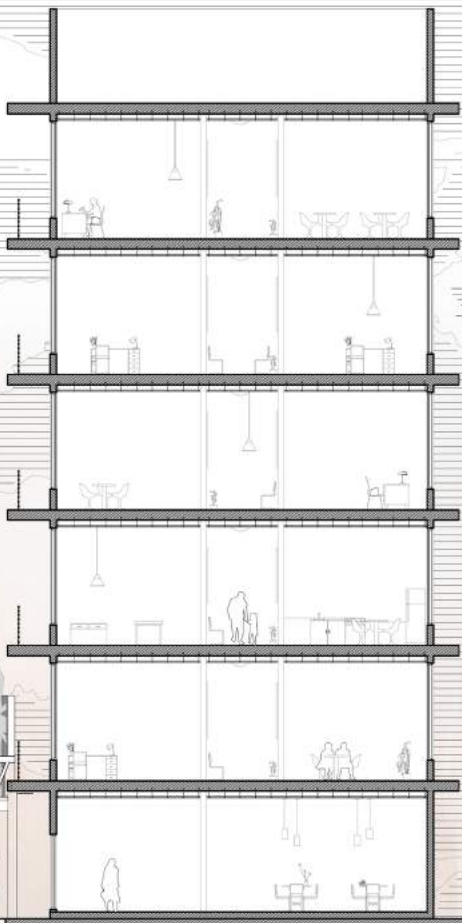
The architecture which was once used by the state to maintain social
order, is now adapted, reshaped from the bottom by and for the public.



SITE PLAN | 1:250

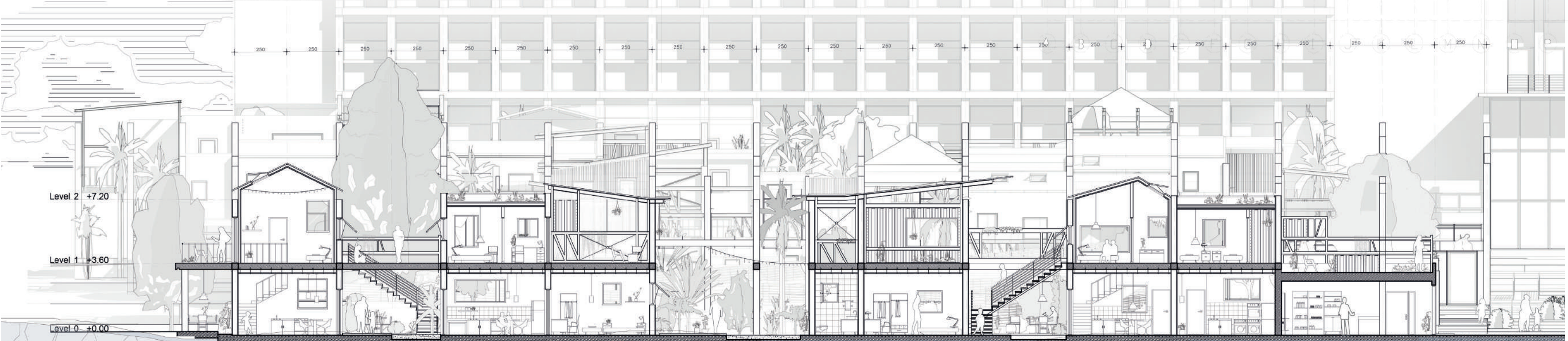


PLAN | 1:100



SECTION B-B

WORKERS VILLAGE; open for civilian
initiatives such as housing for foreign workers
and various spaces for workers of disadvantaged
sectors

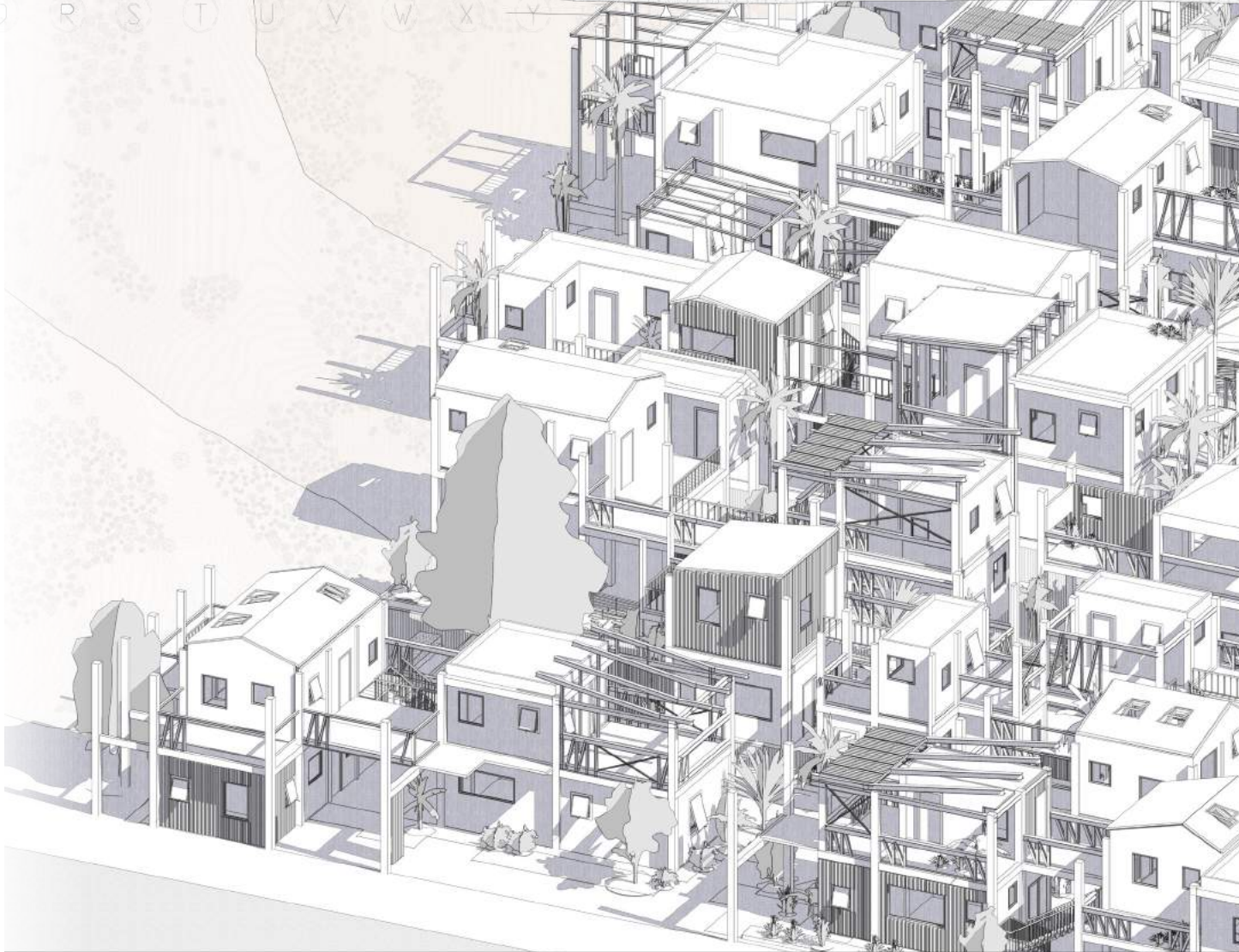


SECTION A-A

— FLAT, BRUTALIST GRID

➤ SPATIAL, CONSTRUCTIVE GRID;

A heavy platform is created, on which light, cheap and flexible architecture is designed and installed



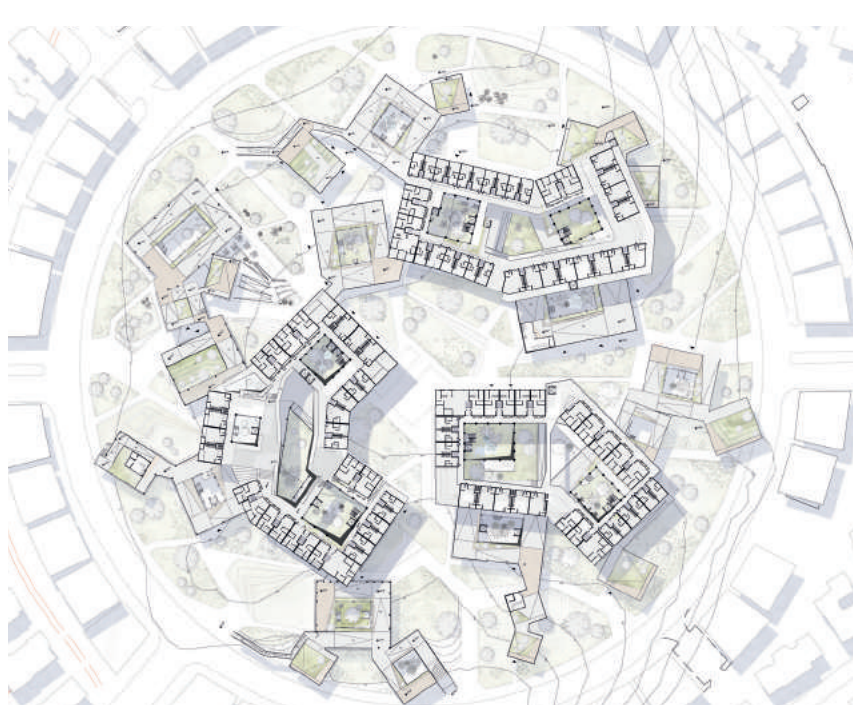
SITE 02 | STATE-SQUARE

commercial-economical
public domain

The space planned and molded by global economy receives a dose of public building rights, in an attempt to balance the forces that shape them today.



PLAN | GROUND LEVEL | ZOOM IN



PLAN | RESIDENTIAL TYPICAL LEVEL

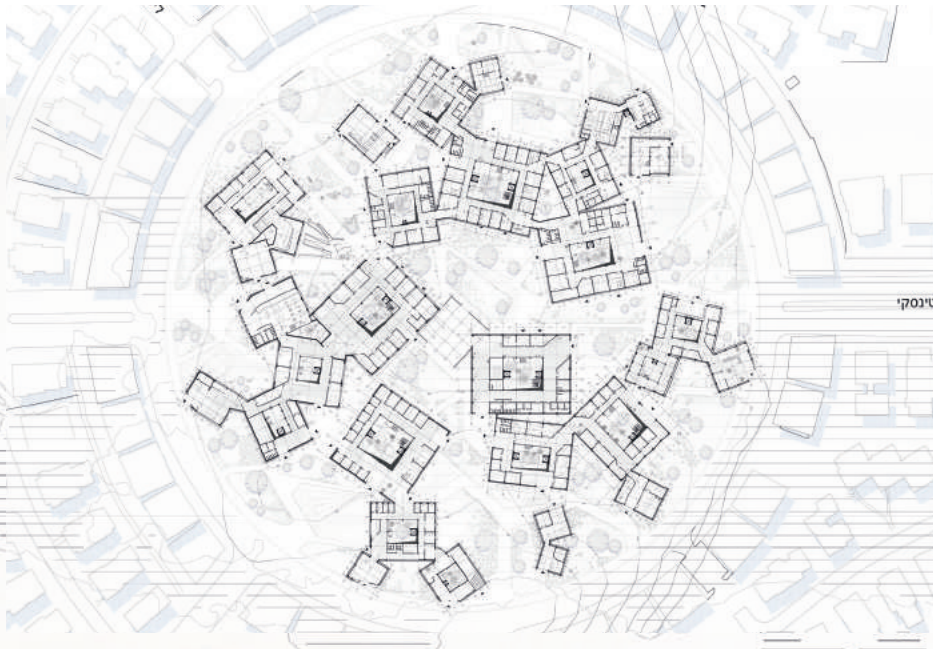


PLAN | PUBLIC ROOFTOP LEVEL



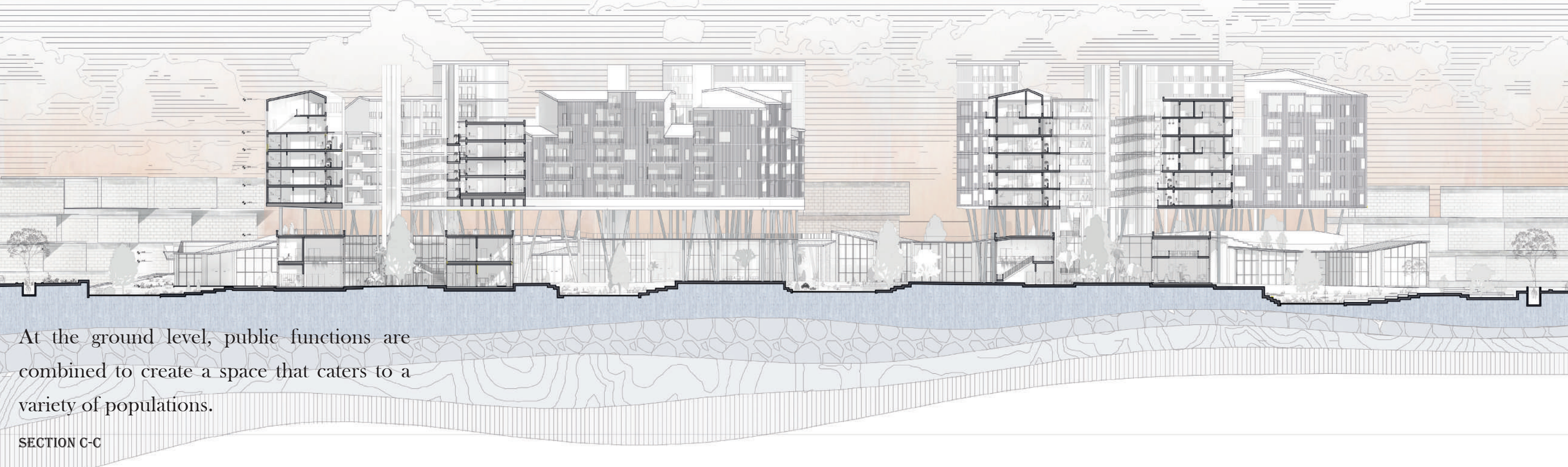
URBAN NETWORK AND WALKABILITY SCHEME

As a part of the mechanism proposed in the project, future land uses are reinterpreted and public development rights are transferred to the square.



PLAN | GROUND LEVEL

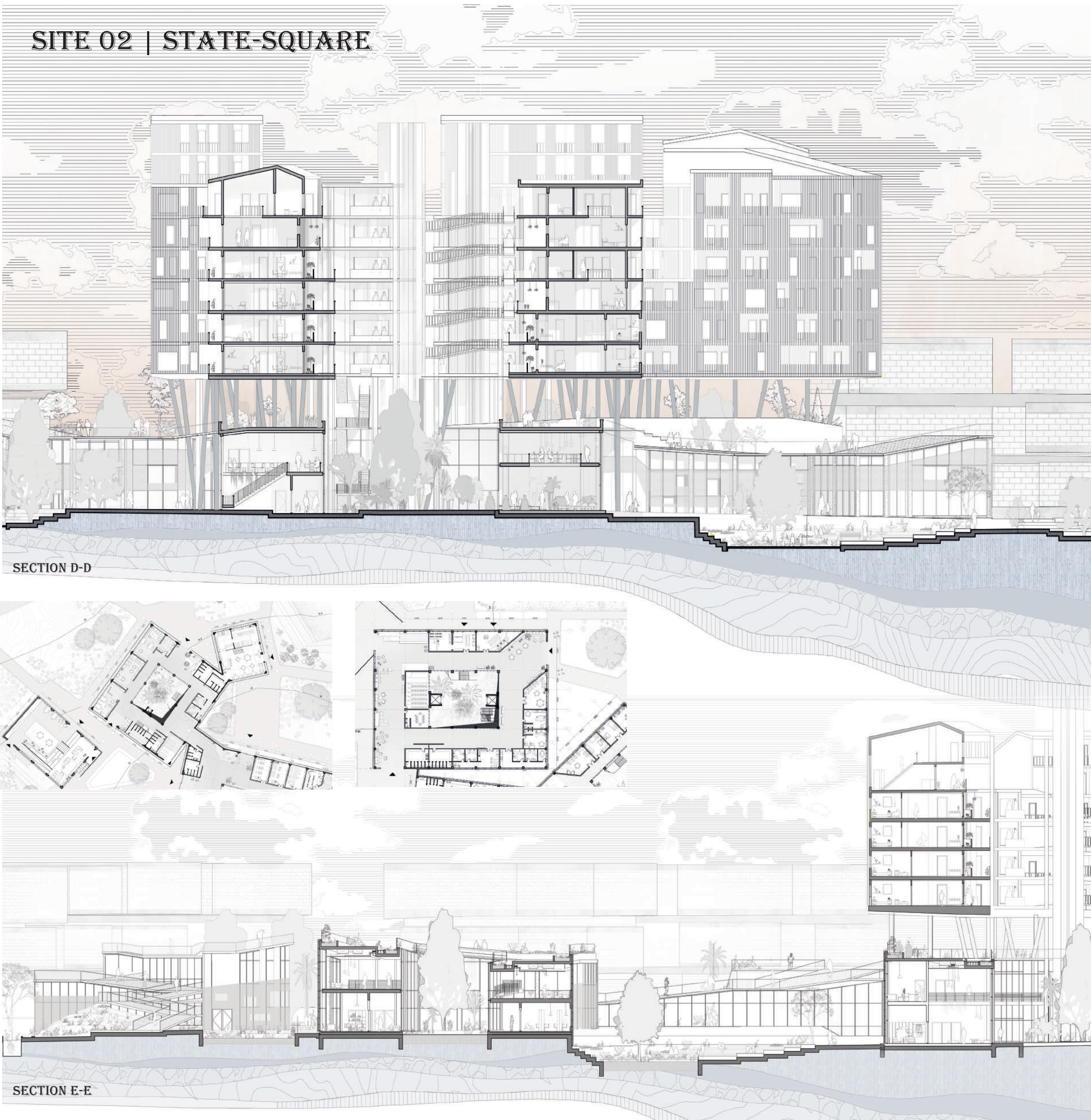
The residential levels free up the street levels for public uses, creating an open and disassembled scheme.



At the ground level, public functions are combined to create a space that caters to a variety of populations.

SECTION C-C

SITE 02 | STATE-SQUARE



Thus, on the backdrop of the decline of the public space, and by learning and critiquing its national-establishment-related expressions of the past, the project proposes a third, democratic and dominant type of public space.

Juxtaposition of forces and elements in space, creates a new public space, designed as a spatial reaction to an existing context - one that belongs to all of its visitors, and is shaped by their presence.

SITE 01 | HISTADRUT LABOR FEDERATION BUILDING

