

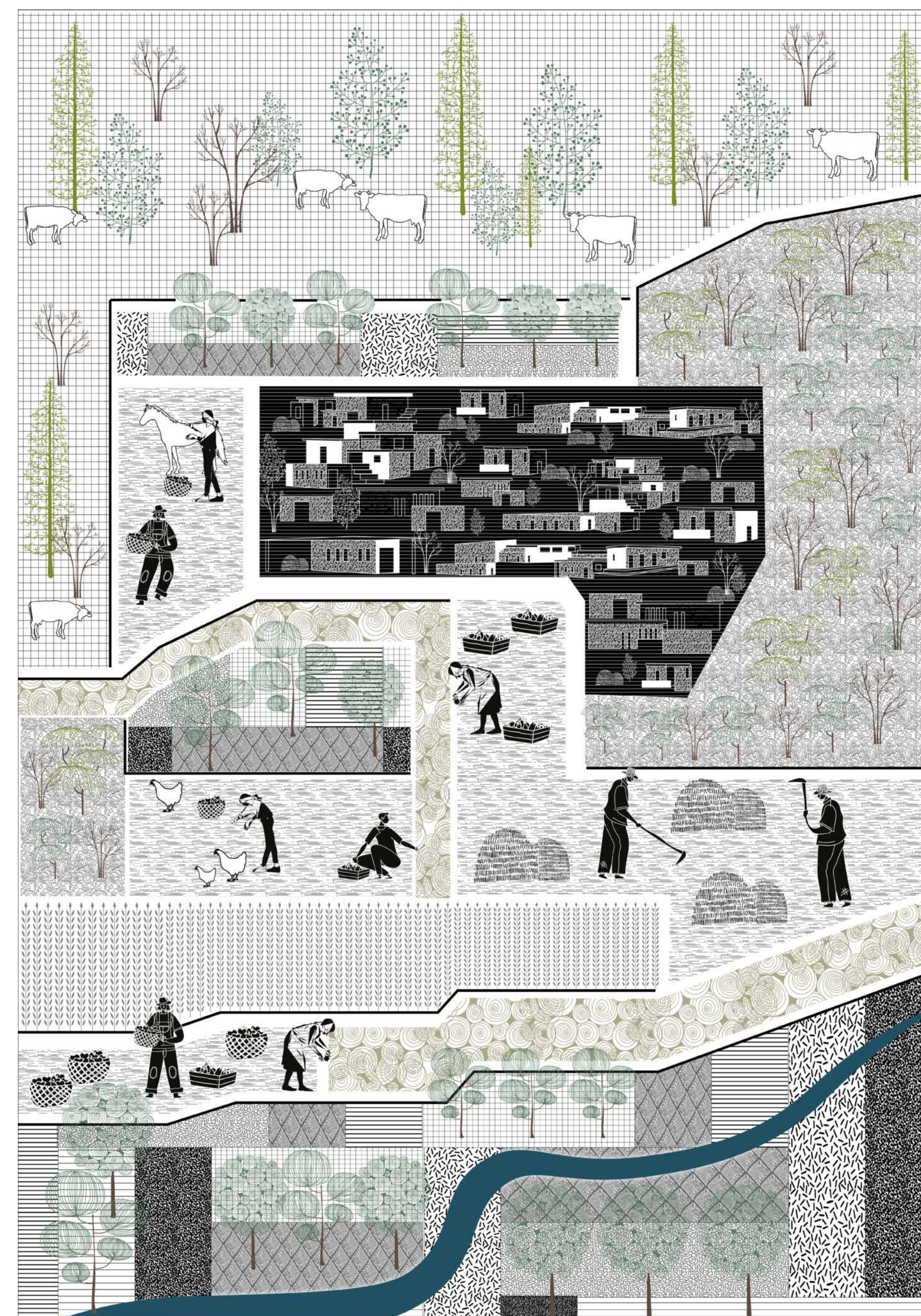
MILIEU

Development and planning of the
socio-cultural landscape in Golan Heights



The project proposes an ethical approach for continuous future planning, based on the term milieu; that describes the relationship between society, space, and landscape.

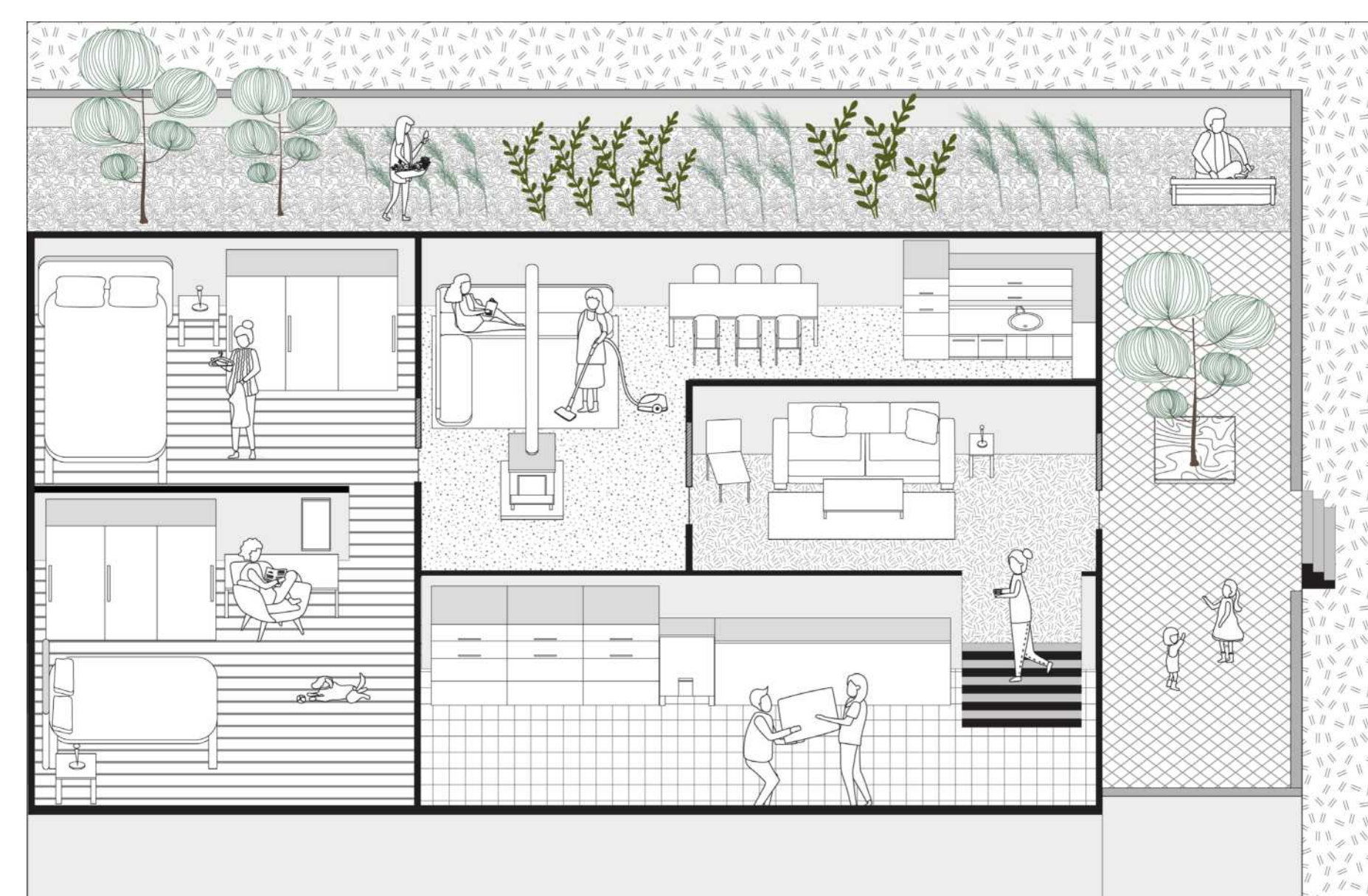
This approach identifies and understands the existing socio-cultural, economic, and spatial values, and creates a dialogue between local-indigenous knowledge and planning professional knowledge.



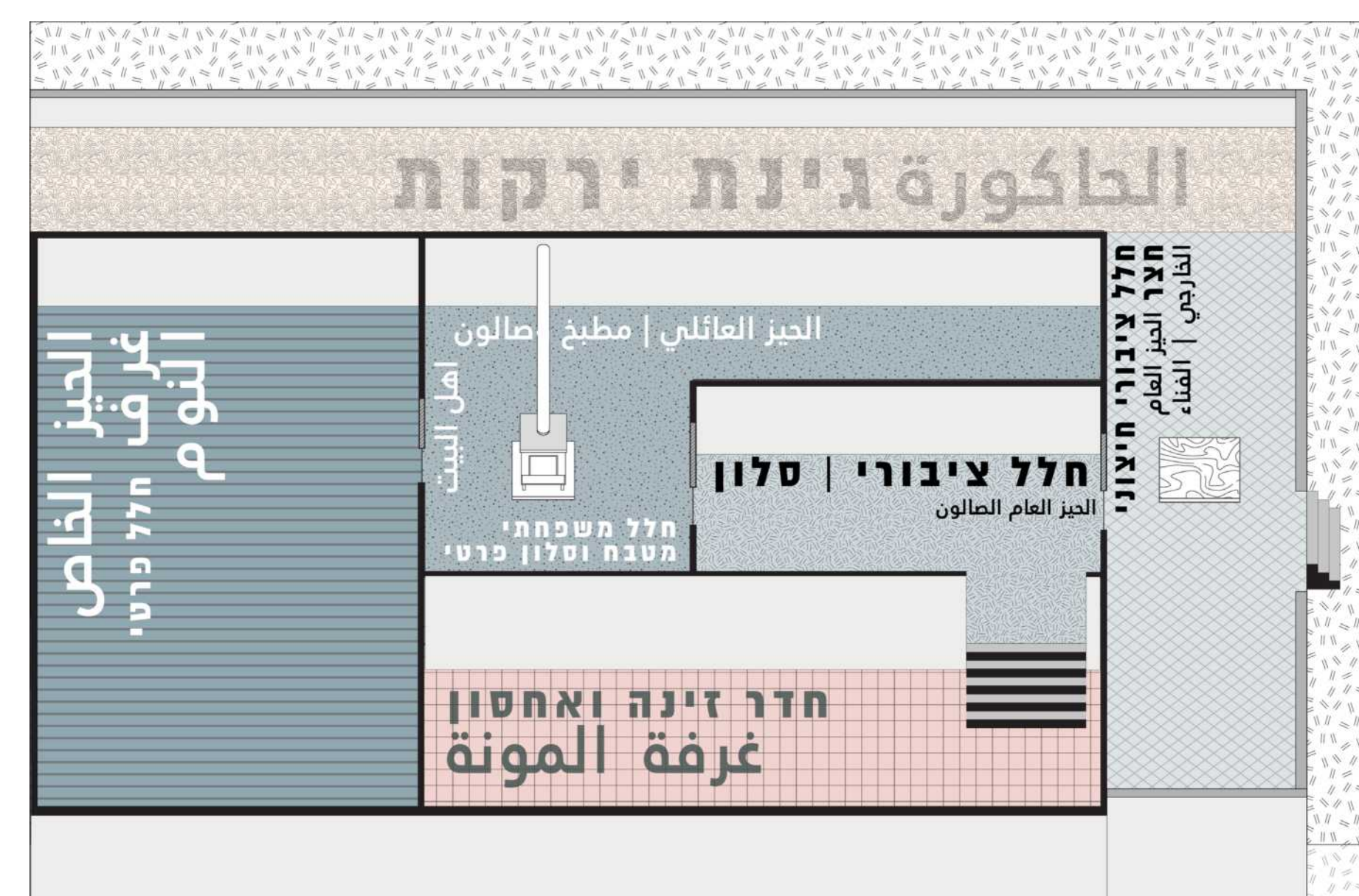
historical milieu analysis and documentation: Urban Fabric



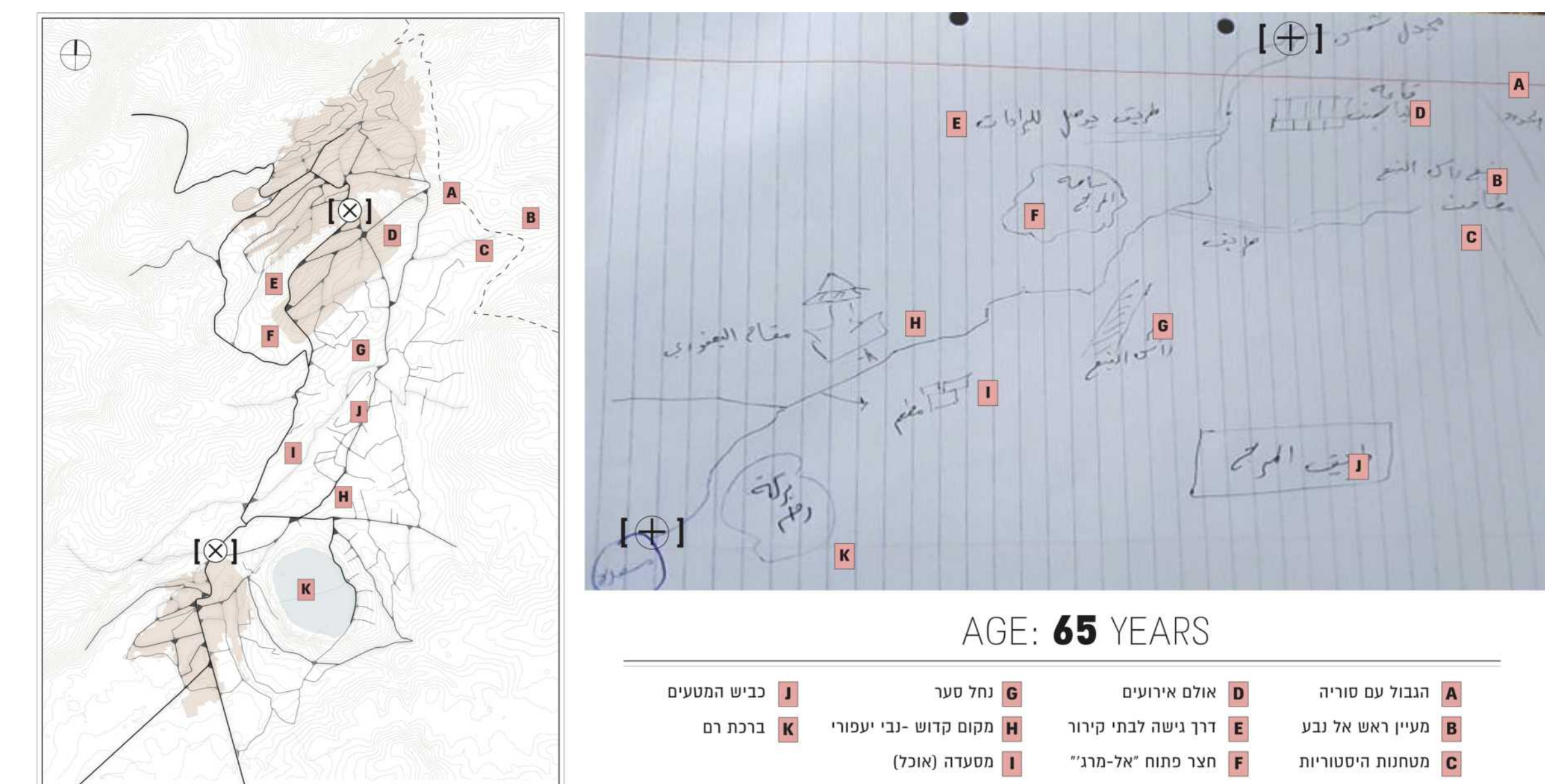
historical milieu analysis and documentation: Residential Fabric



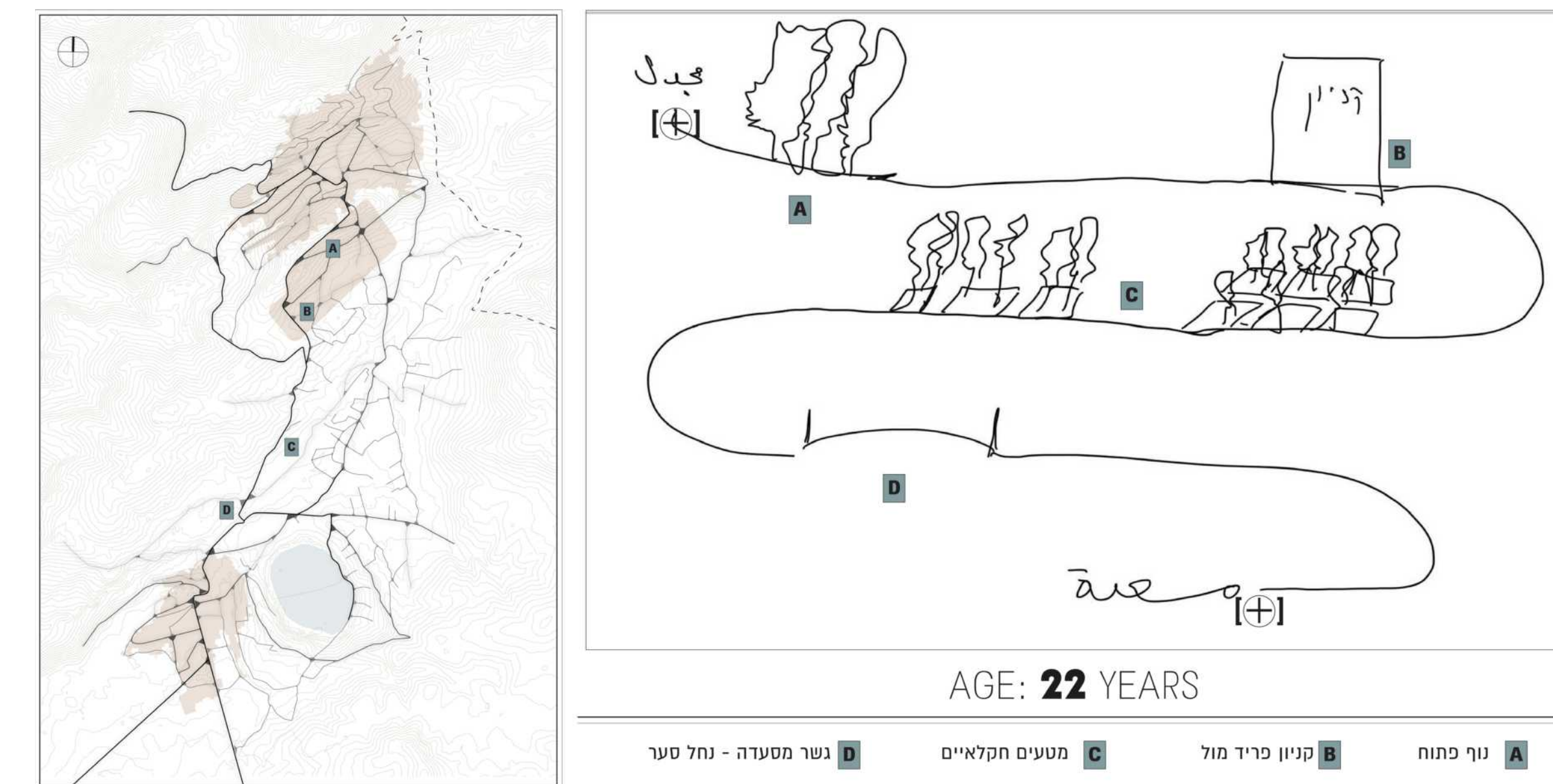
historical milieu analysis and documentation: House spatial components



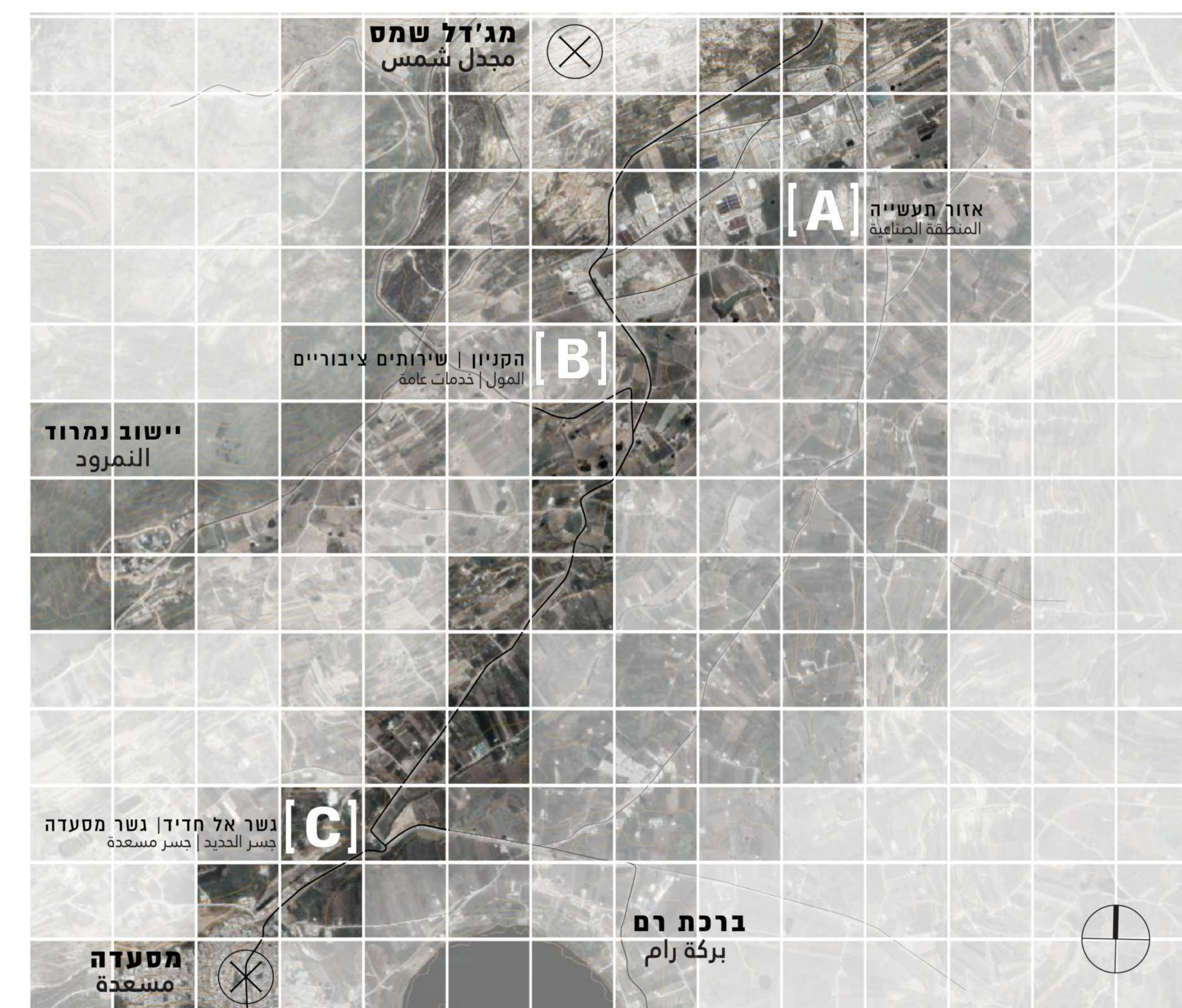
Focusing on, Masada and Majdal Shams, the project offers a social-spatial analysis that allows understanding the community's spatial consciousness as a basis for developing future planning



Cognitive Maps: Age 65



Cognitive Maps: Age 22



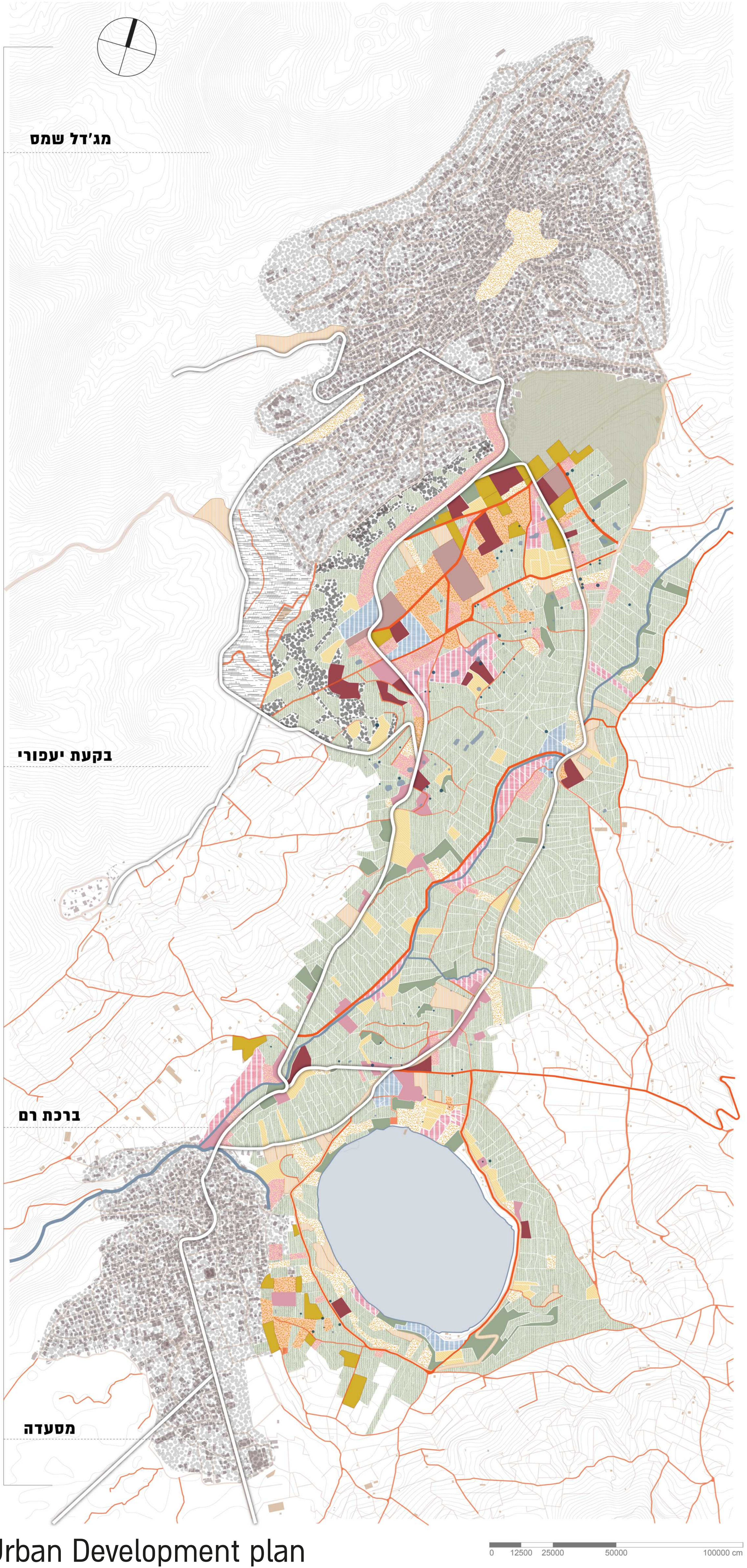
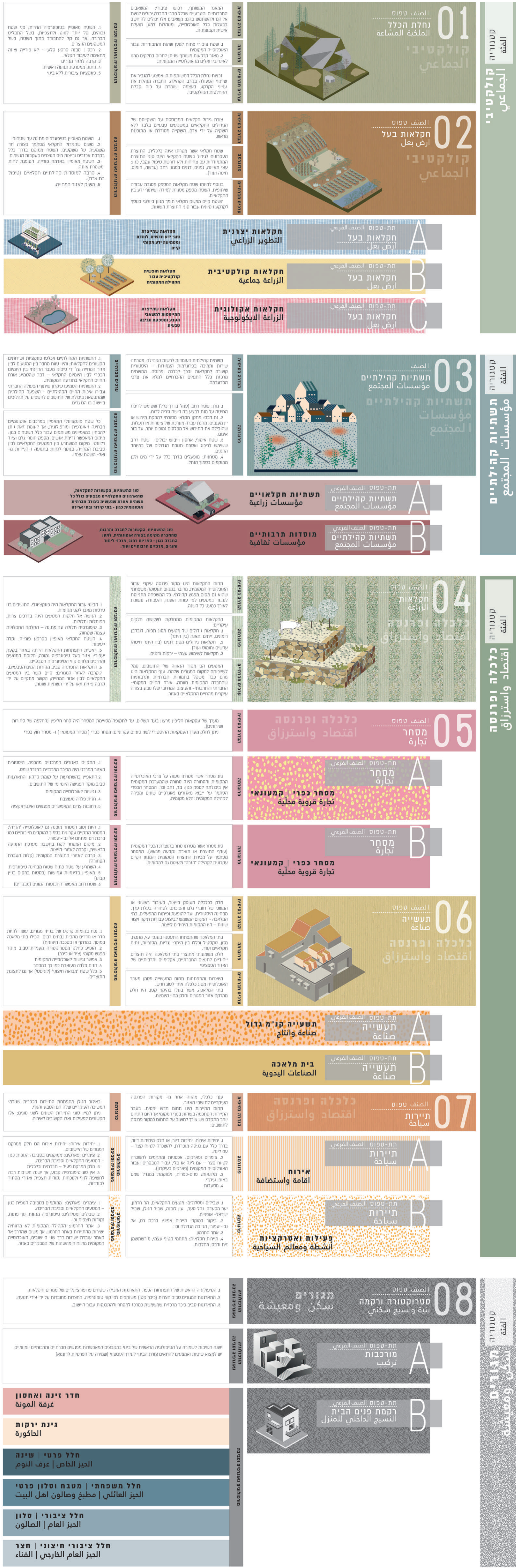
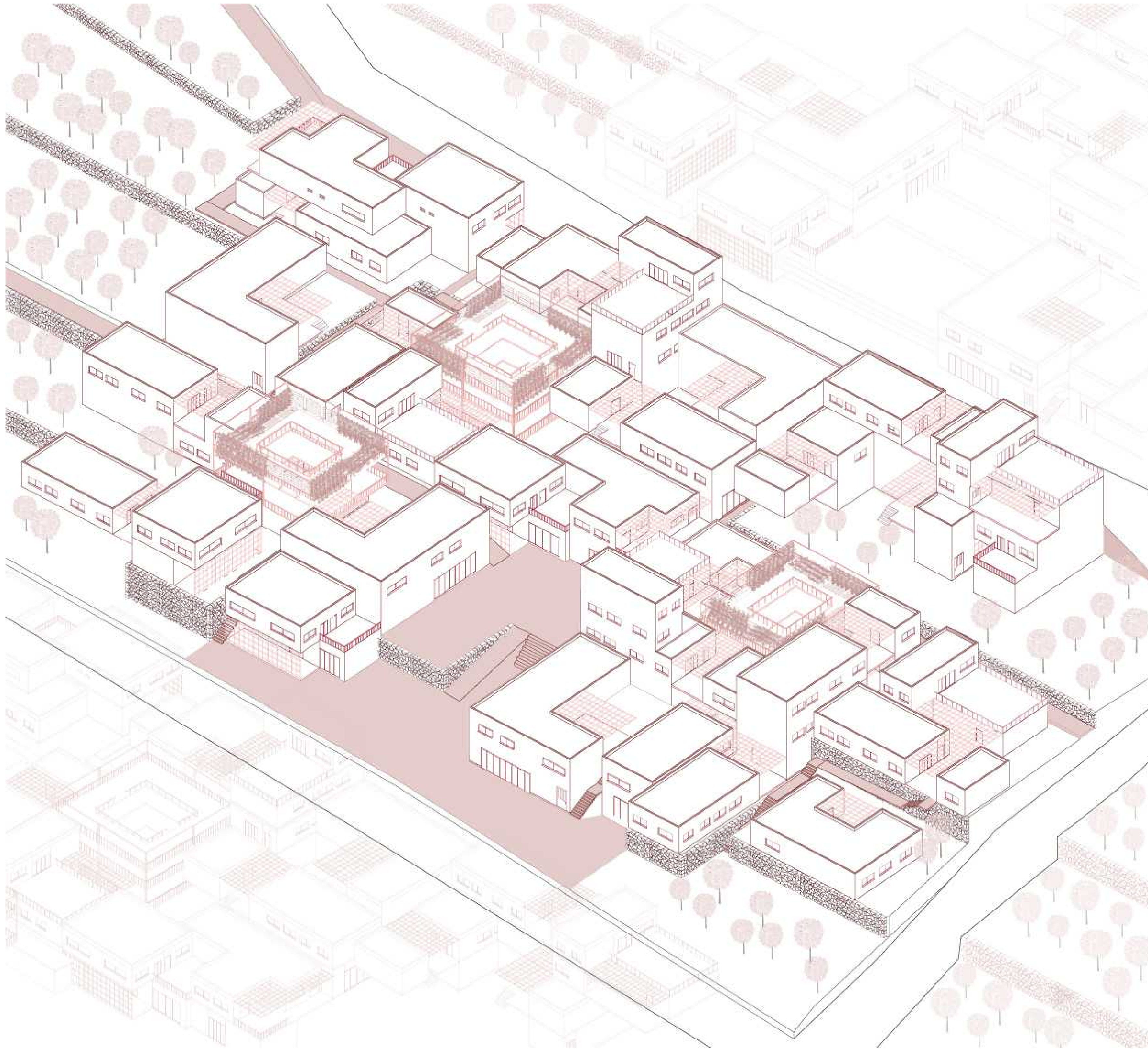
Local Spatial Consciousness Survey

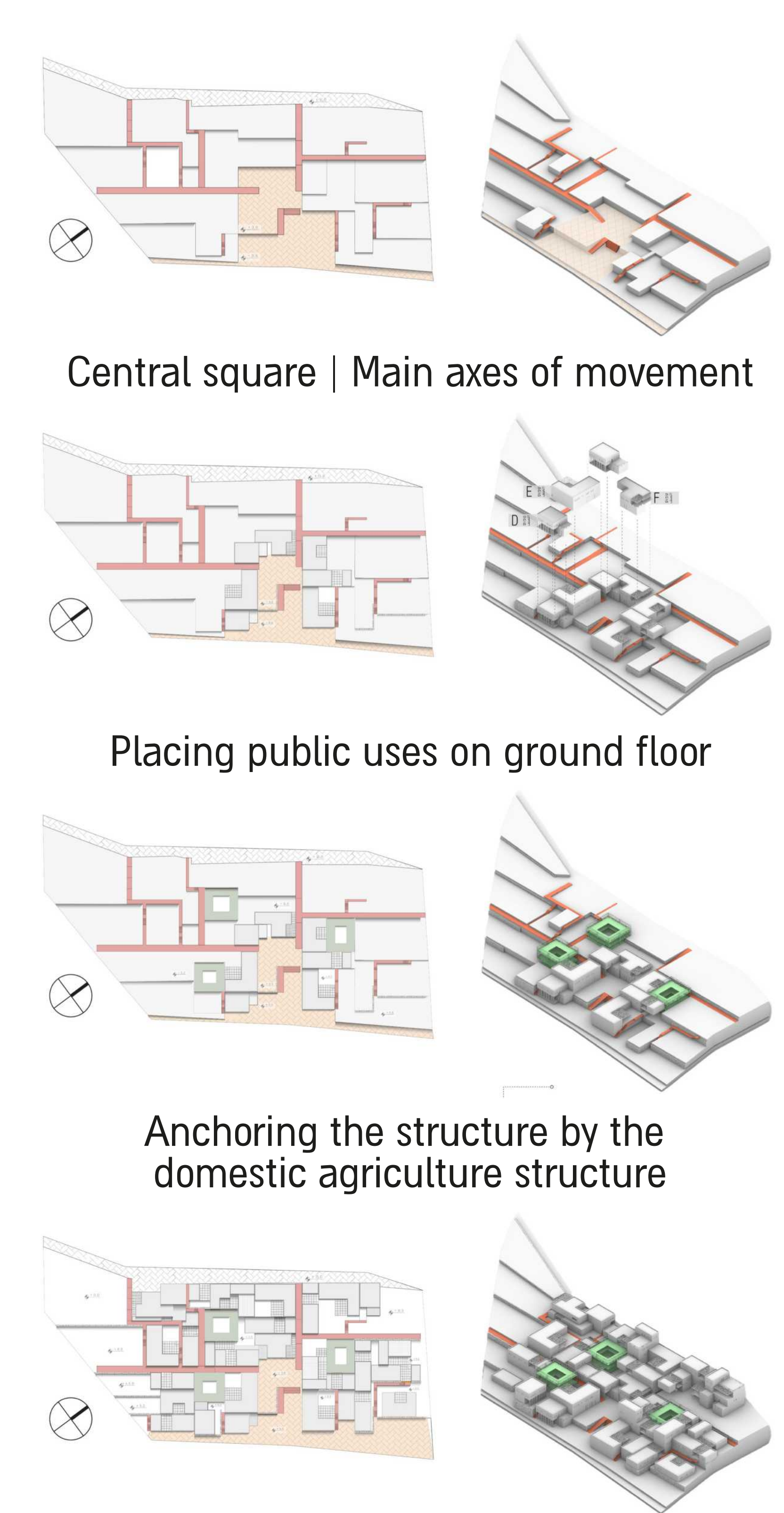
Planning instrument: documenting socio-spatial principles and values

Defining the components of the historical milieu s fabric with the help of professional planning logic and tools.



Urban Development plan: Residential





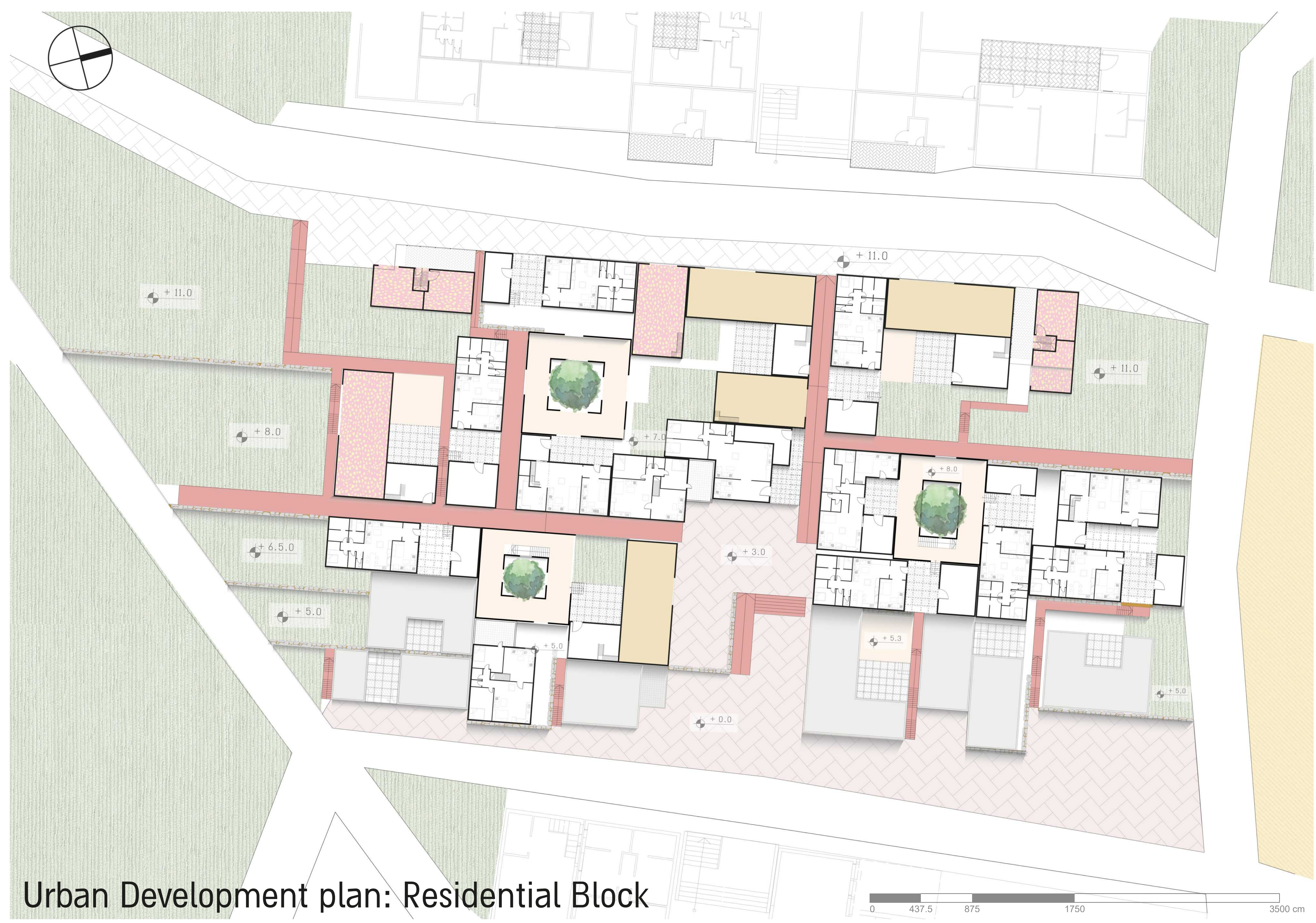
Central square | Main axes of movement

Placing public uses on ground floor

Anchoring the structure by the domestic agriculture structure

Roof plan after adding the other housing units

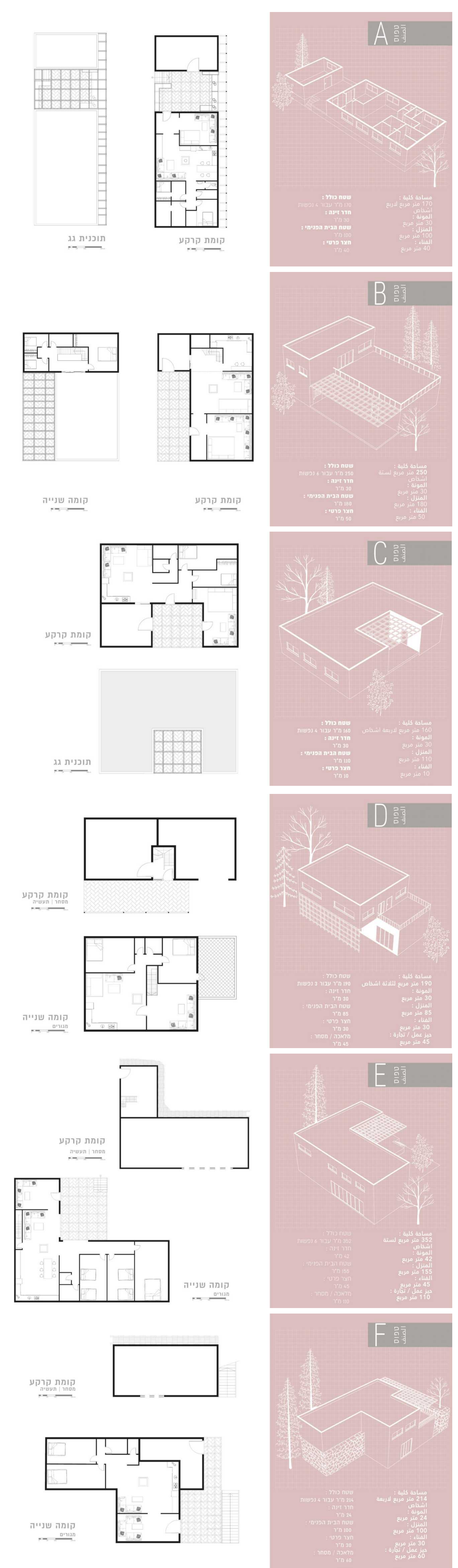
Block's Structure



Urban Development plan: Residential Block



Section



Housing Units' Typologies