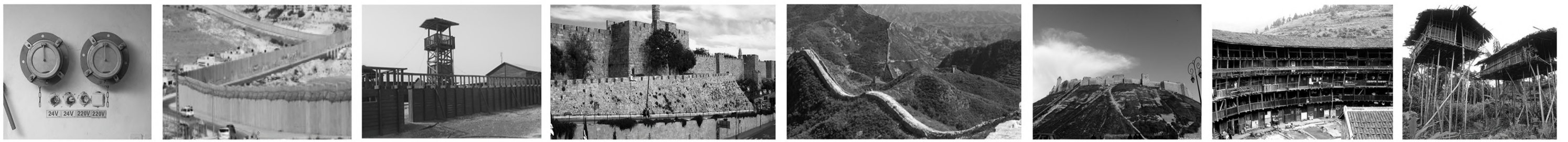


Code Red - civil-protective architecture

Background

Alon Goldengoren

From the dawn of history, humanity has had to respond to threats. Along side with military solutions, "defensive architecture" has developed as a civilian solution

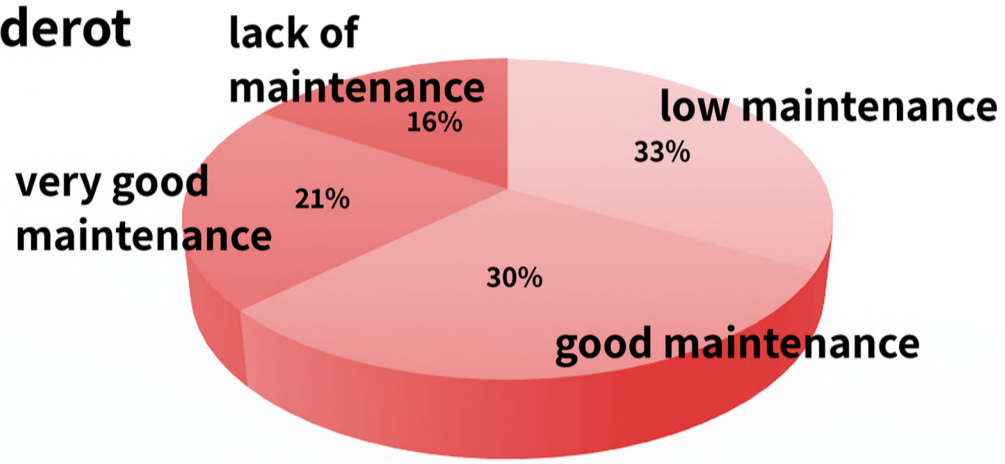


city shelter The separation wall Wall and tower settlements Jerusalem's walls The Great Wall of China unctuous Tulu tribe Corway tribe

As a combat soldier and commander in the "Iron Dome" unit, I was privileged to be part of the world's most advanced military solution in defending the home front, which emphasized the lack of a civilian solution that would enable normal life in the settlements around the Gaza strip

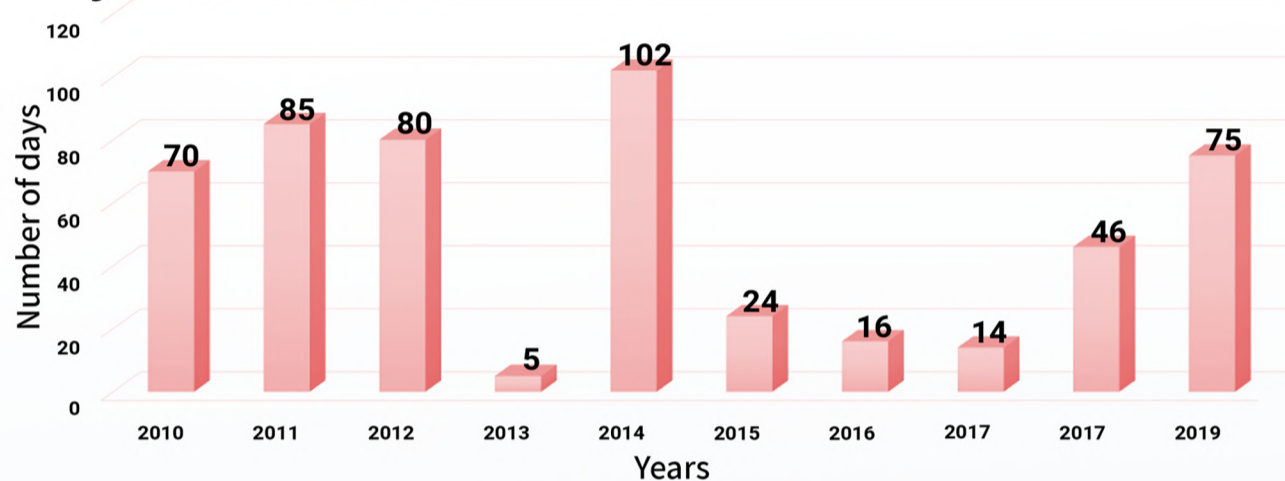
The project tries to provide a solution to the rocket threat problem in Sderot, in the form of a protective architectural complex, where normal life can continue even in an emergency

Level of maintenance of public shelters in Sderot



Only 21% of the public shelters in Sderot are at a very good level of maintenance that allows people to stay in them for a long time

Number of days per year in which Sderot residents stayed in shelters



Sderot residents spend about 52 days a year in shelters, about 15% of the year

Map of Israel



The current situation in Sderot



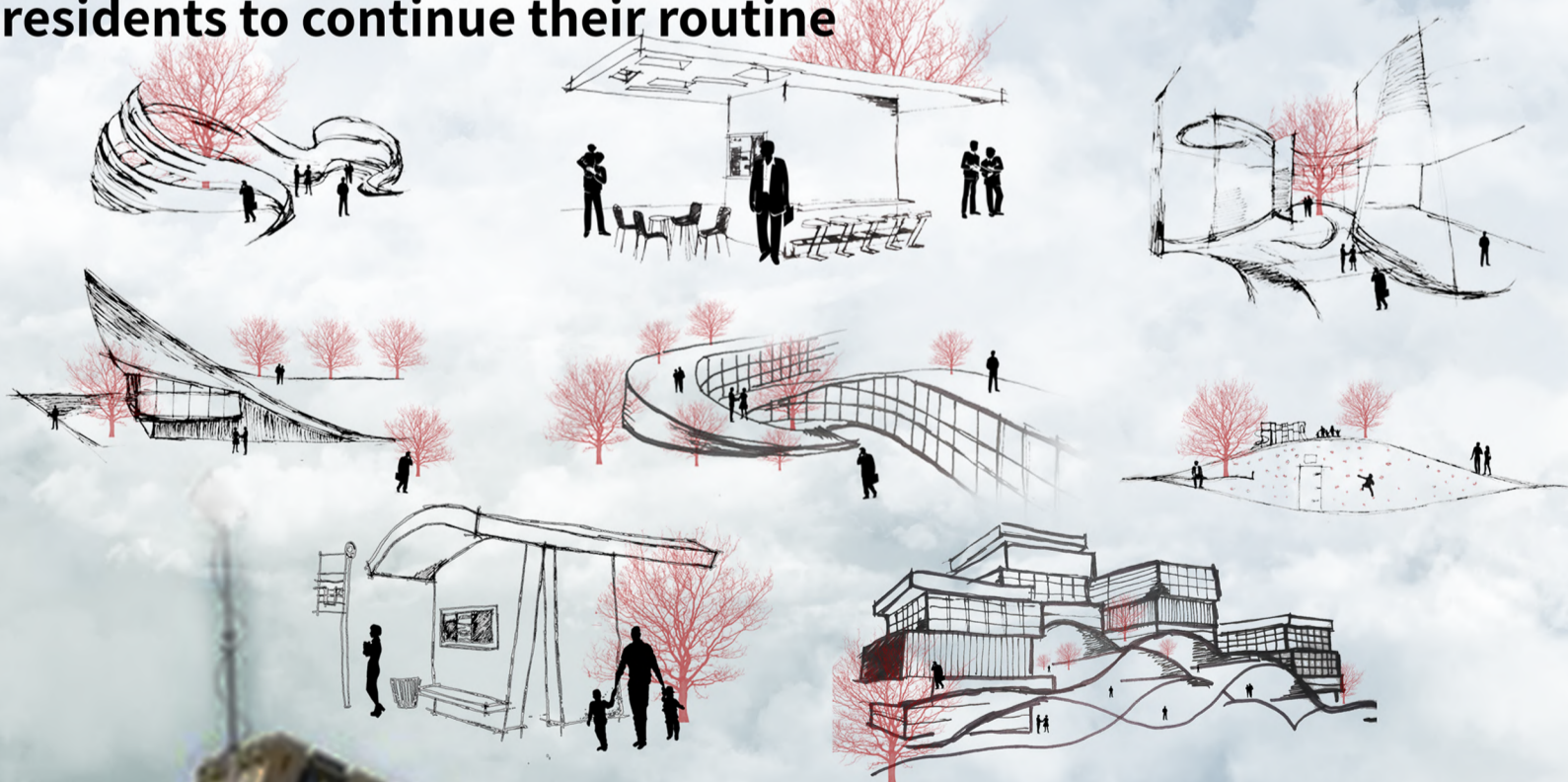
Public shelter Bus stop Playground Residential building

Shelters as concrete empty spaces that bite into the public space
Public protected spaces are empty of any content in peaceful times, so entering them is identified with fear and routine interference

Sketches and inspirations

Conceptual development of the new protected space

As long as the bomb shelter is only a bomb shelter, entering it will forever be accompanied by fear, but when the "protective space" has a use in "peaceful times", it has an architectural added value, and it allows the residents to continue their routine



Guiding principles for planning an architectural solution in the city of Sderot - the existing situation compared to the architectural complex offered in the project

Project proposal Current situation

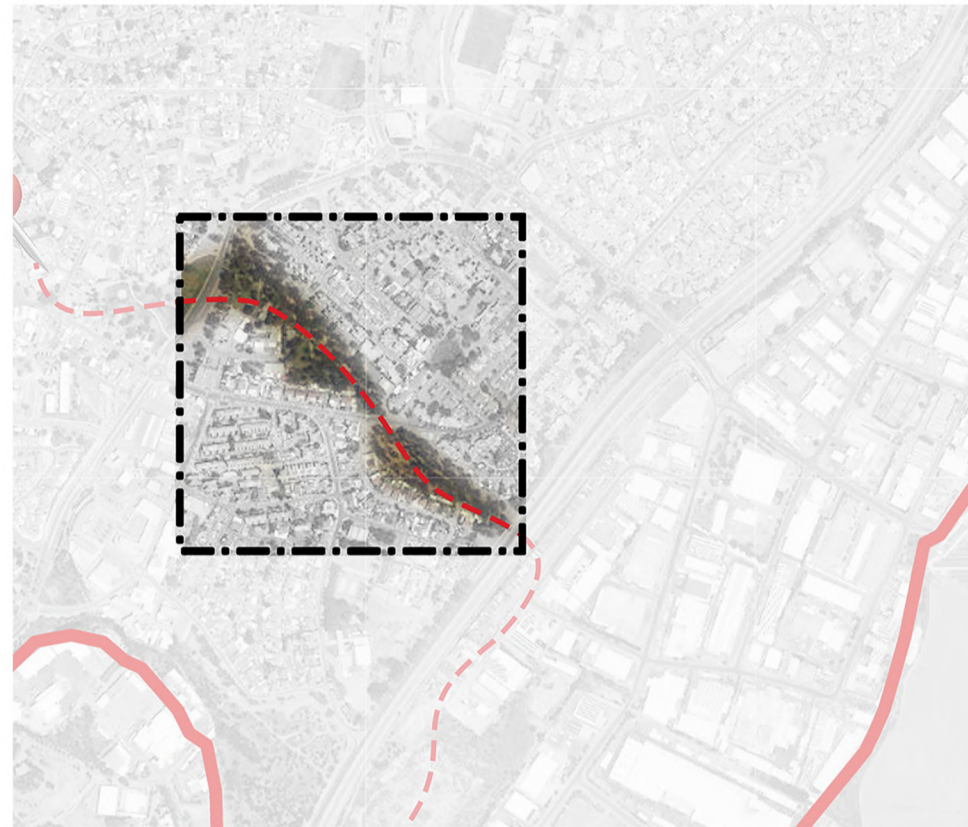
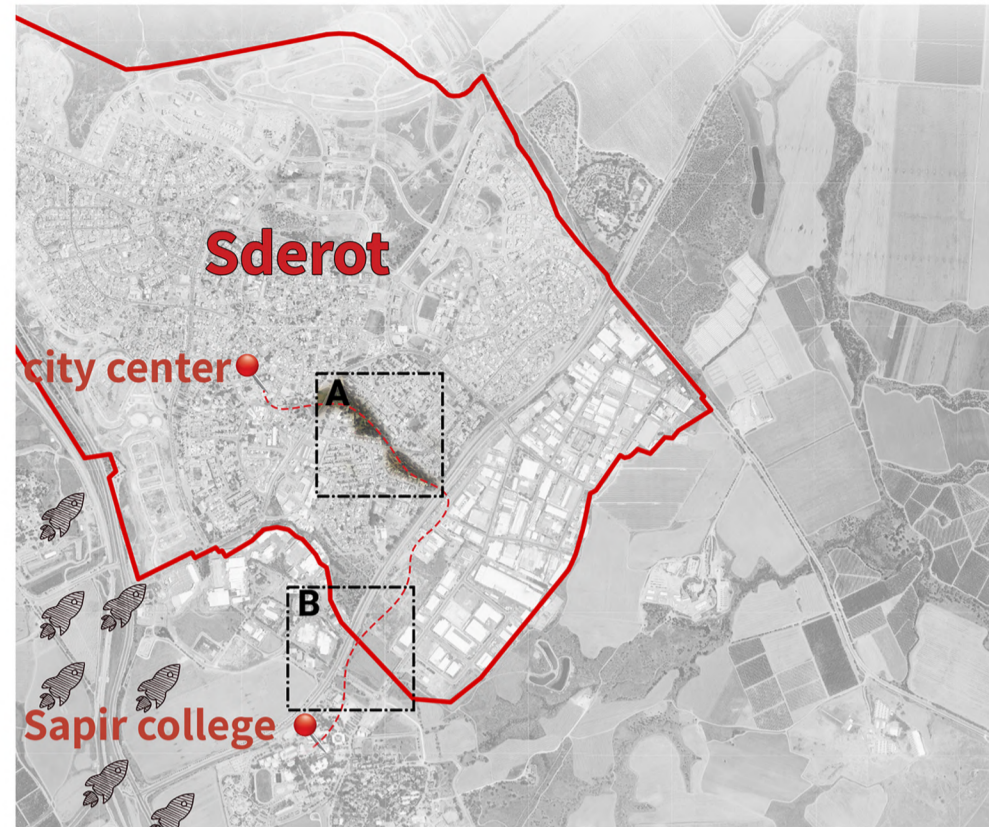


Code Red - civil-protective architecture

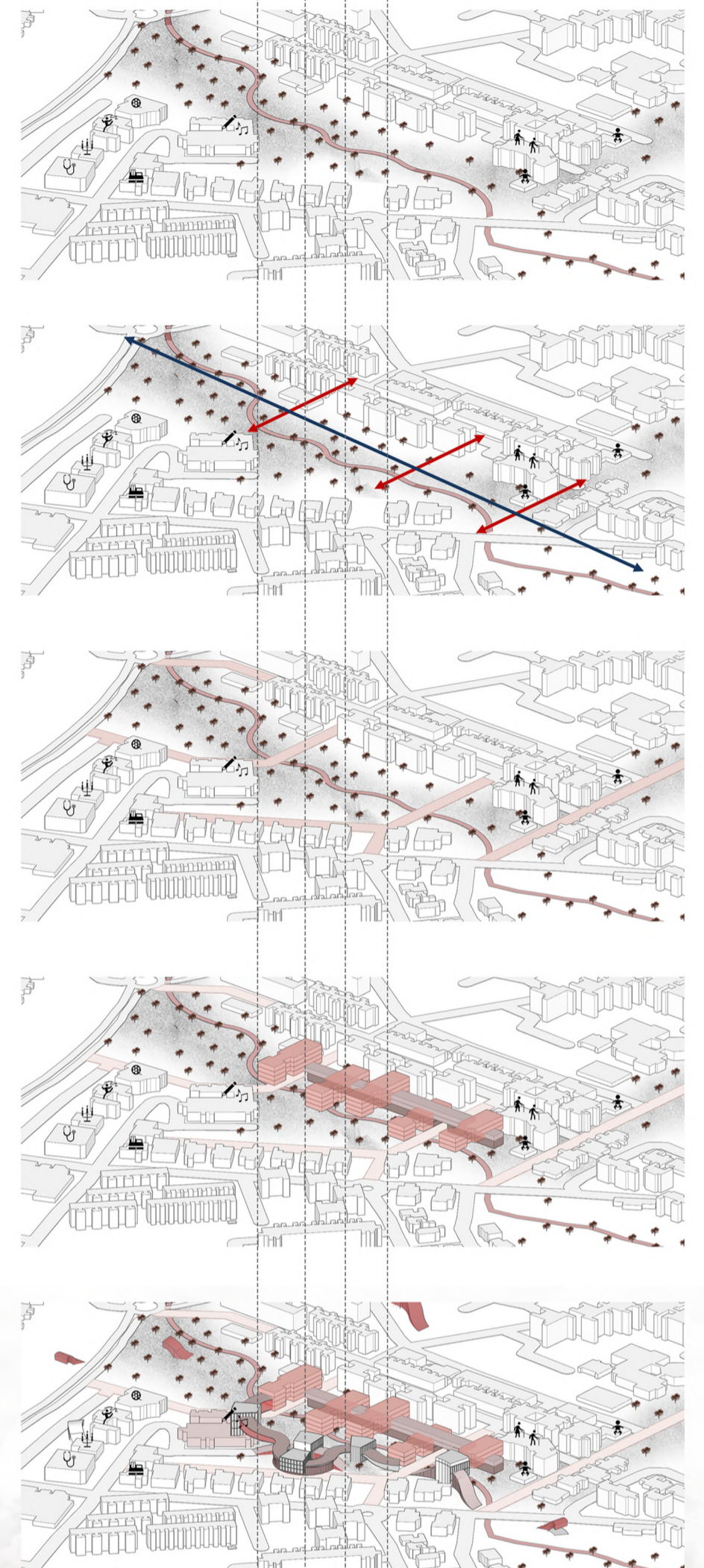
Project's Location

Alon Goldengoren

The project is located in an abandoned grove, connecting Sderot's city center to residential neighborhoods, while addressing the stream that crosses the grove



This is a scheme of the existing situation, in which one can see the abandoned grove interrupting the urban continuum with the stream in its center

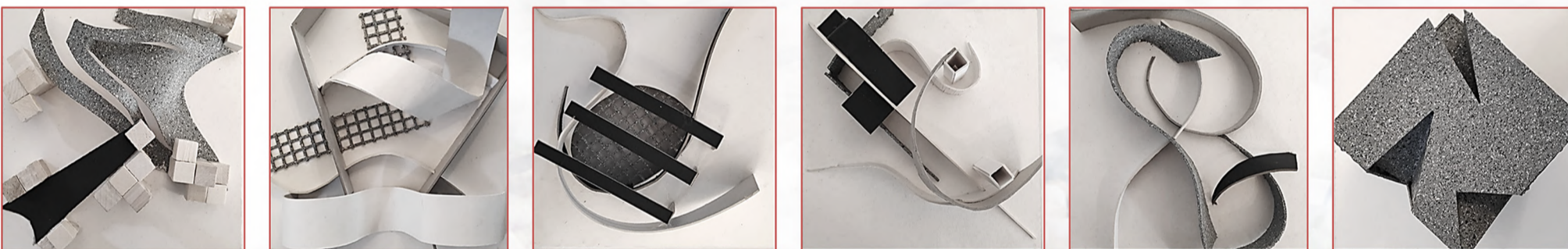


Today, the grove, instead of being a green vivid park, is the city's neglected "backyard" into which garbage is thrown



Shapes and forms in the project

From the beginning it was very clear to me, that I wanted to use flowing natural shapes in the project inspired by the natural shape of the stream that crosses the grove, to brake the stiffness concrete feeling of Sderot, and to create a sense of embracement and safety



I wanted to create connections between the neighborhoods on the stream's banks, by continuing the roads around the grove, and by creating a protective architectural complex, where normal life can continue even in an emergency

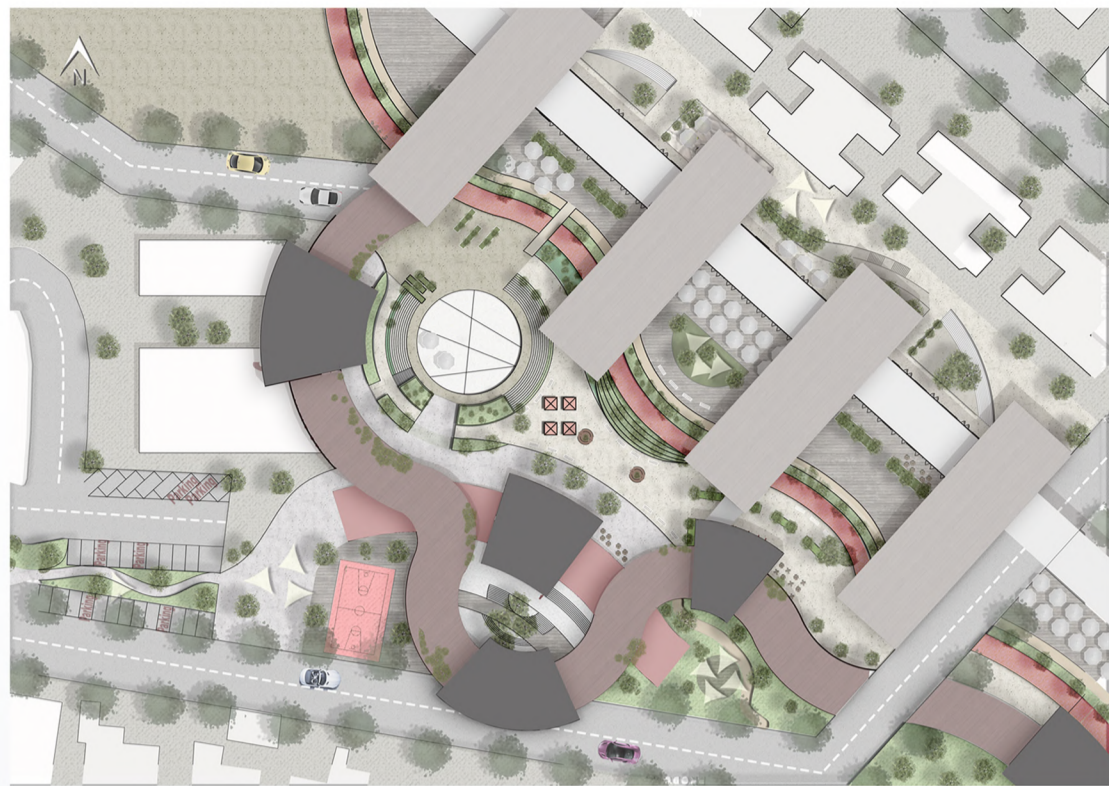


Code Red - civil-protective architecture

Interpretation of the typical Sderotian terraced housing

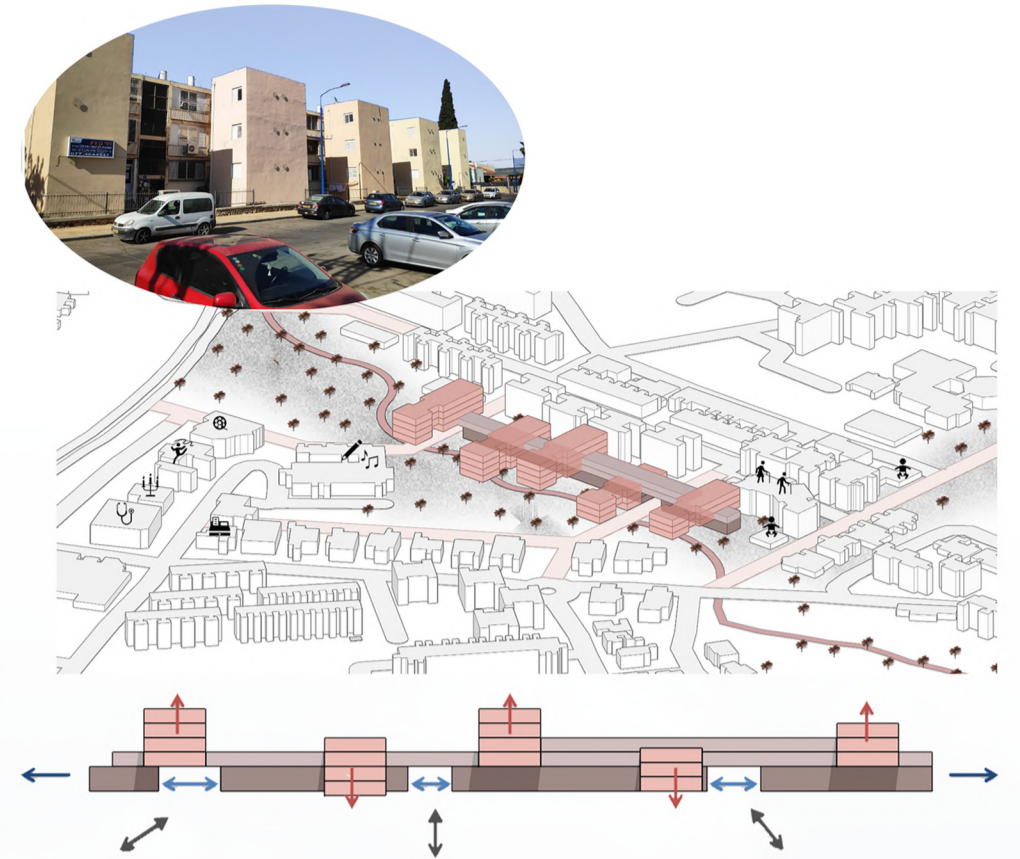
Alon Goldengoren

This is the residential scheme, in which I created a new interpretation to the typical Sderotian terraced housing

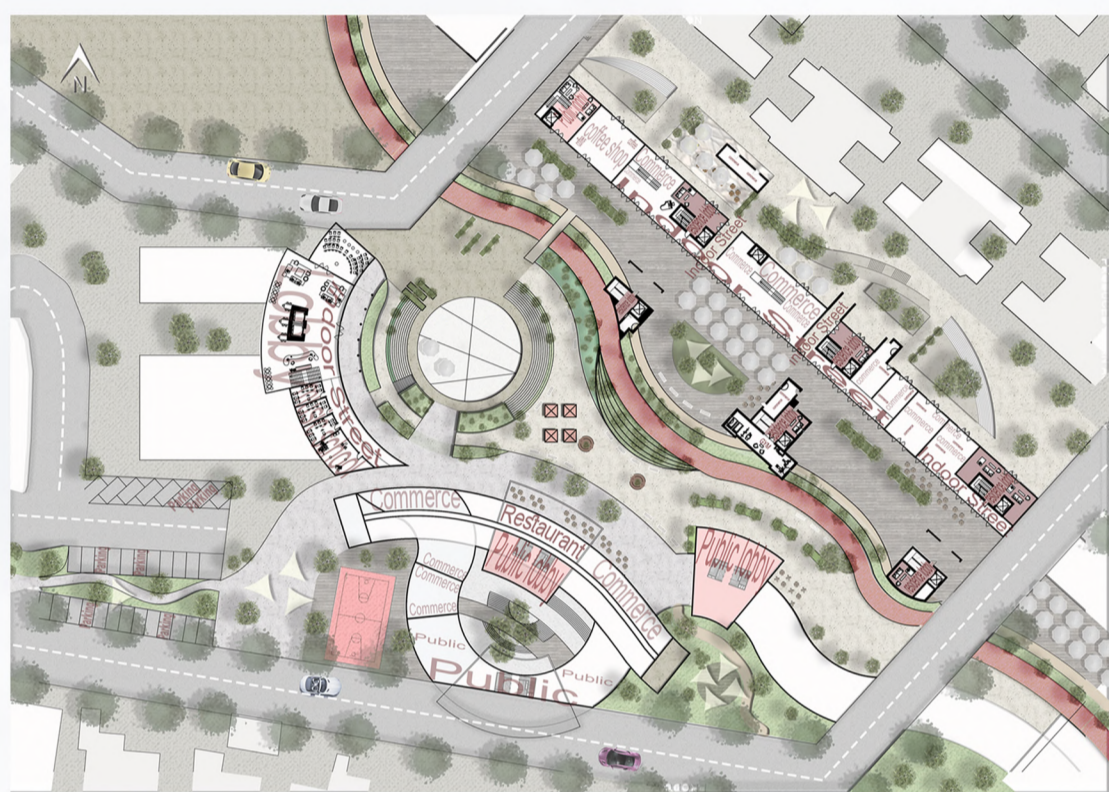


Roof-top Plan

This is the roof-top plan of the project, where you can see the shapes and forms used in the project, the green upper promenade and the square that is created between the two banks of the stream

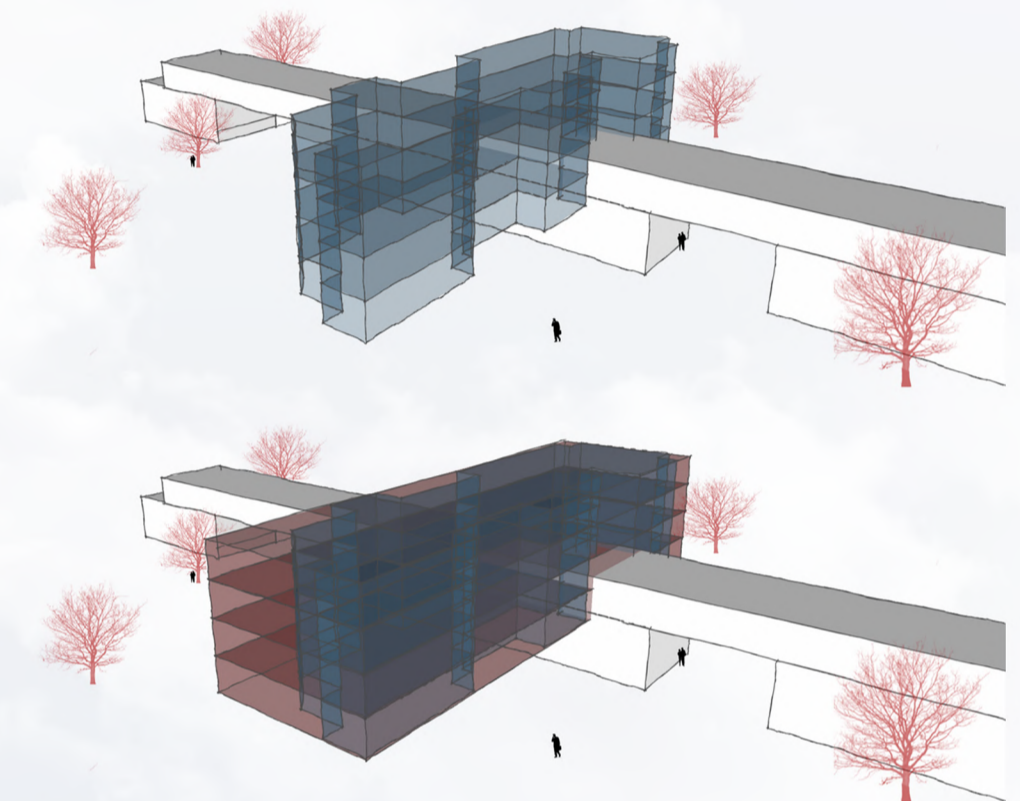


The new interpretation creates opportunities in the main square while bringing the neighborhood closer to the stream



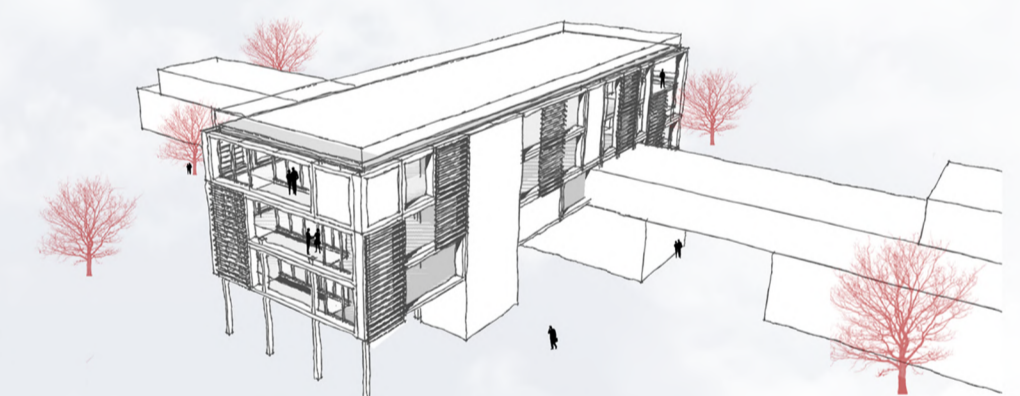
Ground floor Plan

This is the ground floor plan, which is a commercial floor on both banks. The "indoor street" runs along the floor, allowing a safe routine to continue even in an emergency



Typical floor Plan

This is a typical floor plan. The arrow marks the indoor street that passes between private and public functions in the project. The residential area in the project was also designed out of a desire to allow encounters and opportunities even in an emergency. Therefore I designed a shared protected space, big enough to allow long stays in it



The project proposes a new and more harmonious interpretation of Sderotian housing, by using layers that provide protection on the one hand, and disguises the shelters and concrete on the other hand. The rigid core, is disguised by layers made of different materials, like wooden shutters and metal grids, to create a more pleasant front



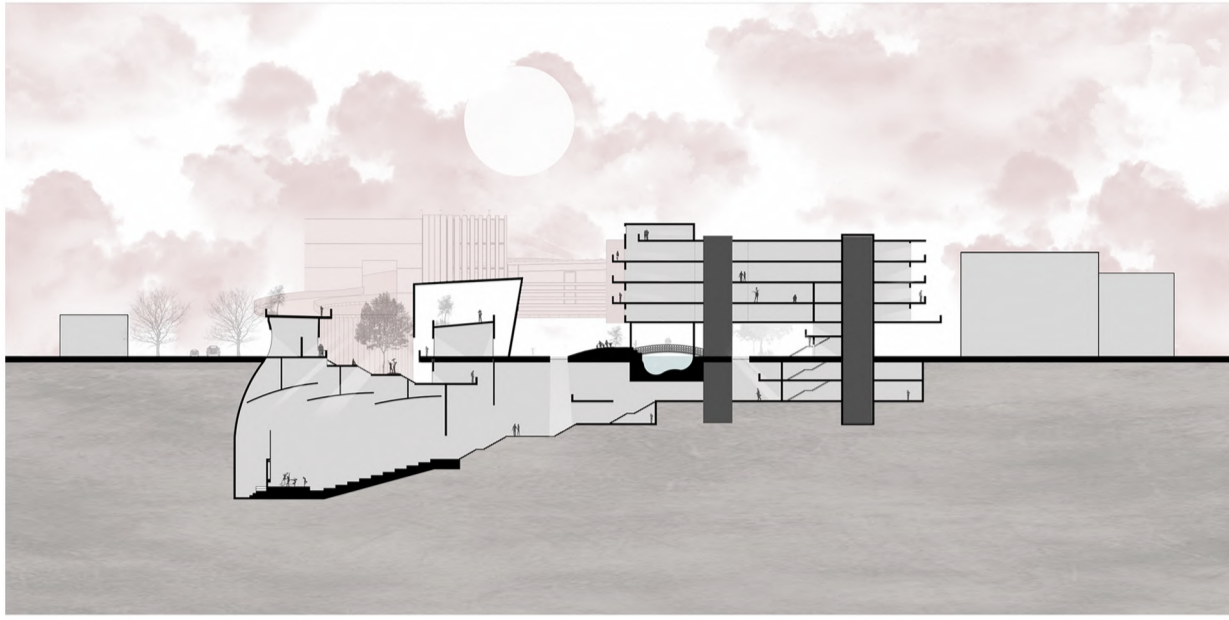
This is a look on the Sderotian residential building, where you can see the use of different materials that creates a harmonious front

Code Red - civil-protective architecture

The Snake Shaped Building

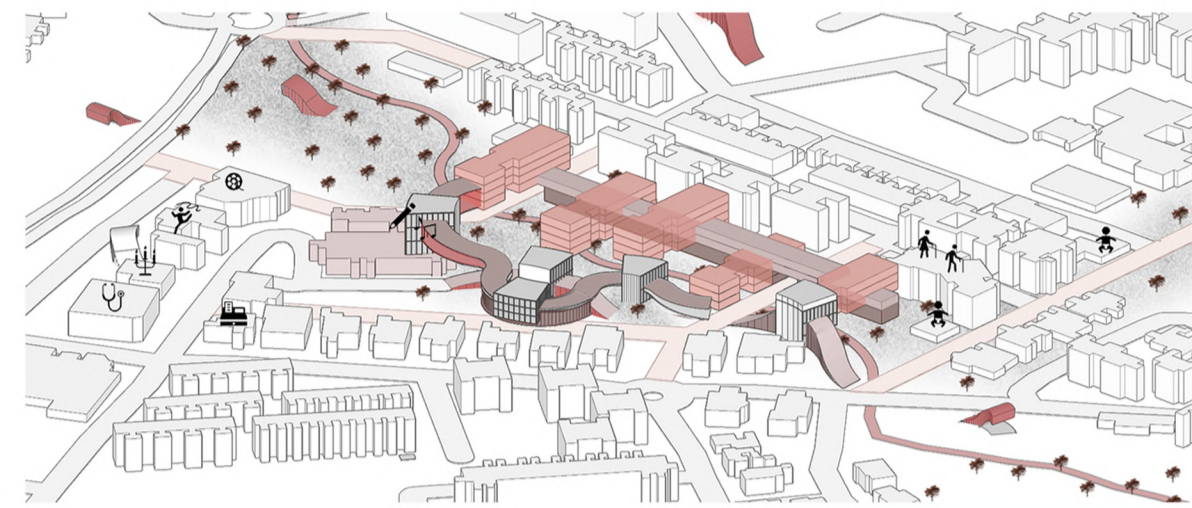
Alon Goldengoren

Sections



This section shows how cultural and commercial activities take place underground and therefore can continue even in an emergency

On this bank of the stream, there's a snake shaped building that corresponds with the natural shape of the stream as a ripple to its flow



In fact, all the protected spaces in the project have a use during peaceful times, and thus entering them in an emergency - does not stop the routine but continues it
In this section you can see how the outer street enters the building and continues inside it - as an indoor street



This is a look at the Music School building, which is also built out of layers and a mixture of materials to create a safe building on the one hand and harmony on the other
In the music school the wooden shutters and the grid are arranged

The same notebook graphical forms and use of materials - continues inside the building - in the library of the music school



Code Red - civil-protective architecture

Perspectives

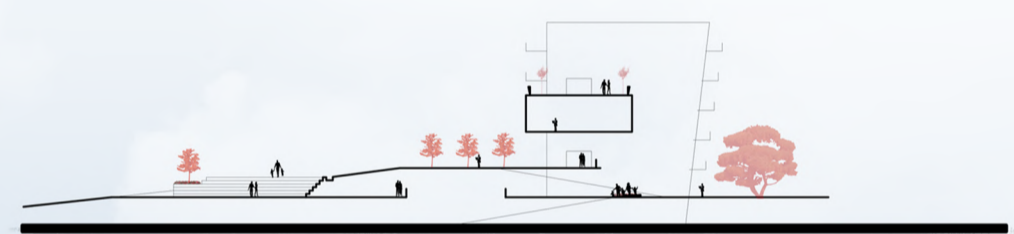
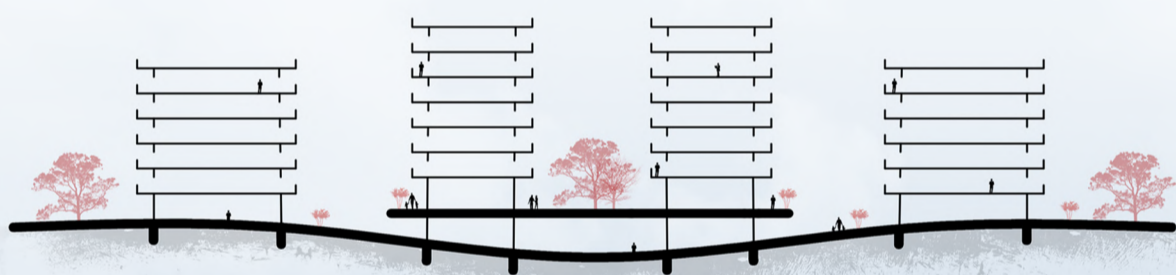
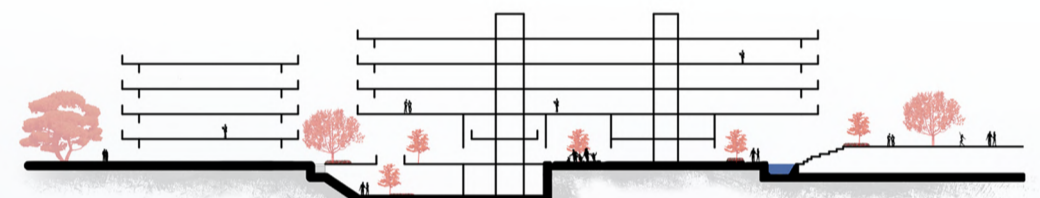
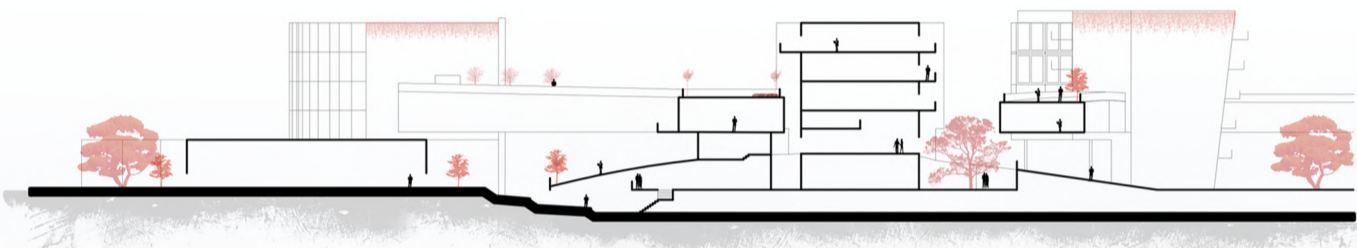
Alon Goldengoren



A view from the upper promenade to the square



A view of the renewed stream that has turned from a sad abandoned stream, into a green square full of life



These sections show how the neighborhoods surrounding the project can also use the natural topography created by the complex, to enter the complex and continue their routine in case of an emergency

A view of the new main square. A square that allows encounters and interactions in routine and in emergencies, and creates protected public spaces all around it

