

Reunion or Revolution

Recognizing the diverse familial configurations in Israel as a widespread phenomenon and unique social resource, providing a foundation for a novel and local urban environment, architecture and quality of life.

The characteristics of the "Israeli family" have changed, manifesting not only as a fixed nuclear unit, but as many diverse and dynamic familial configurations. The project views this growing phenomenon, shared in every ethnicity and built environment in Israel, as the rejuvenation of local traditions and values, and as a mechanism to withstand current social-economic challenges. Despite its prevalence and contributions, the phenomenon is yet to be addressed by the local planning authorities, who follow design paradigms which view the nuclear family apartment as the exclusive building and social unit. Through examination of both traditional local residential complexes, and contemporary local typologies, the project derives principles for designing diverse familial dwellings. These principles are implemented in an urban context through a proposed residential complex located in southern Tel-Aviv. The design forms the complex as an open urban system, connecting communal amenities and housing, and providing conditions for long term community and occupancy for its varied social groups

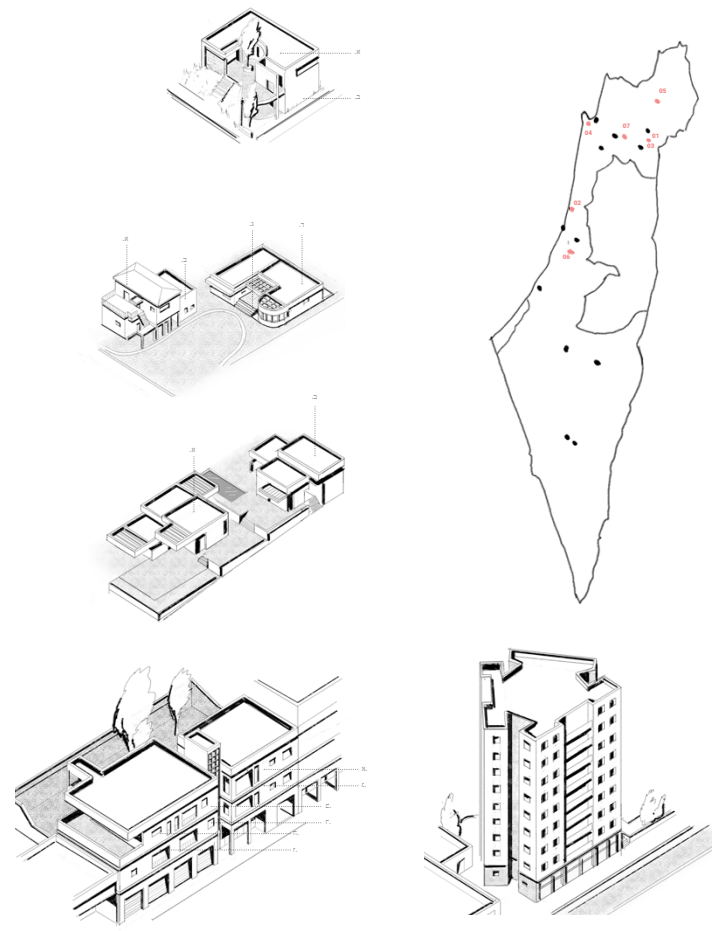
זהותה של המשפחה הישראלית השתנתה, ומתקיימת כיום לא רק כיחידה קבועה ומוגדרת, כי עם קשת של הרכבים משפחתיים וחברתיים דינאמיים. החיים במסגרות משפחתיות מגוונות מהווה תופעה רחבת היקף וחוצת-מגזרים בישראל, אולם כזו שאינה זוכה למענה מצד מערכת התכנון - המספקת מענה למגורים במסגרת המשפחה הגרעינית כדפוס מחיה בלעדי. מתוך זיהוי הפער בין שכיחות התופעה והיעדר מענה תכנוני לקיומה, מבקש הפרויקט לערער על הפרדיגמה המקומית האוחזת בשכפול הדירה "הטיפוסית-גרעינית" כפעולת התכנון המרכזית העומדת בלבה. באמצעות מיפוי טיפולוגי המשווה בין צורות מגורים עכשוויות לטיפוסי מגורים מסורתיים, הפרויקט מנסח עקרונות אדריכליים המהווים תשתית חדשה לתכנון מגורים, ומיושמים דרך תכנון מפורט של בלוק מגורים בשכונת שפירא. בתכנון המוצע נבחן המשאב המשפחתי כמוצא לארכיטקטורה חדשה ומערכת אורבנית פתוחה, המבקשת להקנות מסגרת מרחבית ייחודית, הנענית לאתגרי המציאות ולאורח חייהם של הרכבים חברתיים-משפחתיים מגוונים בישראל.

משפחה או מהפיכה

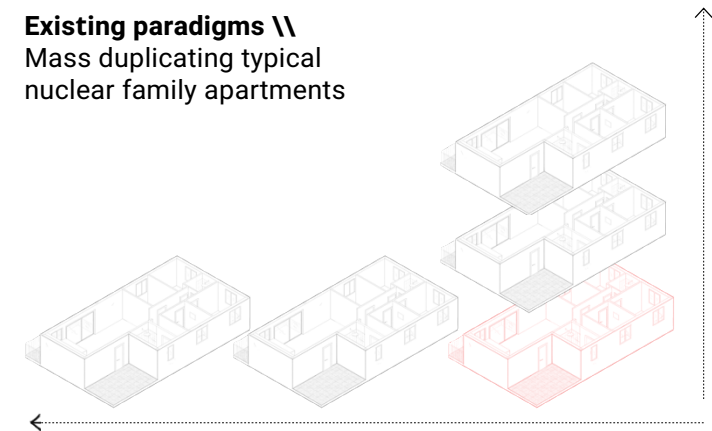
זיהוי מסגרות משפחתיות עכשוויות בישראל כמשאב חברתי, המערער על פרדיגמות במנגנון הדיור הקיים ומהווה תשתית לארכיטקטורה וצורת מגורים מקומית חדשה.



Existing Familial dwellings \ viewing the nuclear family apartment as the exclusive building and social unit.



Existing paradigms \ Mass duplicating typical nuclear family apartments



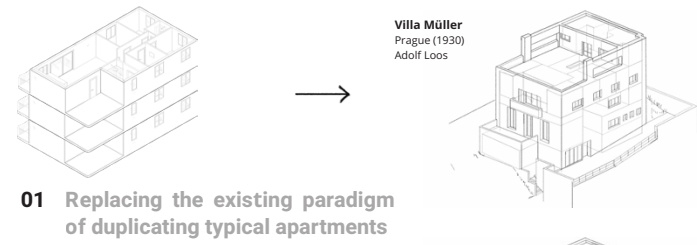
The "nuclear family apartment" as the prevailing building block in all contemporary residential typologies



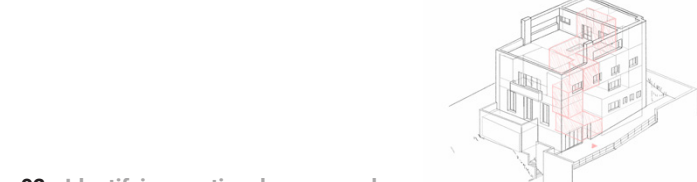
Contemporary residential typologies



The Familial Foyer \ A unique urban space which functions as central building unit of the project- connecting between dynamic familial communal life and surrounding urban activities



01 Replacing the existing paradigm of duplicating typical apartments



02 Identifying continual-communal spaces within Loos's Raumplan



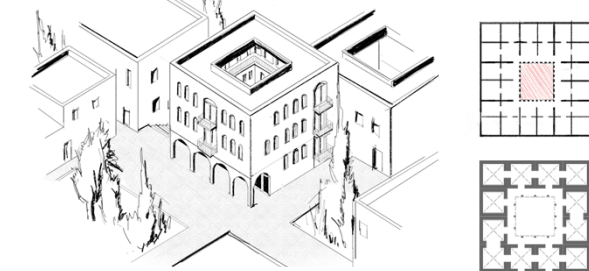
03 Opening the closed building envelope



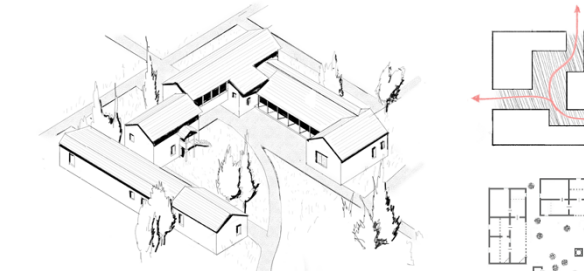
04 Creating a central open foyer



Urban estate



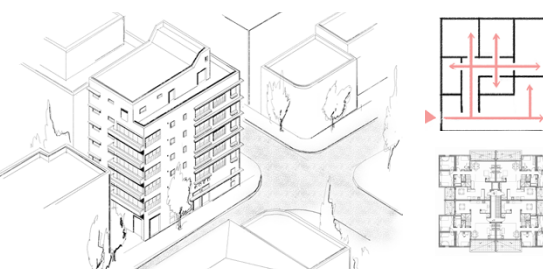
Liwan house



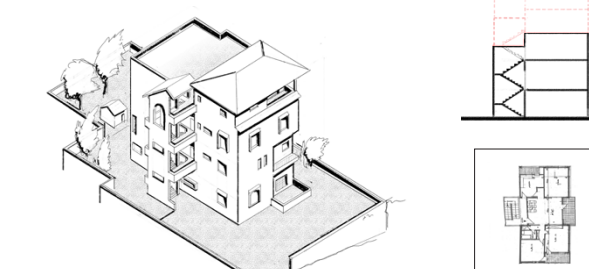
Rural courtyard complex

Traditional local familial complexes

Contemporary local typologies



Residential Tower



Urban-modern arabic complex

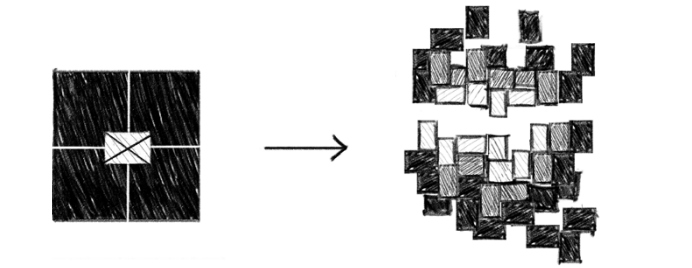


Cottage apartments

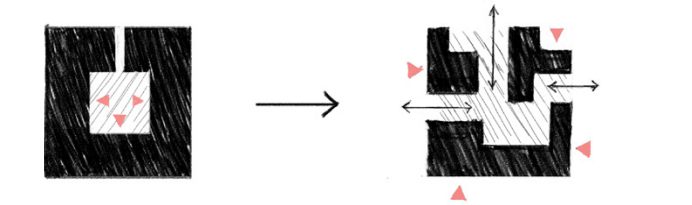
Principles for designing diverse familial dwellings \ Based on the architectural-social research, six design principles were derived as a foundation for providing the tenants, the existing statutory system and the architects with the means to examine and house contemporary familial configurations.



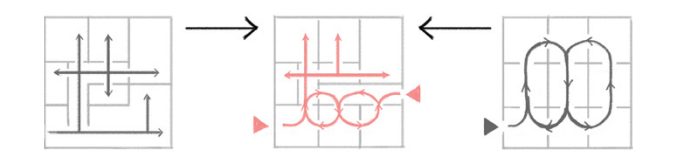
01. Familial and urban interfaces



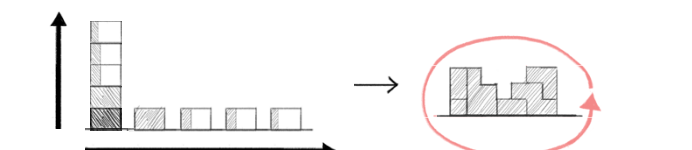
02. The room as a primary living unit



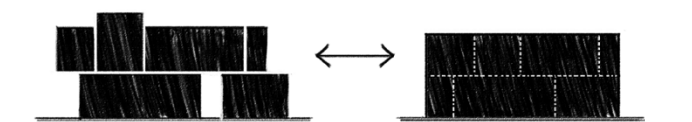
03. Interface between communal and public



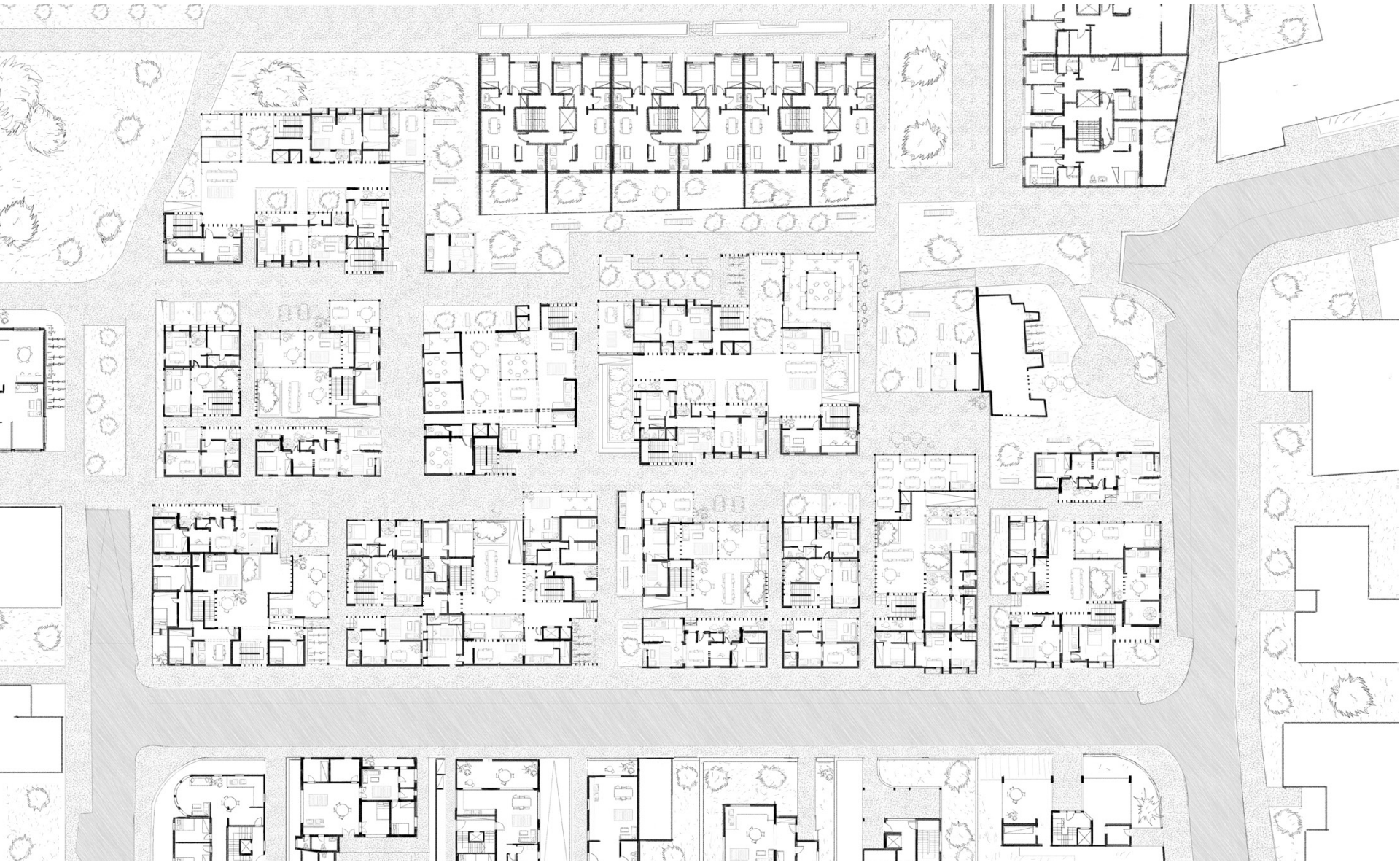
04. Hybrid interior arrangement



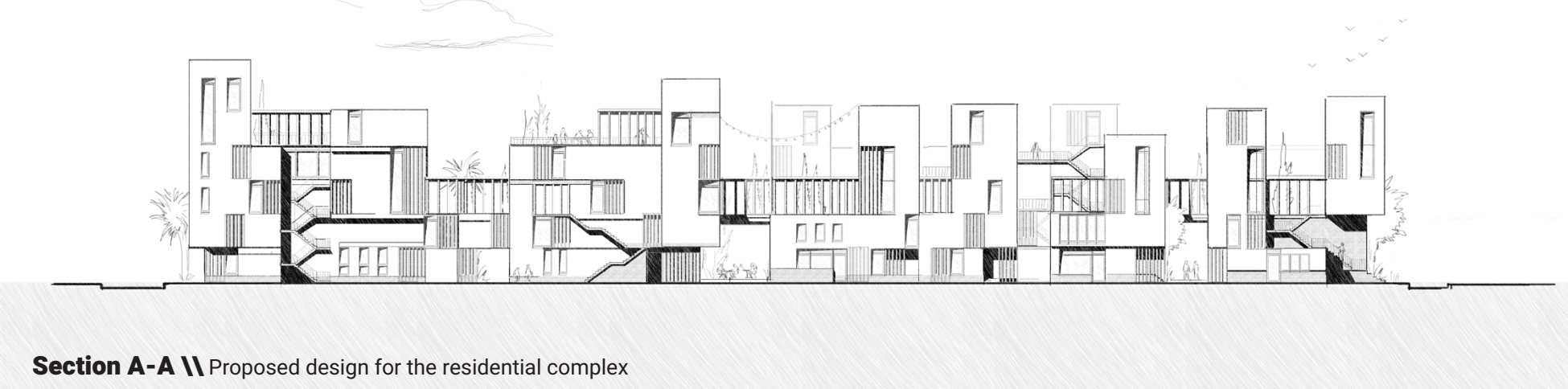
05. Swapping over Sprawling



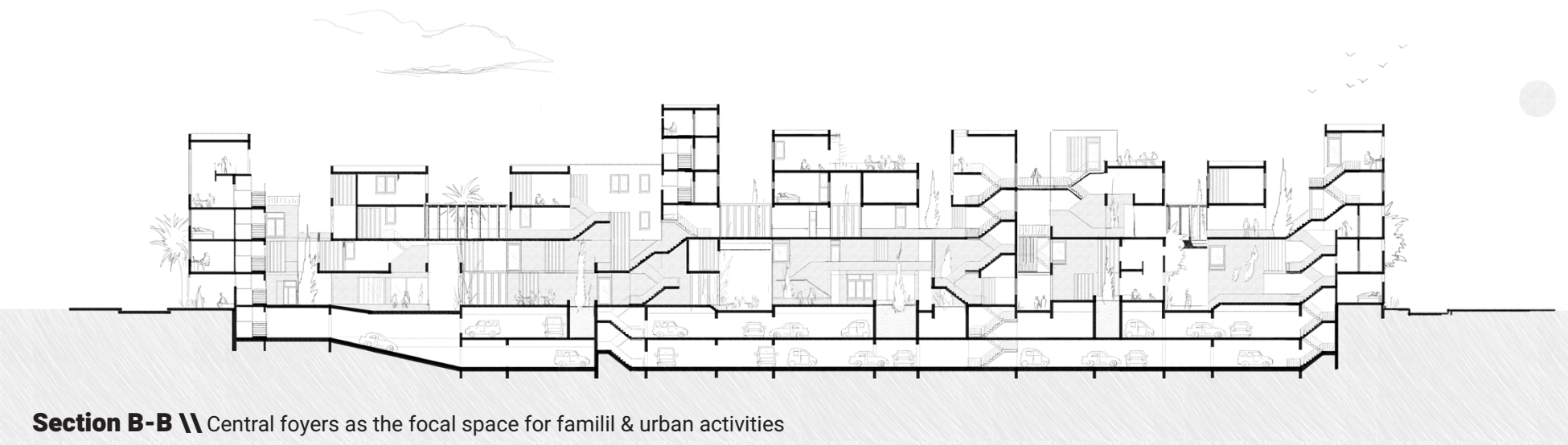
06. Unique/unified scale



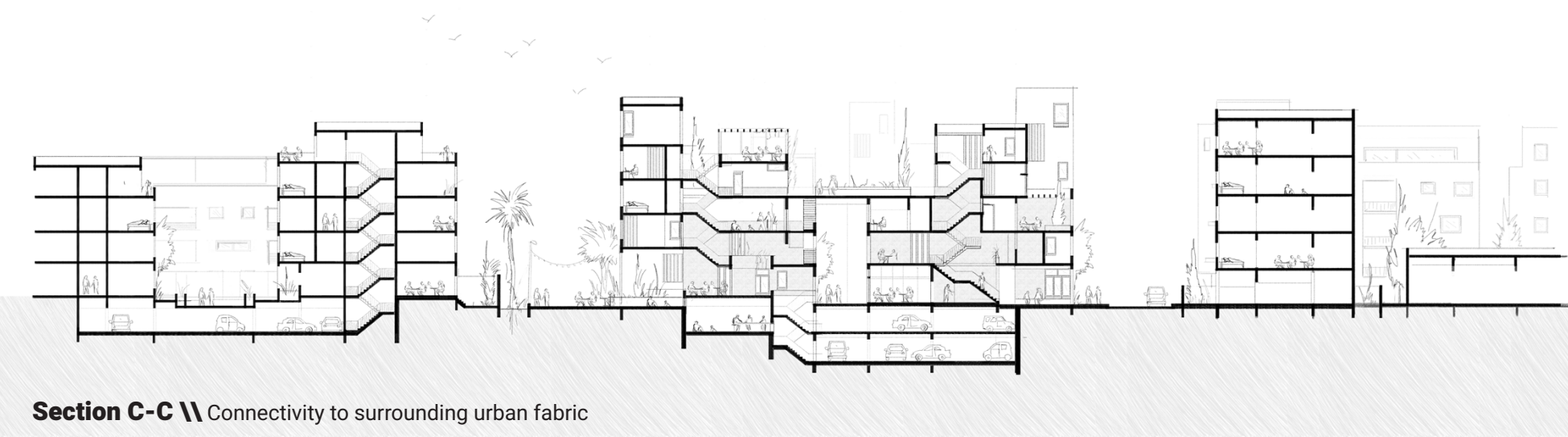
Ground Plan \\ The residential block as an open urban system



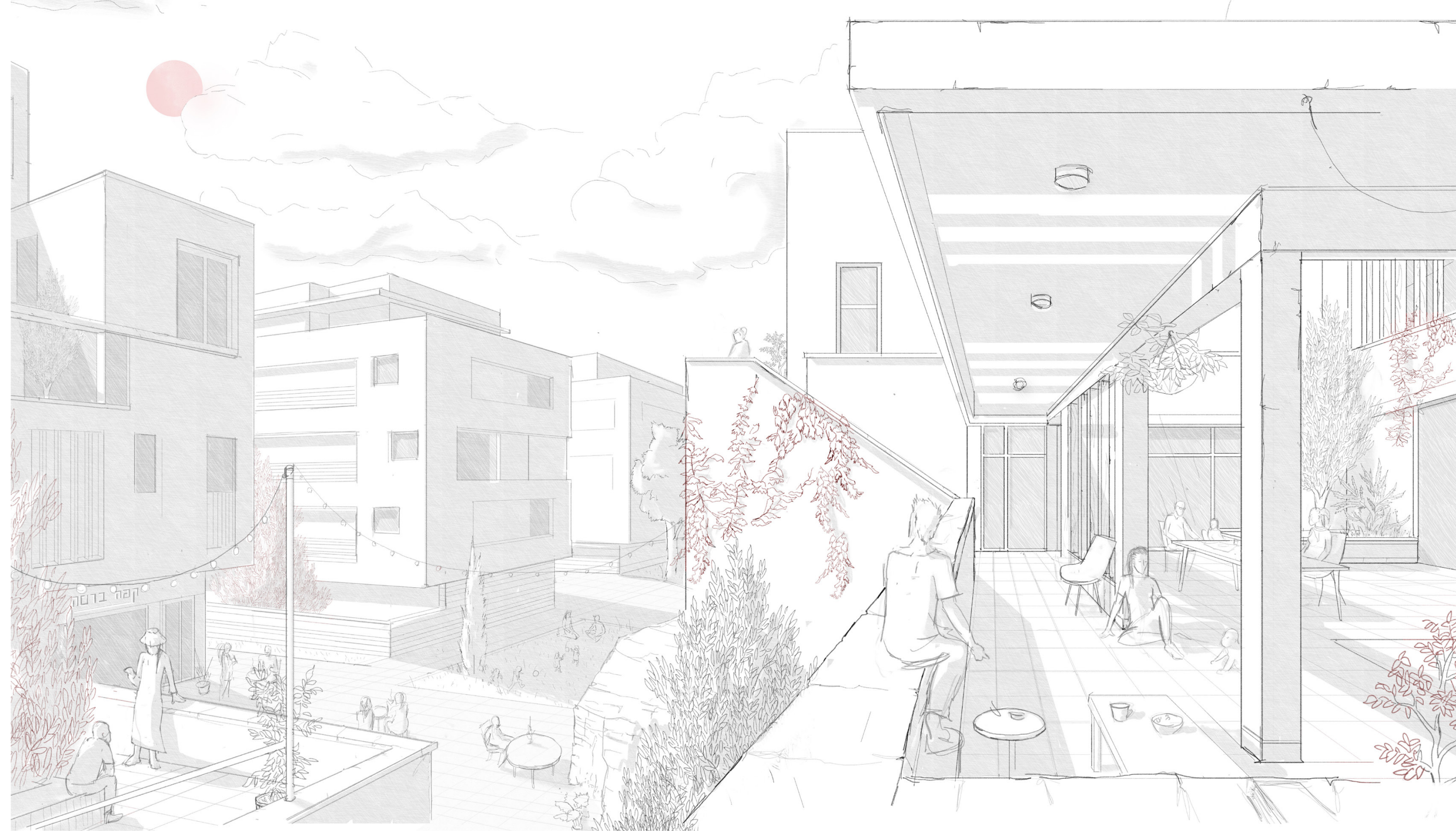
Section A-A \\ Proposed design for the residential complex



Section B-B \\ Central foyers as the focal space for family & urban activities



Section C-C \\ Connectivity to surrounding urban fabric



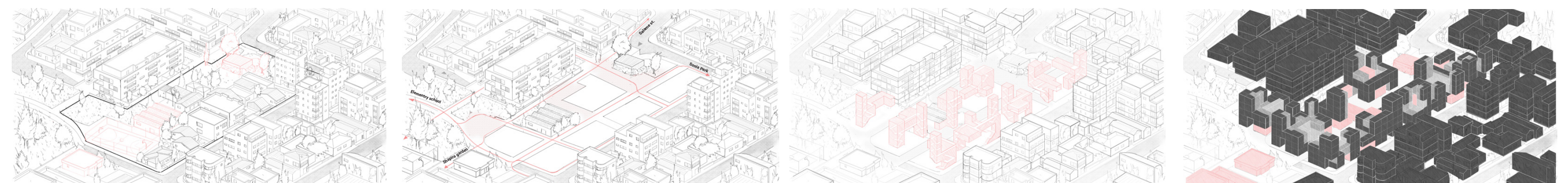
Connectivity to surrounding urban fabric \\ Urban activity as an integral part of the dynamic family life style

Hybrid building technologies

Providing both constant spatial values and flexible areas for adaptation



Isometric view (south-west) \\ Connecting the proposed complex to the surrounding urban fabric through rejuvenation of public centers and paths



\\ boundaries and preserved urban amenities

\\ Movement

\\ Familial foyers

\\ Private - Public

■ Private ■ Semi-Private ■ Communal ■ Public