

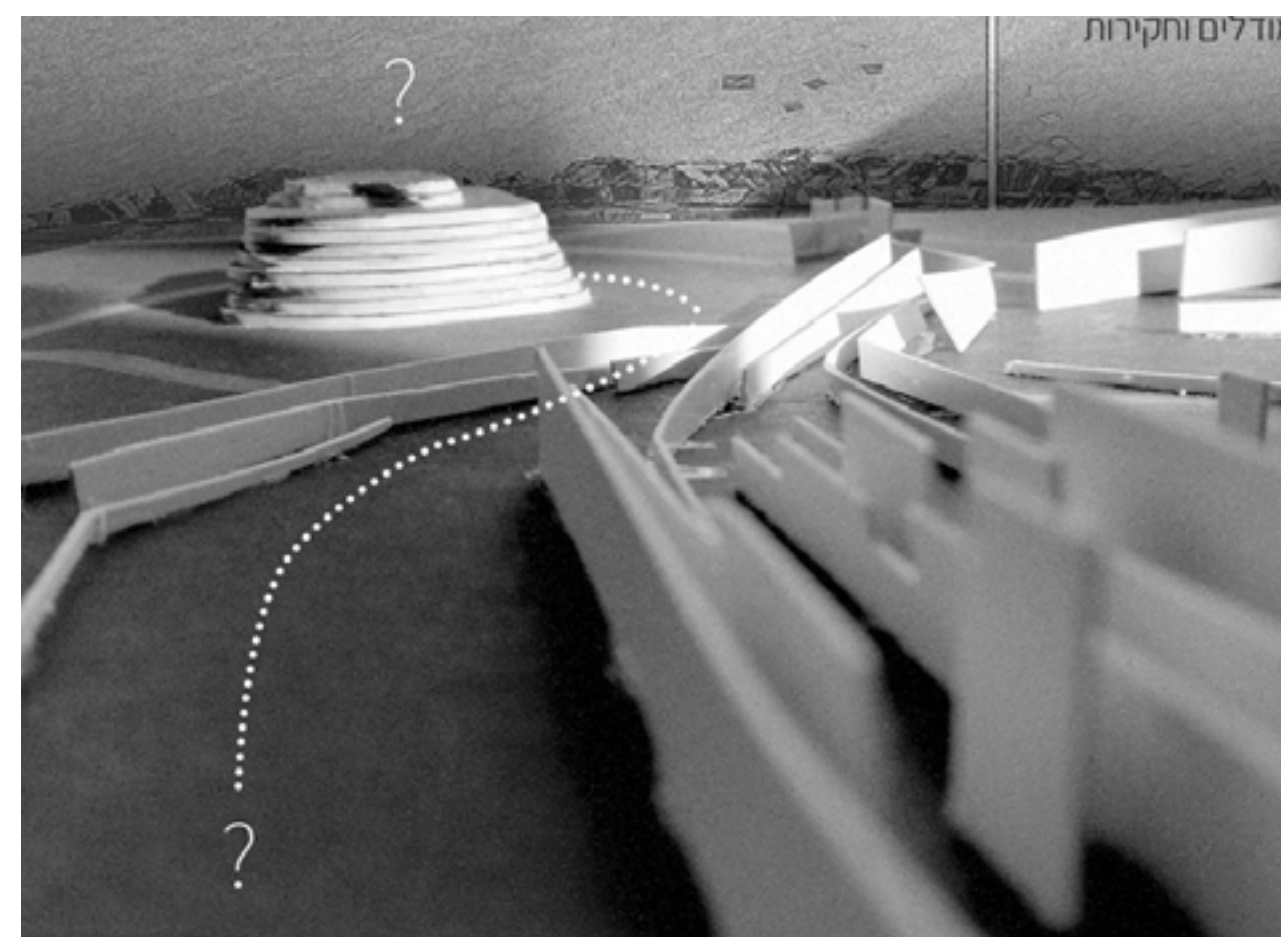
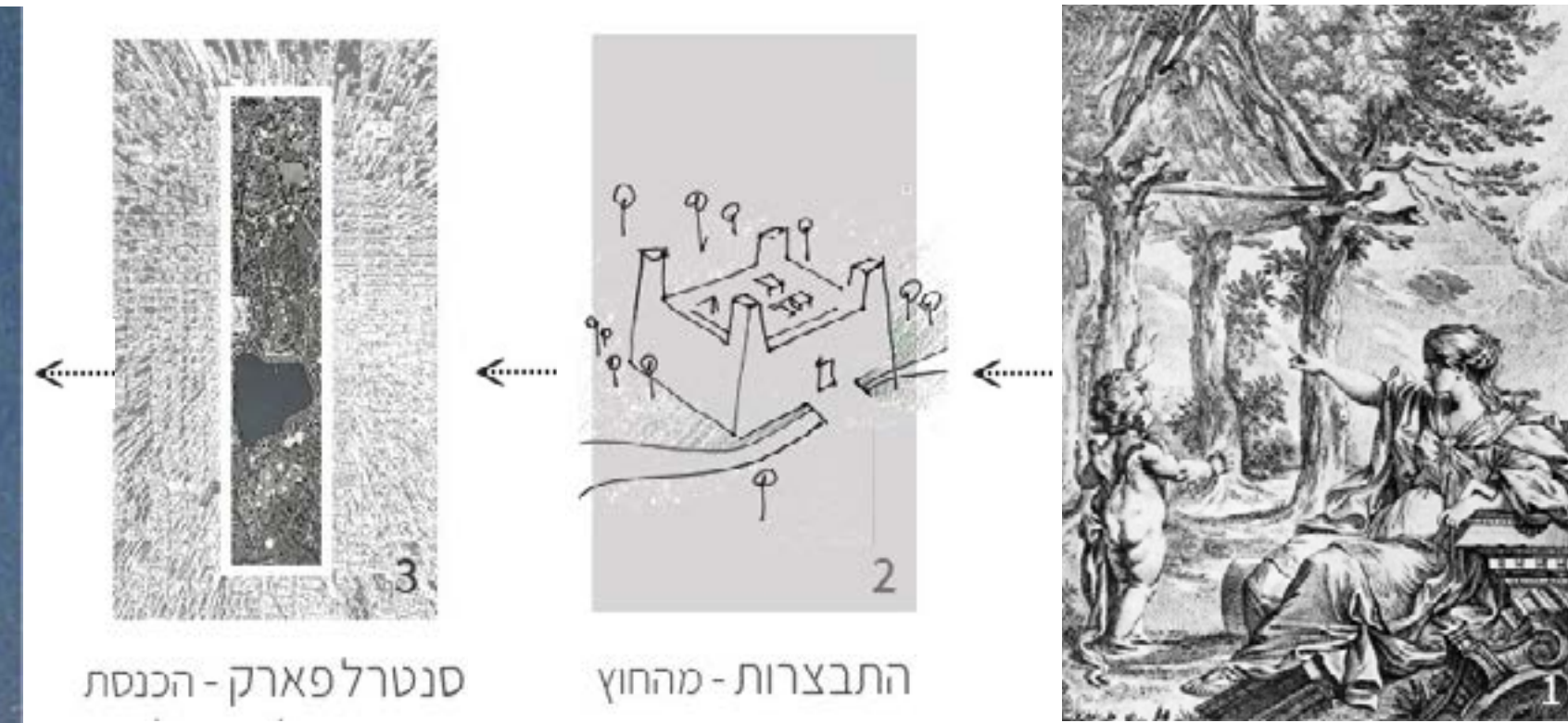
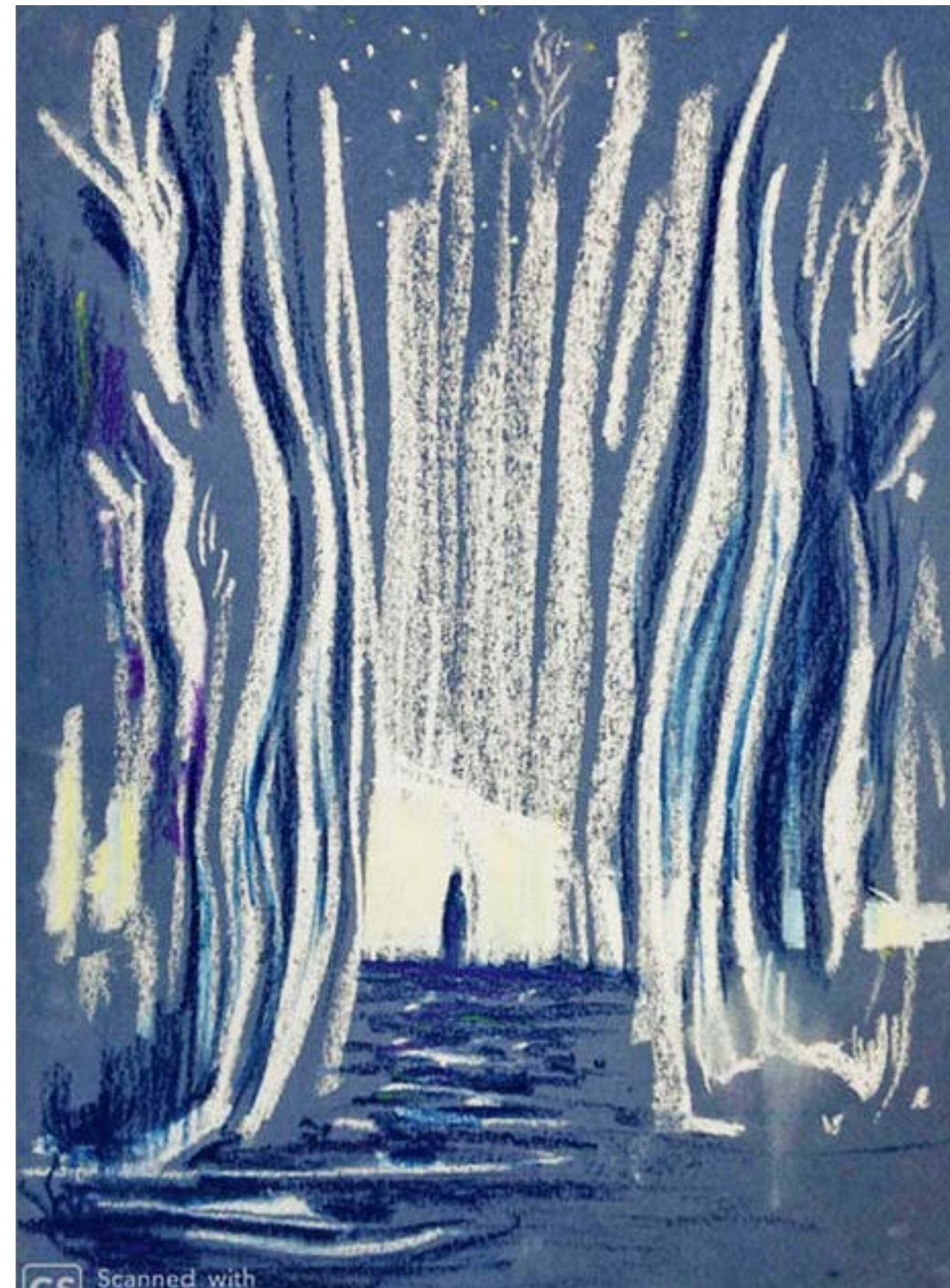
"AS A GUEST IN NATURE, I WAS"

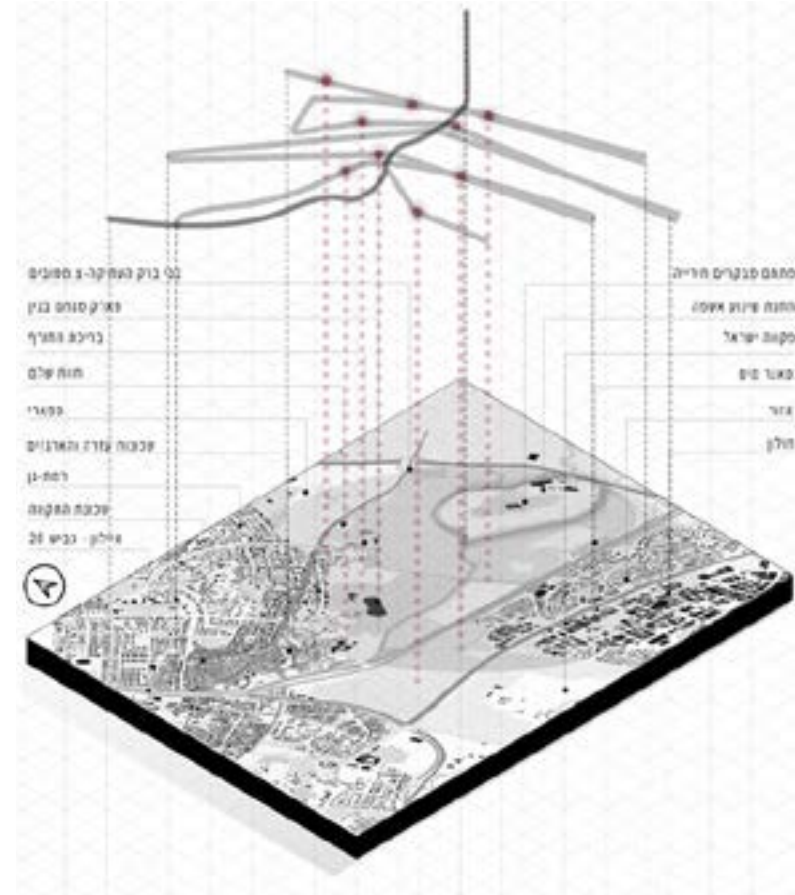
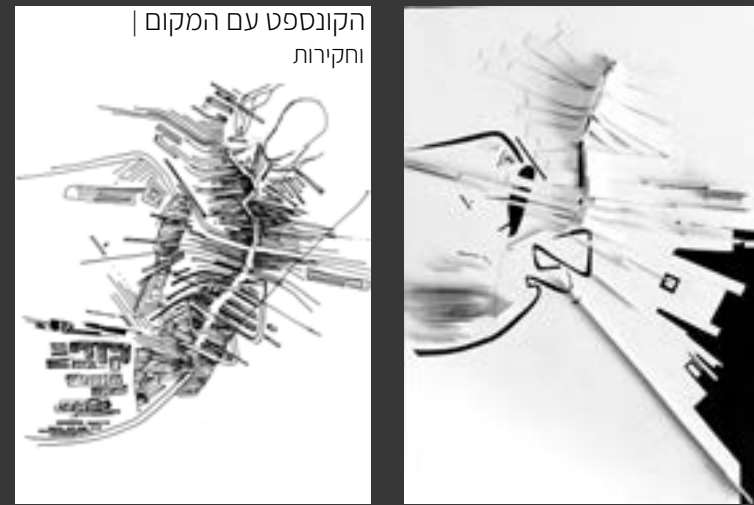
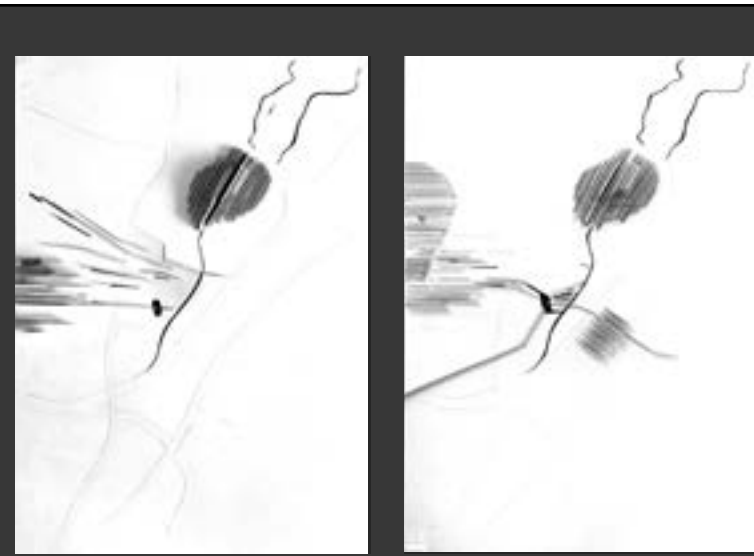
Hiriya and the Ramat Gan threshold



Yarin Meir

This project deals with the ethics and conflict between construction and the outside world – i.e., nature. In every period and in every culture, architecture reflected this relationship with nature, which seems to be getting worse as time goes by. I chose to examine the issue of this attitude in Hiriya park, the symbol of how we, as a society, treat the environment that includes a man-made Waste mountain, a city threshold (Ramat Gan), and a stream that runs between them (Ayalon) as a connecting element in this unique open space. Today there is a noticeable dissonance between these extreme situations and the solutions proposed so far has been implemented only at the top of the mountain – the development of Ariel Sharon Park.





על המקום | קיים - הר חירייה

The place

The Hiriya mountain? To define the absurd: "The confrontation between the irrational and the insane pursuit of clarity whose reading resonates in the human heart." Indeed, clarity and Hiriya are an oxymoron.



- C - מקטע ההר**
 חפירה בתוך ההר, זיכרון, מוזיאון לתערוכת הקשורות לתרבות הצריכה
- B - מקטע הפארק והנחל**
 מקשר בין העיר לטבע. הסטת הנחל ליצירת בריכות טבעיות
- A - מקטע סף העיר והפארק**
 עיבוי סף רמת גן וחיווק צירים קיימים



ניתוח חירייה וסביבתה | ייחודיות המקום



מבט אל התצפית של פארק אריאל שרון



ניתוח חירייה וסביבתה | מבטים מתוך פארק אריאל שרון בפסגת ההר

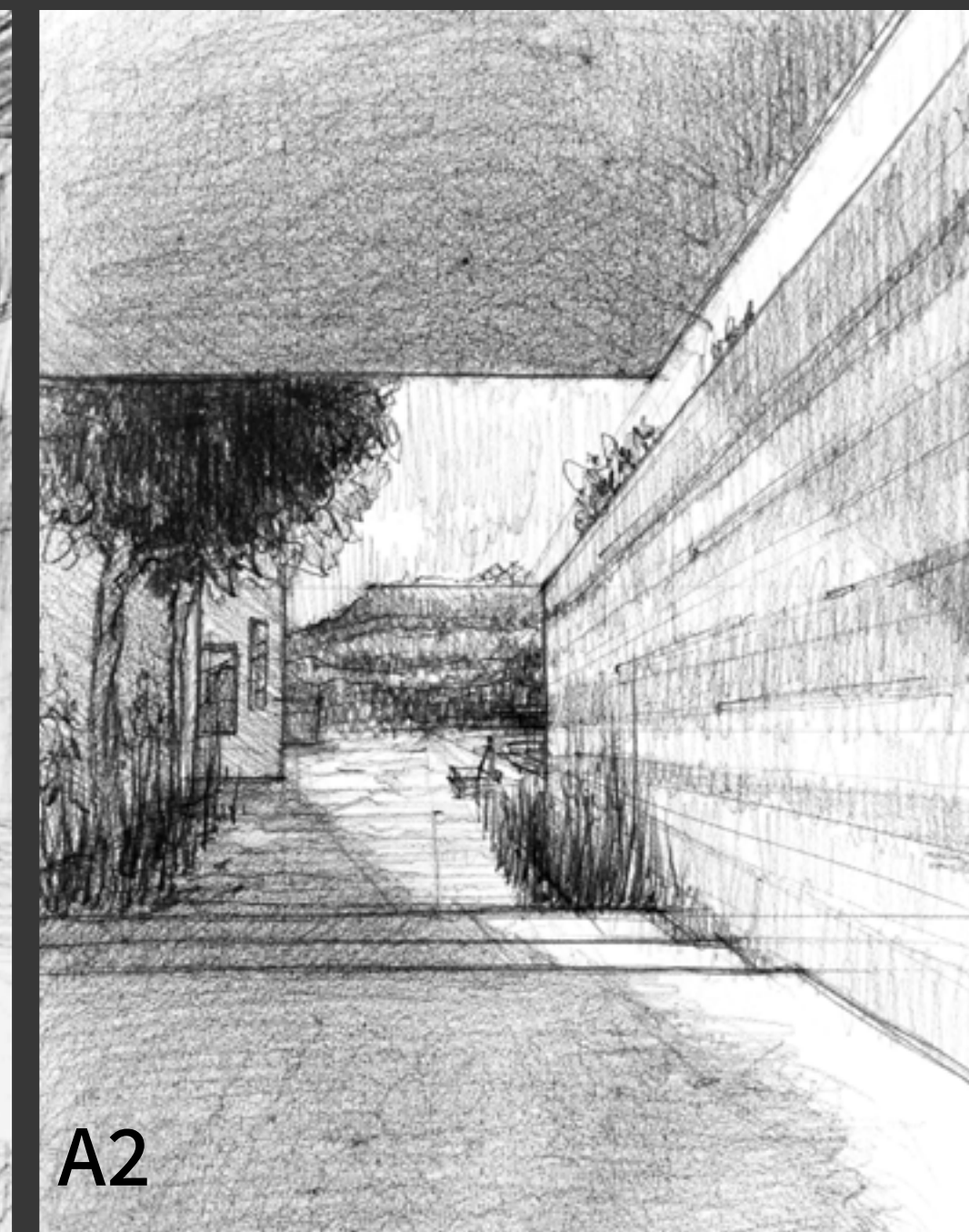
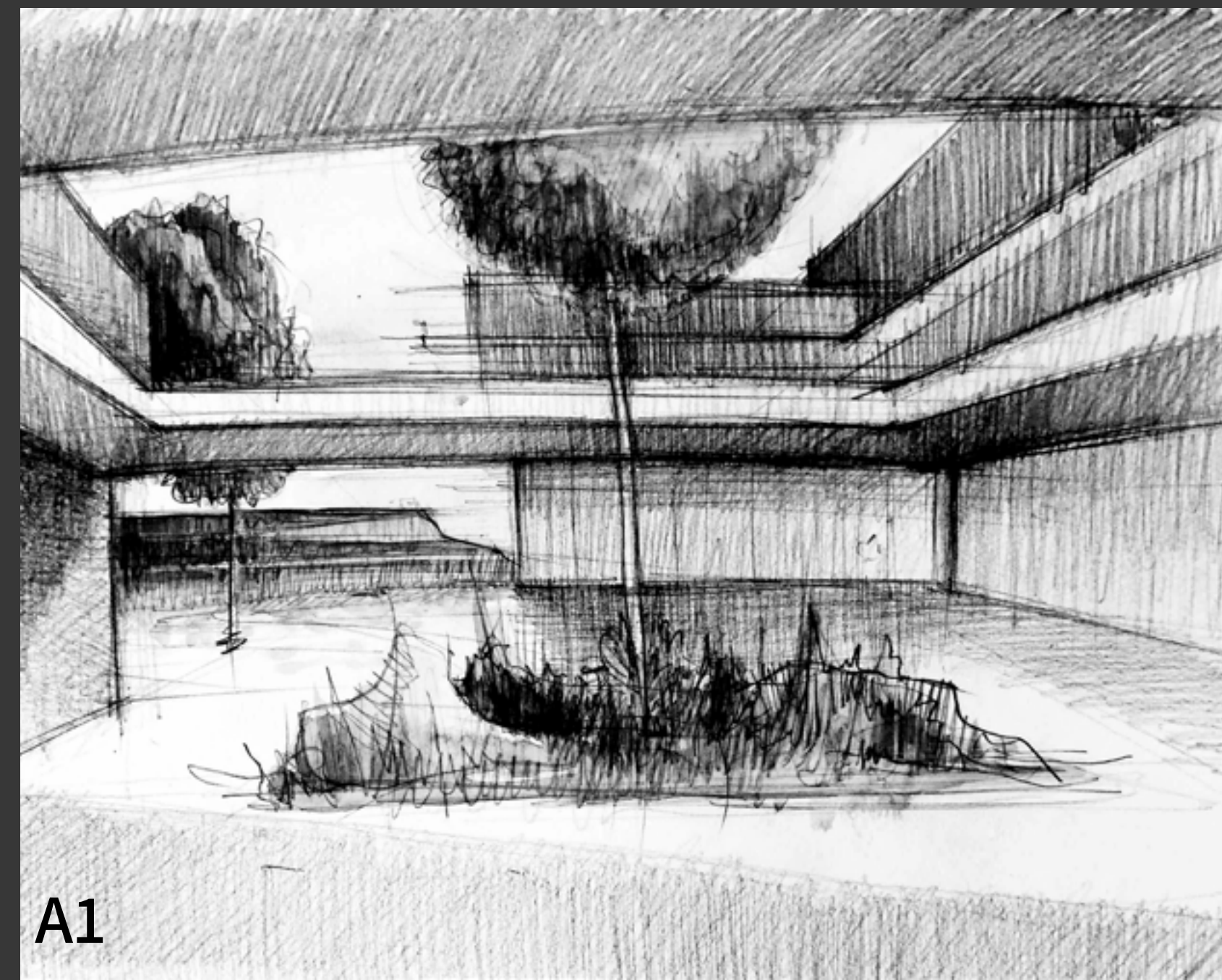


מבט מהתצפית אריאל שרון לתל אביב והים

The proposal in this project

seek to constitute a new ethical and spatial formulation for each of these elements (Waste mountain, city threshold, stream), and create "a whole" complex that reflects the proper relationship between city and park and above all between humans and a park environment.

מבט אל הבריכה שנמצאת בפסגה על פארק אריאל שרון כ-75 מ' מעל פני האדמה



A a city threshold (Ramat Gan)

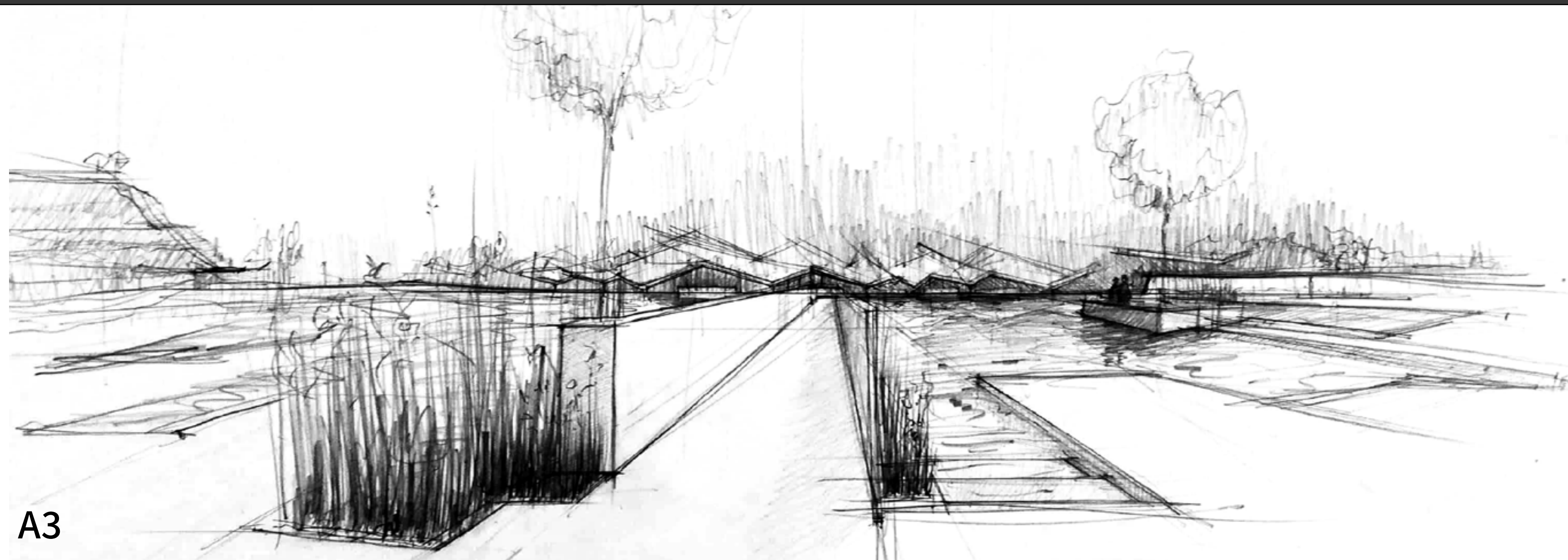
- The outskirts of the city: beginning with edge cases that strengthen the main arteries of the city and cycle back to the park environment.

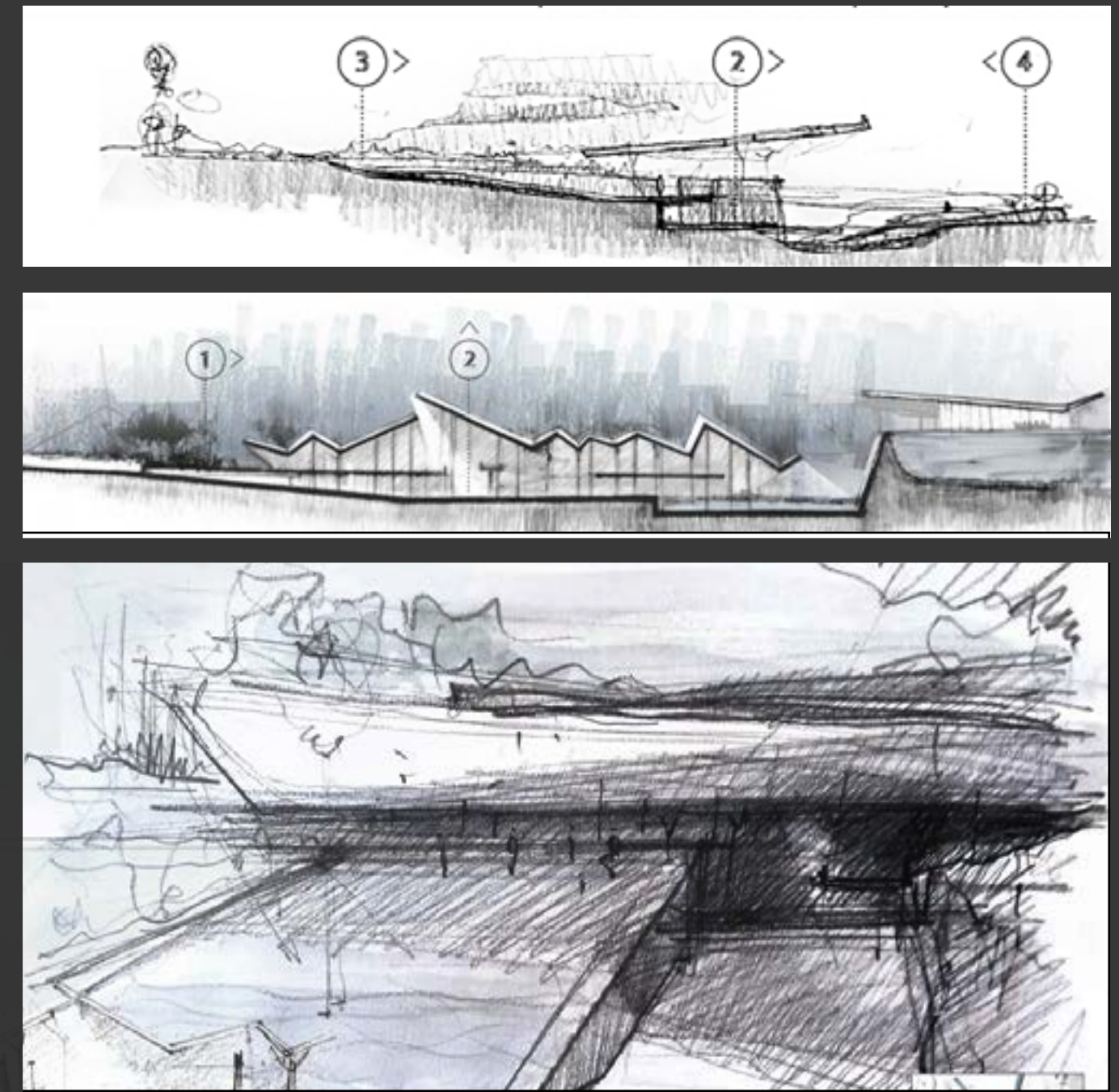
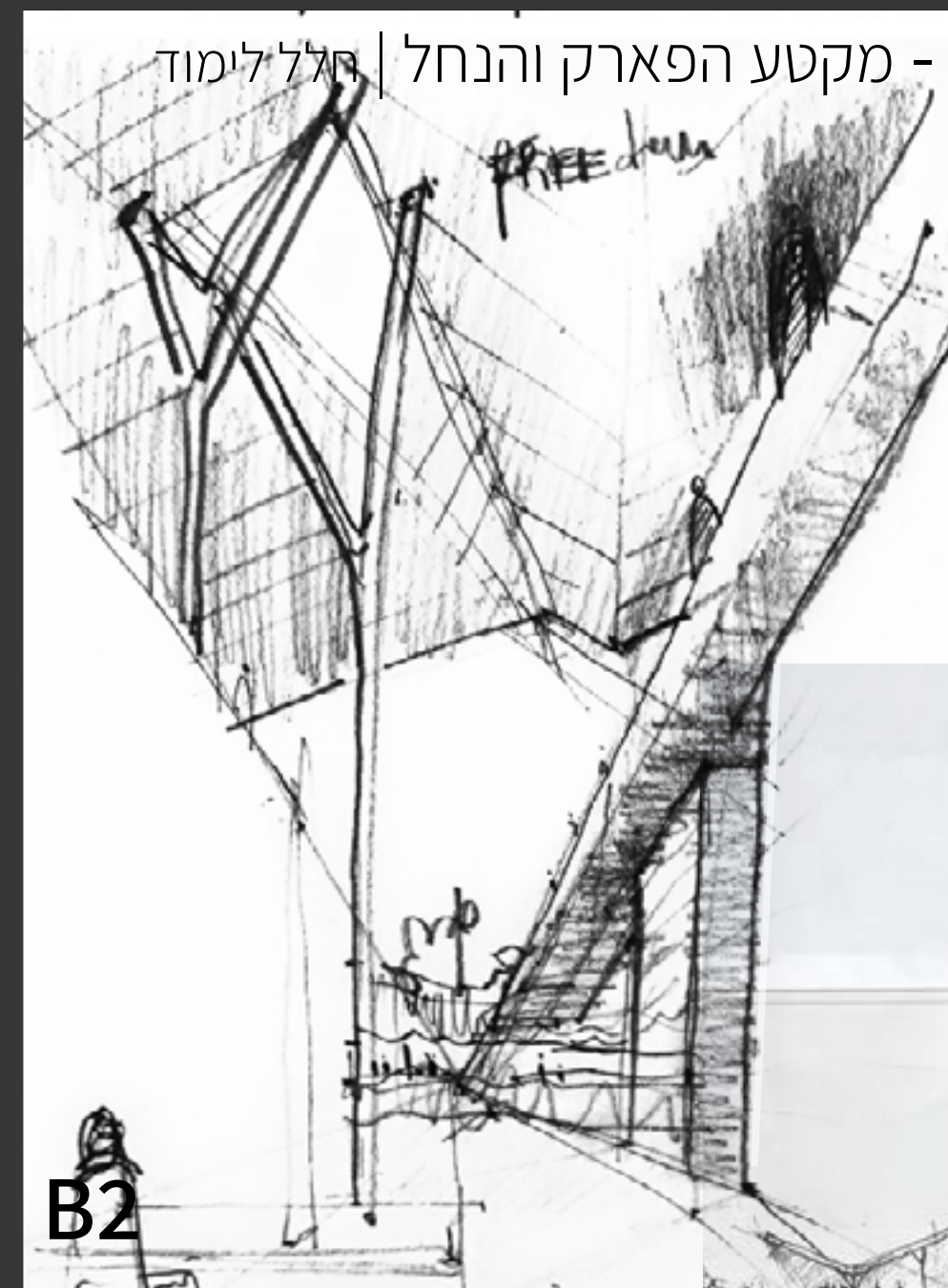
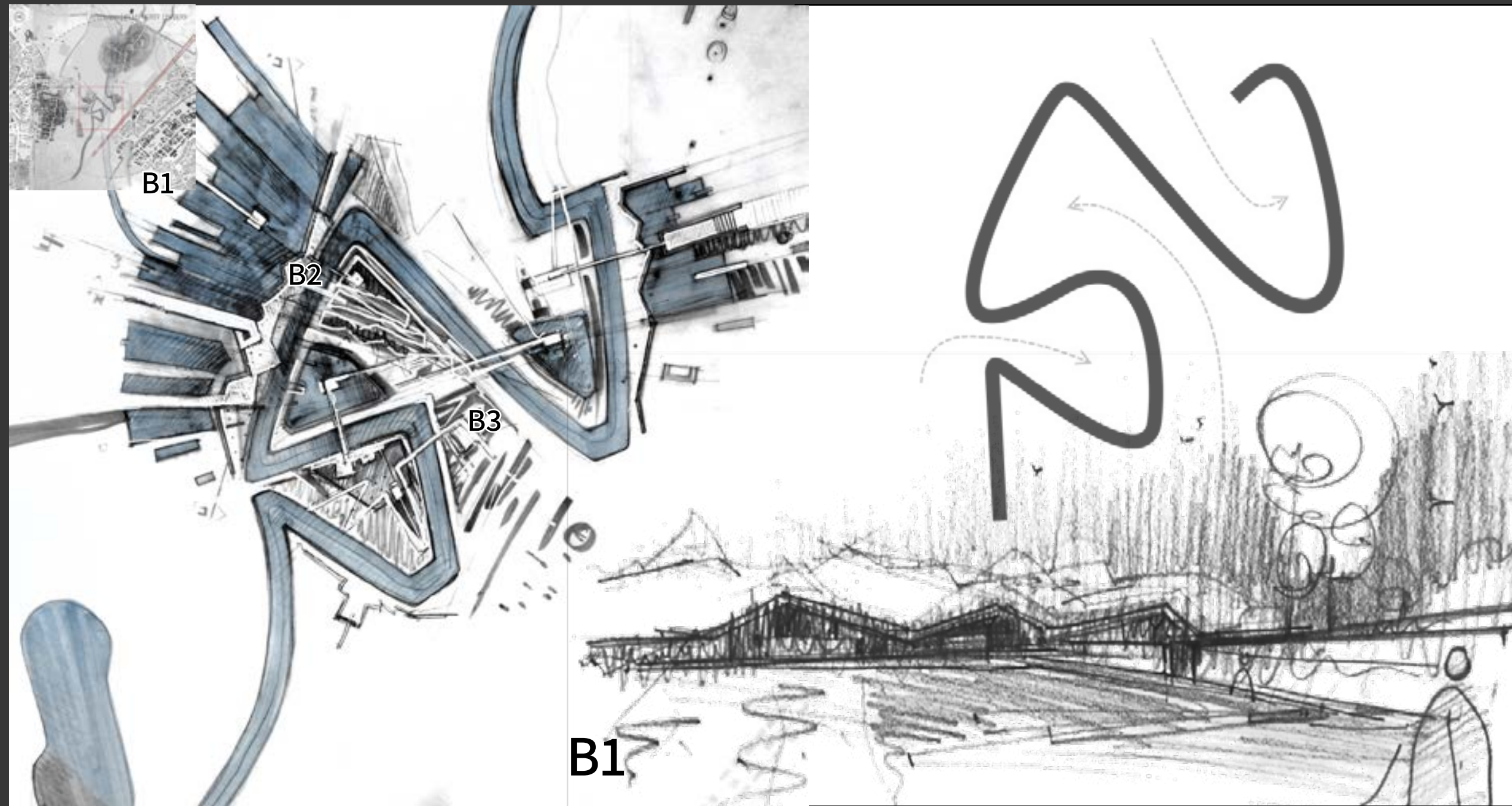
- Nature slowly seeps into the urban landscape.

A1- The mountain acts as an icon on the landscape and is relevant in the daily routine of the border dwellers.

A2- I attempted to define how the urban dweller lives on the border of the park; the perception of the nature as expressed through the feeling of living within this border world.

A3- The encounter between the person who leaves the city for the park and the stream, and then receives the same pavilion that collects its surroundings whose essence is to mediate between the earth, the water, the sky and the mountain.





B a stream (Avalon)

- The stream acts as the connecting piece between the mountain and the city. It allows the natural and living continual to continue inward while proving a new place the responds to it's flow and changes.

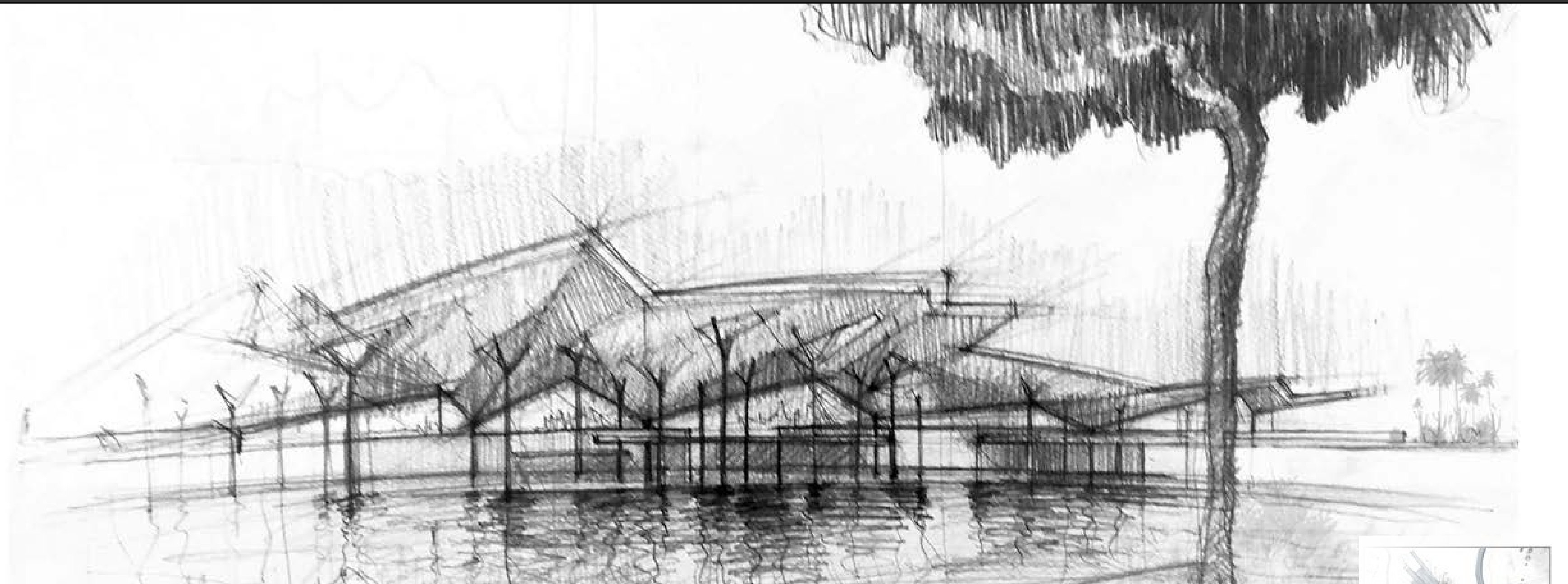
- By nature of it's twists and turns, a natural space, a pavilion is created that allows the flow of space to intertwine between.

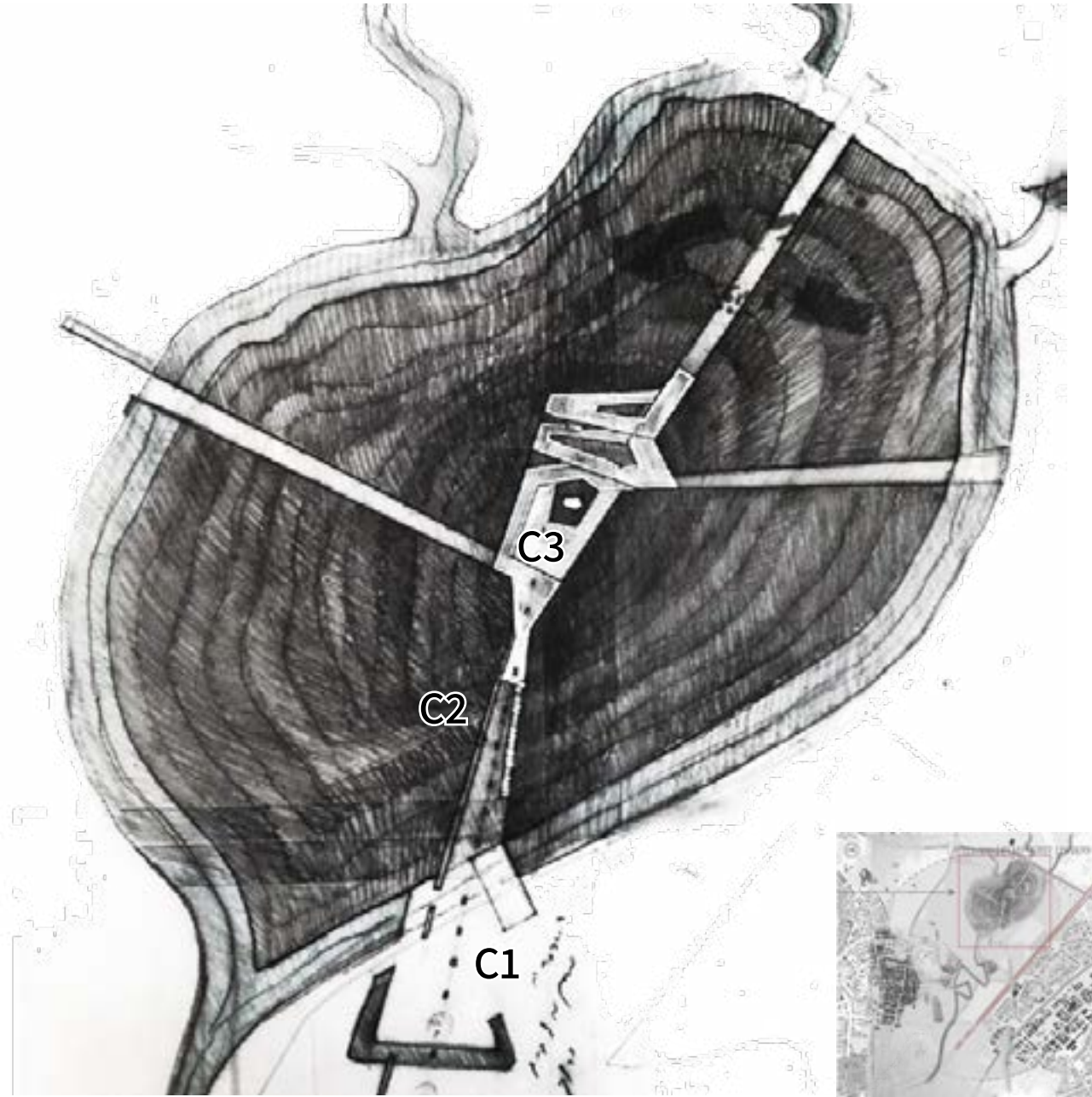
B1- The open pavilion is reached through pools for storing floodwaters.

B2- The pavilion has alternative study spaces that allow spirits to pass through them.

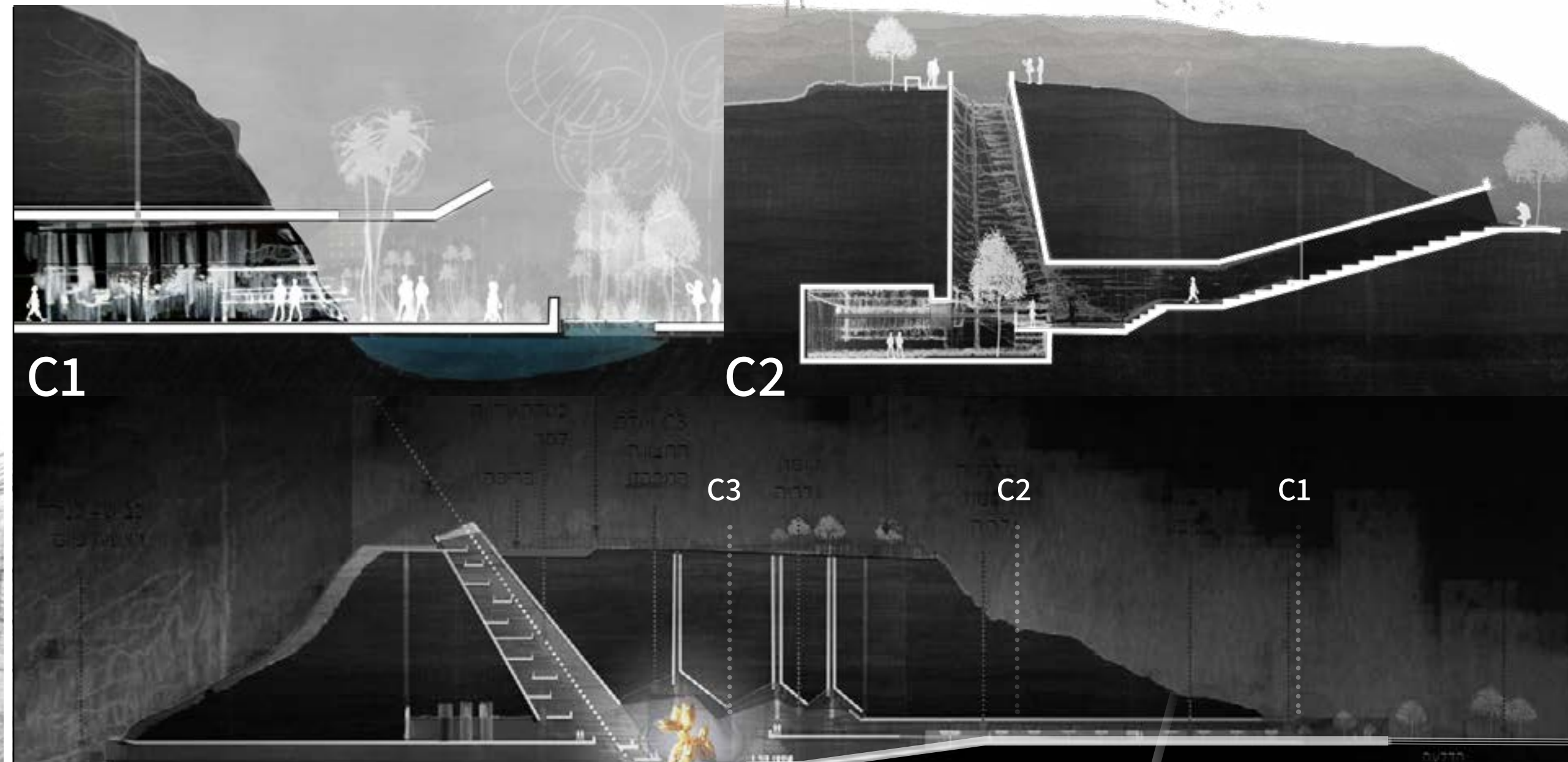
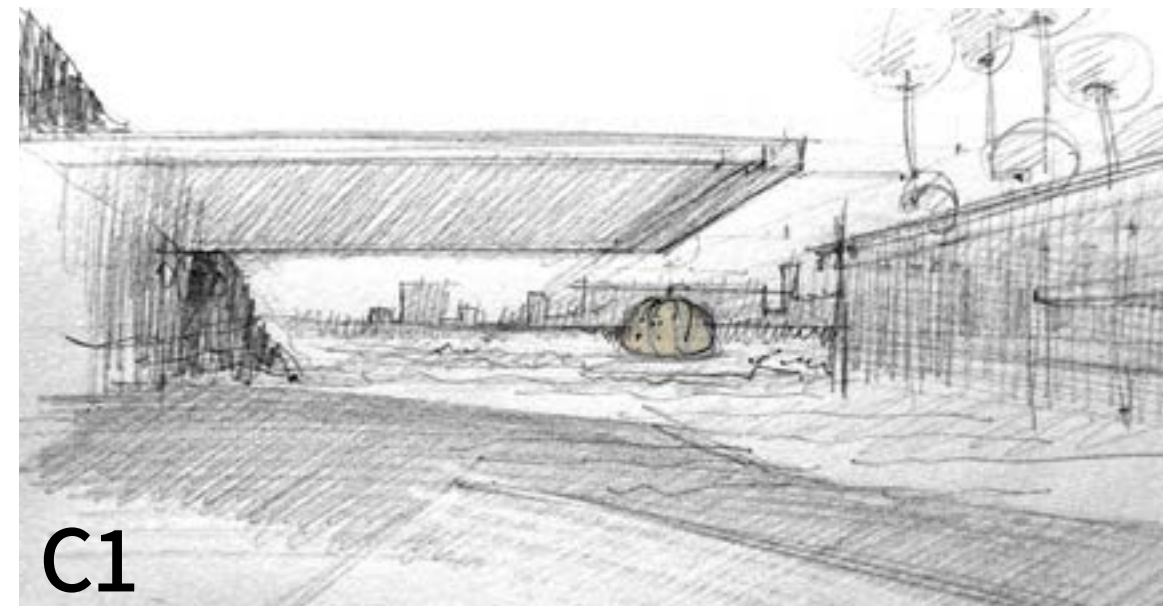
B3- From the bank of the stream, the pavilion will be revealed and some of its pillars will touch the stream in an effort to create layeredness and lightness.

B3





The planning method today distinguishes between situations. I tried to find a way to create positive interactions between things



C Hiriya, Waste mountain

- The Waste mountain Section C documents an excavation into the mountainside for an exhibition of consumer culture
- The museum on the mountain reveals the layers of time. And so he recounts the memory of Hiriya.

C1- Arrival at the entrance to the mountain frame the urban landscape and elevates the humanity scale.

C2- Natural light is hinted and reflected throughout the gallery. The light acts as a guide throughout the hidden space.

C3- In which the performance seeks to arouse thought, is this the modern golden calf of consumer culture?

